

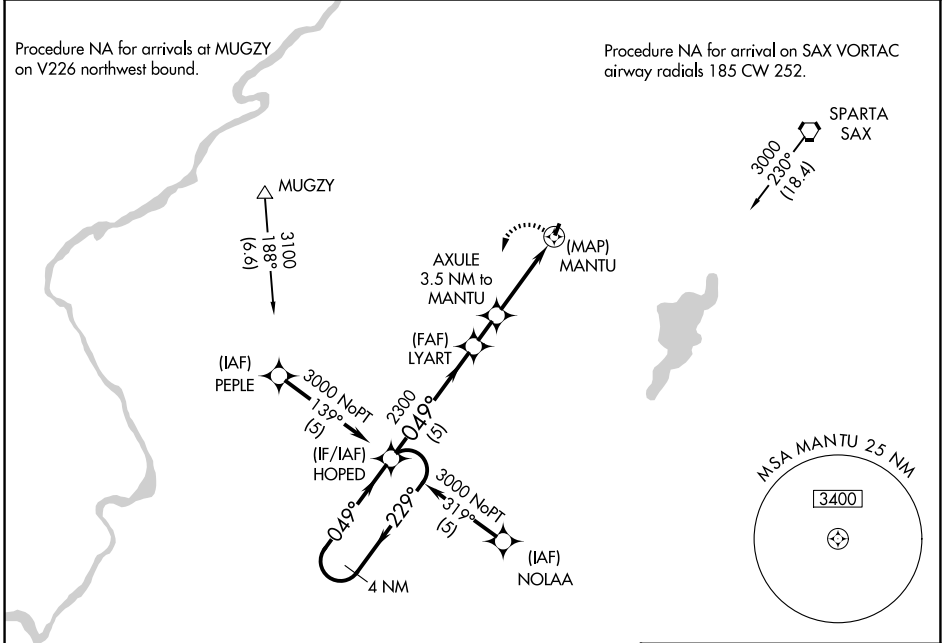
APP CRS	Rwy Ldg	1981
049°	TDZE	583
	Apt Elev	583

RNAV (GPS) RWY 3

AEROFLEX/ANDOVER (12N)

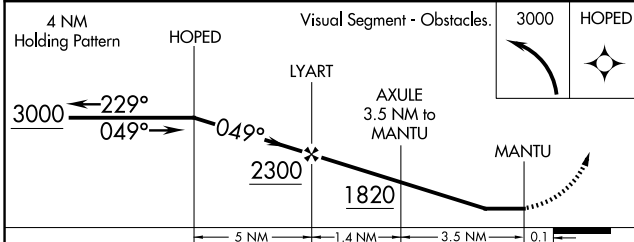
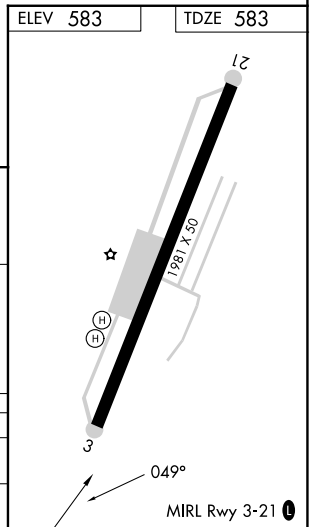
RNP APCH.	MISSED APPROACH:
<p>▼ When local altimeter setting not received, use Caldwell altimeter setting and increase all MDA 120 feet. Procedure NA at night. Rwy 3 helicopter visibility reduction below 1 SM NA.</p>	<p>Climbing left turn to 3000 direct HOPED and hold.</p>

NEWARK APP CON 123.775 379.9	UNICOM 122.8 (CTAF) 0
--	---------------------------------



NE-2, 11 JUN 2026 to 09 JUL 2026

NE-2, 11 JUN 2026 to 09 JUL 2026



CATEGORY	A	B	C	D
LNVA MDA	1340-1 757 (800-1)		NA	
CIRCLING	1560-1¼ 977 (1000-1¼)		NA	