

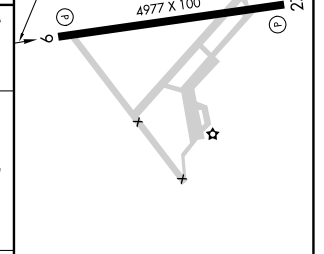
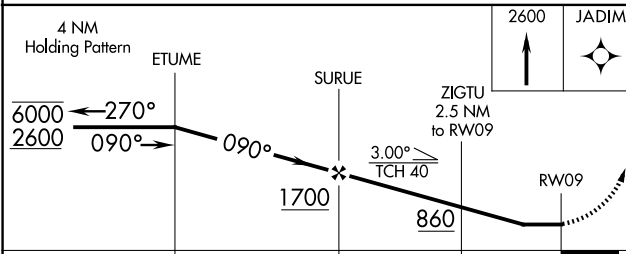
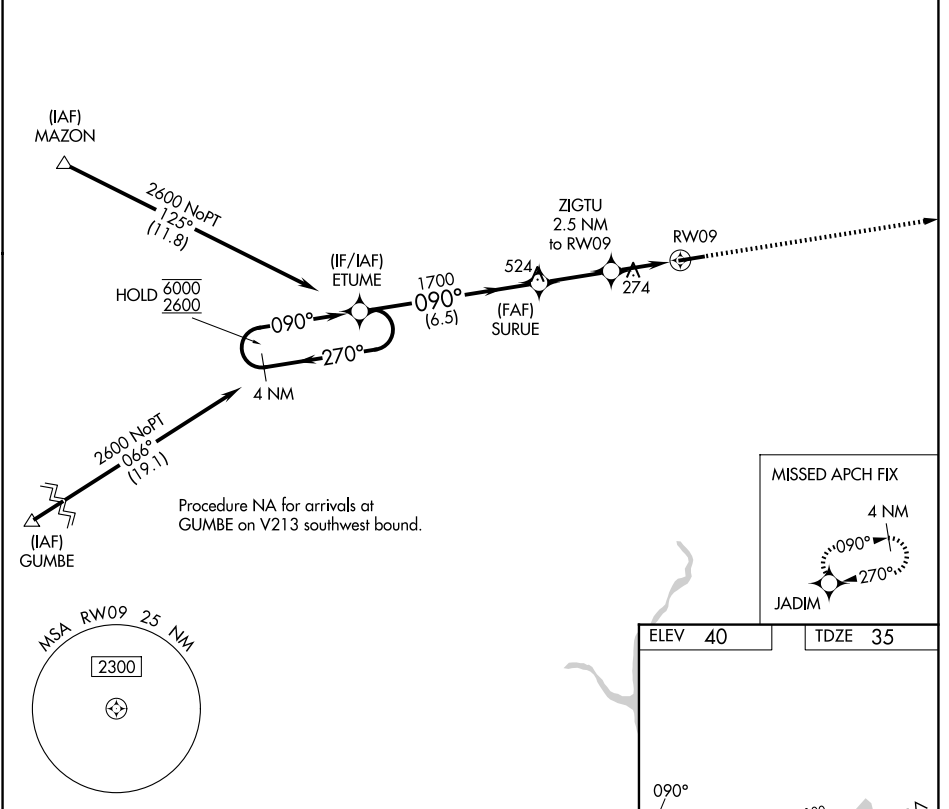
APP CRS	Rwy Ldg	4977
090°	TDZE	35
	Apt Elev	40

RNAV (GPS) RWY 9

FRANKLIN RGNL (F'KN)

RNP APCH - GPS.	MISSED APPROACH: Climb to 2600 direct JADIM and hold.
<p>Procedure NA at night. Rwy 9 helicopter visibility reduction below 1 SM NA.</p>	

AWOS-3PT 124.675	NORFOLK APP CON 127.9 269.425	UNICOM 122.8 (CTAF) 1
----------------------------	---	---------------------------------



CATEGORY	A	B	C	D
LNAV MDA	580-1	545 (600-1)	580-1 ⁵ / ₈	545 (600-1 ⁵ / ₈)

ELEV 40	TDZE 35
MIRL Rwy 9-27 1	

NE-3, 11 JUN 2026 to 09 JUL 2026

NE-3, 11 JUN 2026 to 09 JUL 2026