

WAAS CH <b>90339</b> <b>W21A</b>	APP CRS <b>213°</b>	Rwy Ldg TDZE Apt Elev	<b>3500</b> <b>170</b> <b>170</b>
--	------------------------	-----------------------------	---

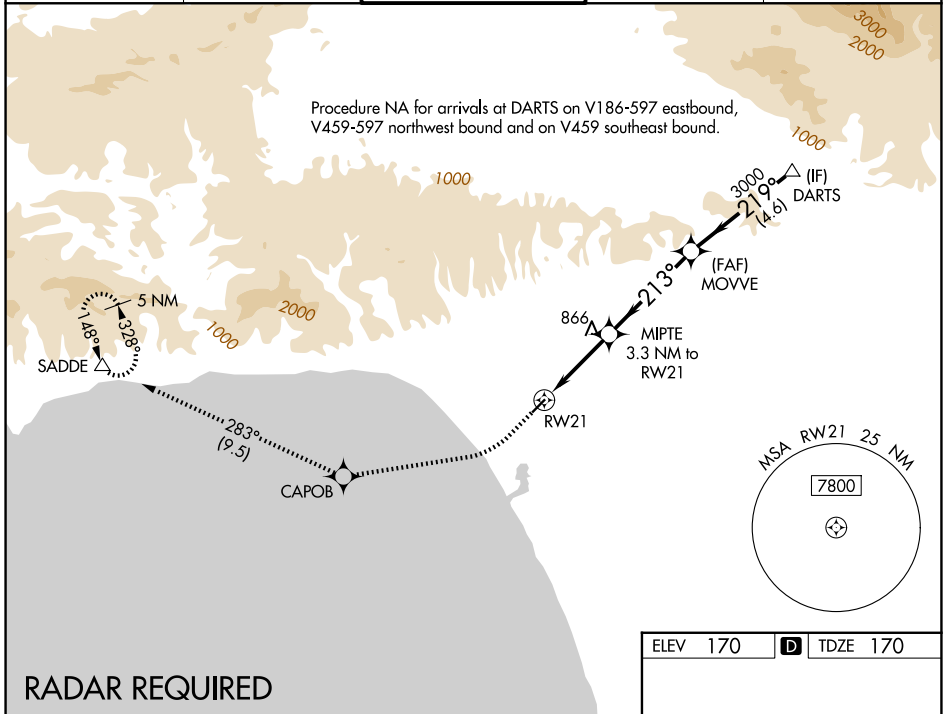
# RNAV (GPS) RWY 21

SANTA MONICA MUNI (SMO)

RNP APCH.  
 ⚠ For uncompensated Baro-VNAV systems, LNAV/VNAV NA below 5°C (41°F) or above 14°C (58°F). Rwy 21 helicopter visibility reduction below 1 SM NA.

MISSED APPROACH: Climb to 600 then climbing right turn to 5000 direct CAPOB and on track 283° to SADDE and hold, continue climb-in-hold to 5000.

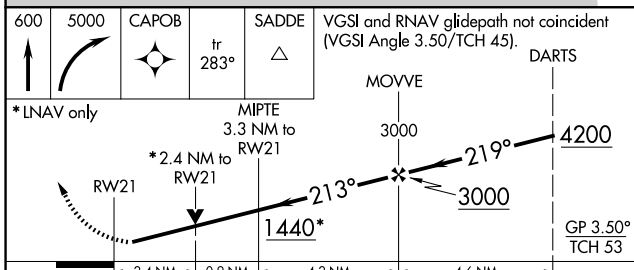
ATIS <b>119.15</b>	SOCAL APP CON <b>135.05 317.5</b>	SANTA MONICA TOWER * <b>120.1</b> (CTAF) <b>257.8</b>	GND CON <b>121.9</b>	UNICOM <b>122.95</b>
-----------------------	--------------------------------------	--	-------------------------	-------------------------



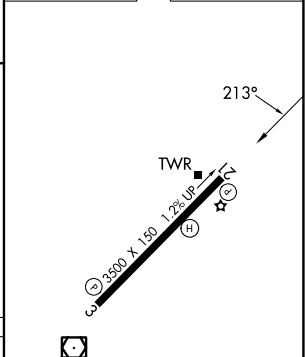
SW-3, 11 JUN 2026 to 09 JUL 2026

SW-3, 11 JUN 2026 to 09 JUL 2026

## RADAR REQUIRED



ELEV 170	<b>D</b>	TDZE 170
----------	----------	----------



CATEGORY	A	B	C	D
LPV DA		440-1	270 (300-1)	
LNAV/VNAV DA		685-1 3/8	515 (600-1 3/8)	
LNAV MDA	1120-1 1/4	950 (1000-1 1/4)	1120-2 1/2	950 (1000-2 1/2)

MIRL Rwy 3-21 **1**  
 REIL Rwy 21 **1**