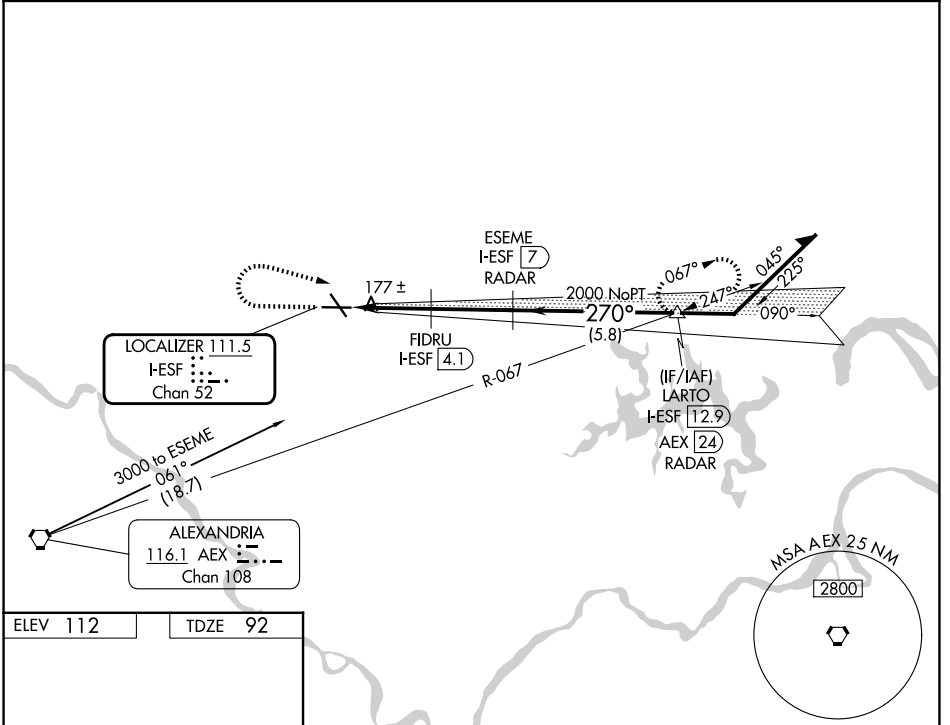


LOC I-ESF <b>111.5</b> Chan <b>52</b>	APP CRS <b>270°</b>	Rwy Ldg TDZE Apt Elev	<b>5998</b> <b>92</b> <b>112</b>
---	------------------------	-----------------------------	--

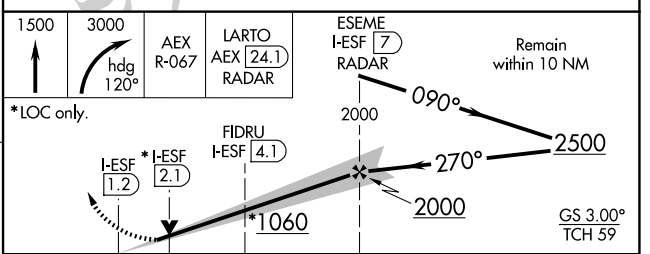
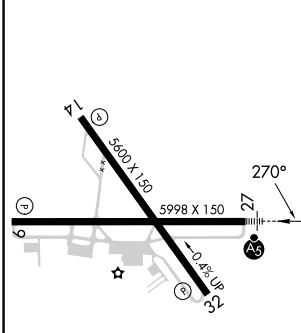
# ILS or LOC/DME RWY 27

ESLER RGNL (E/SF)

RADAR or DME required.		MALSRS	MISSED APPROACH: Climb to 1500 then climbing right turn to 3000 on heading 120° and on AEX VORTAC R-067 to LARTO/AEX 24.1 DME/RADAR and hold.
<p>⚠ Circling Rwy 14, 32 NA at night. VDP NA with Alexandria Intl altimeter setting. When local altimeter not received, use Alexandria Intl altimeter setting and increase DA to 327 feet; increase all MDA to 40 feet and Circling visibility Cat D ¼ SM. For inop MALSRS, increase S-LOC 27 Cat C/D visibility to 1 SM.</p>			
ESF ASOS <b>119.425</b>	MAKS APP CON <b>125.4 254.8</b>	UNICOM <b>122.8</b> (CTAF) <b>0</b>	



ELEV 112	TDZE 92
----------	---------



CATEGORY	A	B	C	D
S-ILS 27	292-½ 200 (200-½)			
S-LOC 27	440-½ 348 (400-½)	440-⅝ 348 (400-⅝)		
CIRCLING	600-1 488 (500-1)	740-¾ 628 (700-¾)		760-2 648 (700-2)

REIL Rws 9, 14 and 32 **0**  
MIRL Rwy 14-32 **0**  
HIRL Rwy 9-27 **0**

SC-4, 11 JUN 2026 to 09 JUL 2026

SC-4, 11 JUN 2026 to 09 JUL 2026