

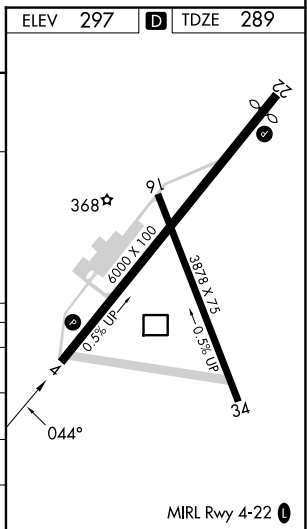
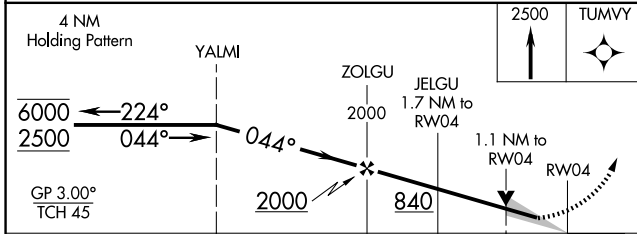
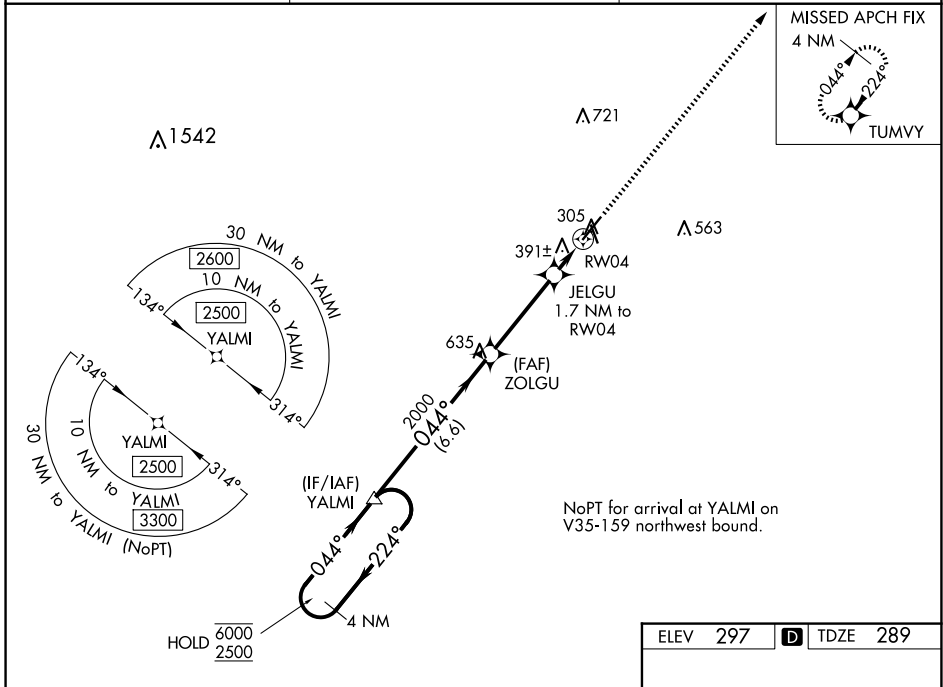
WAAS CH <b>82603</b> <b>W04A</b>	APP CRS <b>044°</b>	Rwy Idg TDZE Apt Elev	<b>6000</b> <b>289</b> <b>297</b>
--	------------------------	-----------------------------	---

# RNAV (GPS) RWY 4

MOULTRIE MUNI (MGR)

RNP APCH - GPS.		MISSED APPROACH: Climb to 2500 direct TUMVY and hold.
<p><b>▽</b> Circling Rwy 16, 34 NA at night. For uncompensated Baro-VNAV systems, LNAV/VNAV NA below -15°C or above 54°C.</p>		

AWOS-3PT <b>118.925</b>	VALDOSTA APP CON ★ <b>126.6 285.6</b>	UNICOM <b>122.8</b> (CTAF) <b>📻</b>
----------------------------	--	--



CATEGORY	A	B	C	D
LPV DA		539-1	250 (300-1)	
LNAV/VNAV DA		552-1	263 (300-1)	
LNAV MDA		660-1	371 (400-1)	
<b>C</b> CIRCLING	720-1 423 (500-1)	760-1 463 (500-1)	860-1½ 563 (600-1½)	1080-2½ 783 (800-2½)

SE-4, 11 JUN 2026 to 09 JUL 2026

SE-4, 11 JUN 2026 to 09 JUL 2026