

LOC I-ANB <b>111.5</b>	APP CRS <b>052°</b>	Rwy Ldg TDZE Apt Elev	<b>7002</b> <b>595</b> <b>612</b>
---------------------------	------------------------	-----------------------------	---

# ILS Y or LOC Y RWY 5

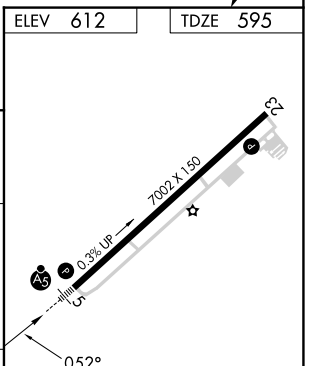
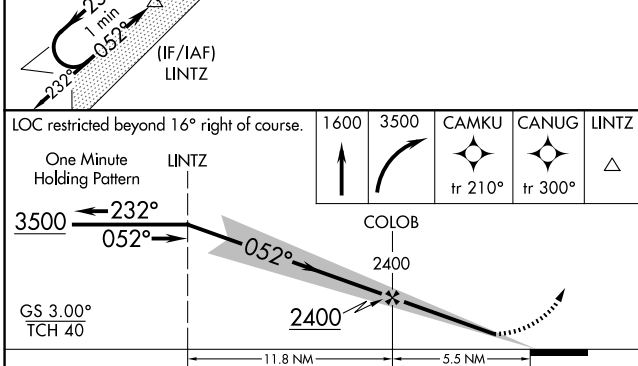
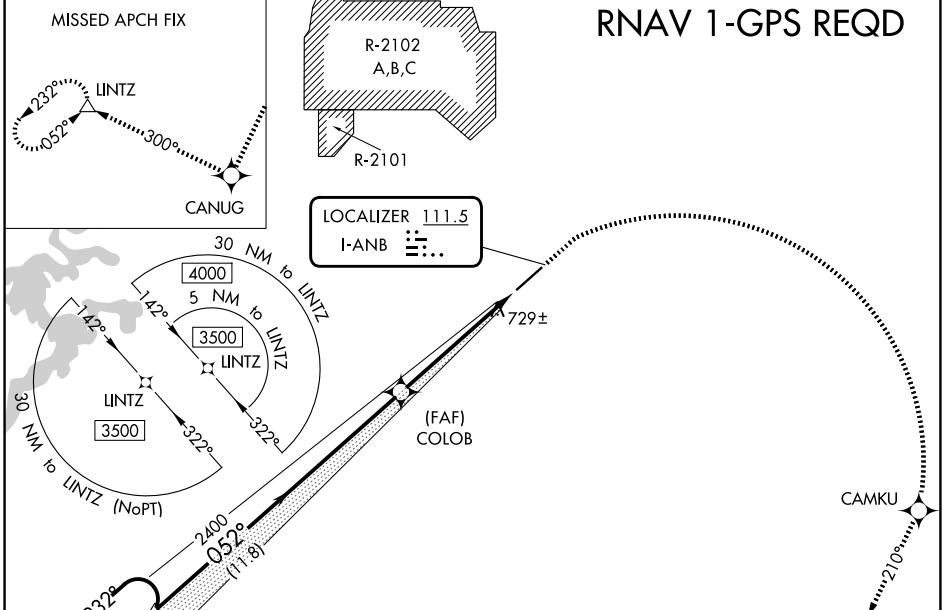
ANNISTON RGNL (ANB)

**⚠** Circling NA north of Rwy 5-23. RNAV 1-GPS required. For inop ALS, increase S-ILS 5 all Cats visibility to 1 SM. When local altimeter setting not received, use Gadsden altimeter setting: increase DA to 975 and all visibilities ¼ SM; increase all MDAs 80 feet, and S-LOC 5 Cat C/D, and Circling Cat C visibilities ½ SM. For inop ALS when using Gadsden altimeter setting: increase S-ILS 5 all Cats to 1 ¼ SM.

MALSR

MISSED APPROACH: Climb to 1600 then climbing right turn to 3500 direct CAMKU then on track 300° to CANUG and on track 300° to LINTZ and hold.

AWOS-3 <b>119.675</b>	BIRMINGHAM APP CON <b>132.15 285.45</b>	CTAF <b>123.6</b>	UNICOM <b>123.0</b>
--------------------------	--	----------------------	------------------------



CATEGORY	A	B	C	D
S-ILS 5	909-½		314 (300-½)	
S-LOC 5	1120-½ 525 (600-½)		1120-1 525 (600-1)	
CIRCLING	1420-1 808 (900-1)		1420-2¼ 808 (900-2¼) 1820-3 1208 (1300-3)	

FAF to MAP 5.5 NM					
Knots	60	90	120	150	180
Min:Sec	5:30	3:40	2:45	2:12	1:50

REIL Rwy 23  
HIRL Rwy 5-23

SE-4, 11 JUN 2026 to 09 JUL 2026

SE-4, 11 JUN 2026 to 09 JUL 2026