

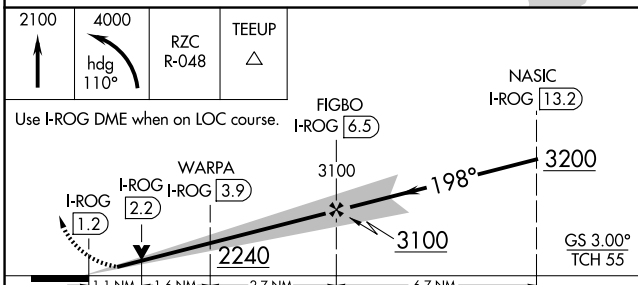
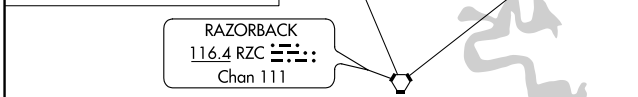
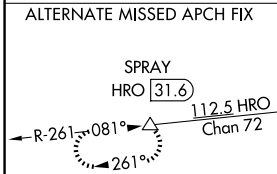
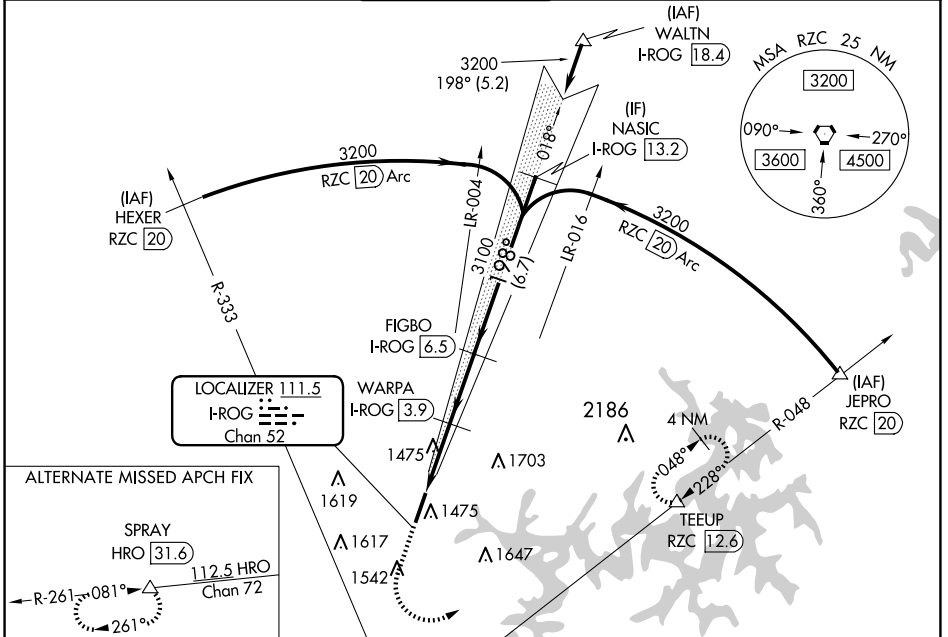
LOC/DME I-ROG <b>111.5</b> Chan 52	APP CRS <b>198°</b>	Rwy Idg <b>6011</b> TDZE <b>1354</b> Apt Elev <b>1359</b>
--	------------------------	---

# ILS or LOC RWY 20

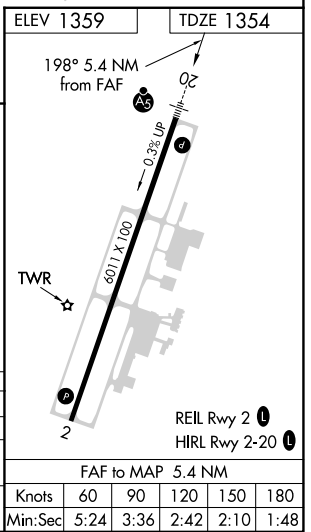
ROGERS EXEC - CARTER FLD (ROG)

DME required.	MALSR	MISSED APPROACH: Climb to 2100 then climbing left turn to 4000 on heading 110° and RZC VORTAC R-048 to TEEUP/RZC VORTAC 12.6 DME and hold.
Autopilot coupled approach NA below 1632.		

AWOS-3PT <b>134.375</b>	RAZORBACK APP CON * <b>126.6 305.2</b>	ROGERS TOWER * <b>119.375</b> (CTAF)	GND CON <b>118.0</b>	CLNC DEL <b>121.75</b>	CLNC DEL <b>121.75</b> (When twr closed)
----------------------------	---	---	-------------------------	---------------------------	--



CATEGORY	A	B	C	D
S-ILS 20	1554-1/2 200 (200-1/2)			
S-LOC 20	1740-1/2 386 (400-1/2)		1740-5/8 386 (400-5/8)	
CIRCLING	1840-1 481 (500-1)		2020-1 3/4 661 (700-1 3/4)    2020-2 661 (700-2)	



Knots	60	90	120	150	180
Min:Sec	5:24	3:36	2:42	2:10	1:48

SC-1, 11 JUN 2026 to 09 JUL 2026

SC-1, 11 JUN 2026 to 09 JUL 2026