

LOC/DME I-FOK 111.7 Chan 54	APP CRS 236°	Rwy Ldg TDZE 66 Apt Elev 66	9002
---	------------------------	---	-------------

ILS or LOC RWY 24

FRANCIS S GABRESKI (F)OK

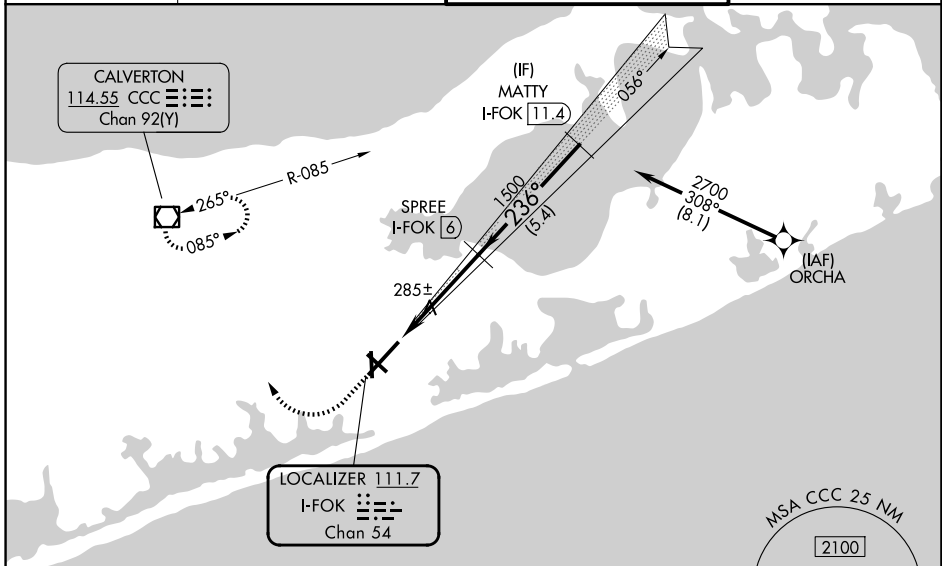
RNP APCH - GPS. From ORCHA.
DME required for LOC only.

▼ Rwy 24 helicopter visibility reduction below ¼ SM NA. Circling Rwy 15, 19 NA at night. VDP NA when using HWV altimeter setting. For inop ALS, increase S-ILS 24 all Cats visibility to ¾ SM and S-LOC 24 Cat A/B visibility to 1 SM and Cat C/D visibility to 1¾ SM. When local altimeter setting not received, use HWV altimeter setting and increase S-ILS 24 DA to 374 feet; increase all MDAs 40 feet and Circling visibility Cat C/D ¼ SM.



MISSED APPROACH: Climb to 880 then climbing right turn to 2000 direct CCC VOR/DME and hold.

ASOS 119.925	NEW YORK APP CON 125.975 343.65	SUFFOLK TOWER★ 125.3 (CTAF) 0 236.6	GND CON 121.8 225.4
------------------------	---	---	-------------------------------



ELEV 66	TDZE 66
---------	---------

Diagram details: 236° heading. 880 ft MDA. 2000 ft climb. 2700 ft final approach. 1500 ft intermediate. 1500 ft decision height. 1500 ft MDA. 1500 ft TCH. 60 ft GS. 3.00° TCH.

880	2000	CCC	VGSI and ILS glidepath not coincident (VGSI Angle 3.00/TCH 77).
-----	------	-----	---

Diagram details: 236° heading. 1.2 NM, 3.1 NM, 5.4 NM segments. 1500 ft MDA. 1500 ft TCH. 60 ft GS. 3.00° TCH.

HIRL Rwy 6-24 (L)					
MIRL Rwy 15-33 (L)					
REIL Rwys 6, 15, and 33 (L)					
FAF to MAP 4.3 NM					
Knots	60	90	120	150	180
Min:Sec	4:18	2:52	2:09	1:43	1:26

CATEGORY	A	B	C	D
S-ILS 24	344-¾		278 (300-¾)	
S-LOC 24	540-¾	474 (500-¾)	540-1	474 (500-1)
CIRCLING	600-1 534 (600-1)	620-1 554 (600-1)	700-1¾ 634 (700-1¾)	740-2¼ 674 (700-2¼)

NE-2, 11 JUN 2026 to 09 JUL 2026

NE-2, 11 JUN 2026 to 09 JUL 2026