

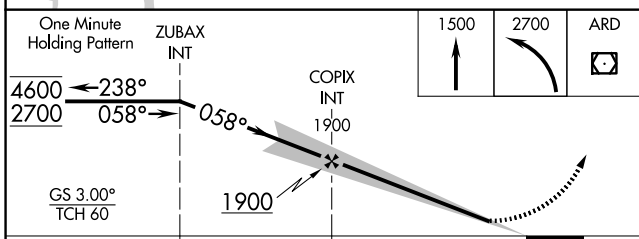
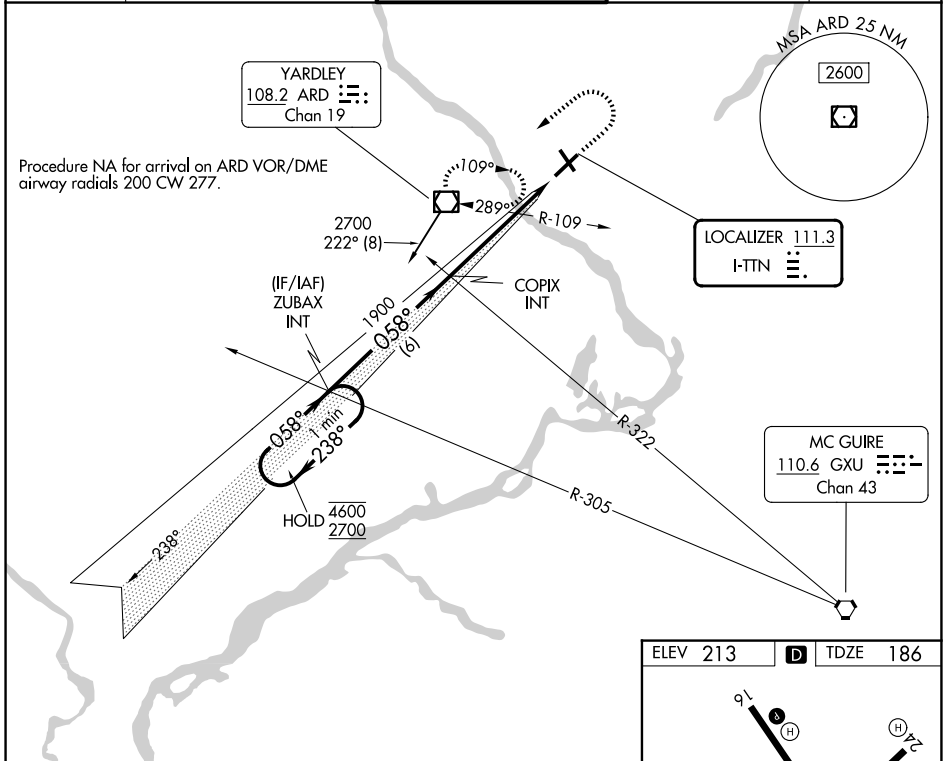
LOC I-TTN 111.3	APP CRS 058°	Rwy Idg 6006
		TDZE 186
		Apt Elev 213

ILS or LOC RWY 6

TRENTON MERCER (TTN)

<p>⚠ When Circling to Rwy 34 at night, operational VGSI required, remain on or above VGSI glidepath until threshold. For inop ALS, increase S-LOC 6 Cat C/D visibility to 1½ SM.</p>	<p>MALSR</p>	<p>MISSED APPROACH: Climb to 1500 then climbing left turn to 2700 direct ARD VOR/DME and hold, continue climb-in-hold to 2700.</p>
---	--------------	--

ATIS 126.775	PHILADELPHIA APP CON 123.8 291.7	TRENTON TOWER ★ 120.7 (CTAF) 0 257.8	GND CON 121.9 257.8	UNICOM 122.95
------------------------	--	--	-------------------------------	-------------------------



ELEV 213	D	TDZE 186
----------	---	----------

1500 2700 ARD

TWR

4600 T 150

6036 T 150

0.5% UP

0.8% UP 54

058°

HIRL Rwy 6-24 and 16-34

REIL Rwy 16, 24 and 34

FAF to MAP 5.3 NM

Knots	60	90	120	150	180
Min:Sec	5:18	3:32	2:39	2:07	1:46

NE-2, 11 JUN 2026 to 09 JUL 2026

NE-2, 11 JUN 2026 to 09 JUL 2026