


LOC I-GNV 111.3	APP CRS 286°	Rwy Ldg TDZE 122 Apt Elev 151
---------------------------	------------------------	---

ILS or LOC RWY 29

GAINESVILLE RGNL (GNV)

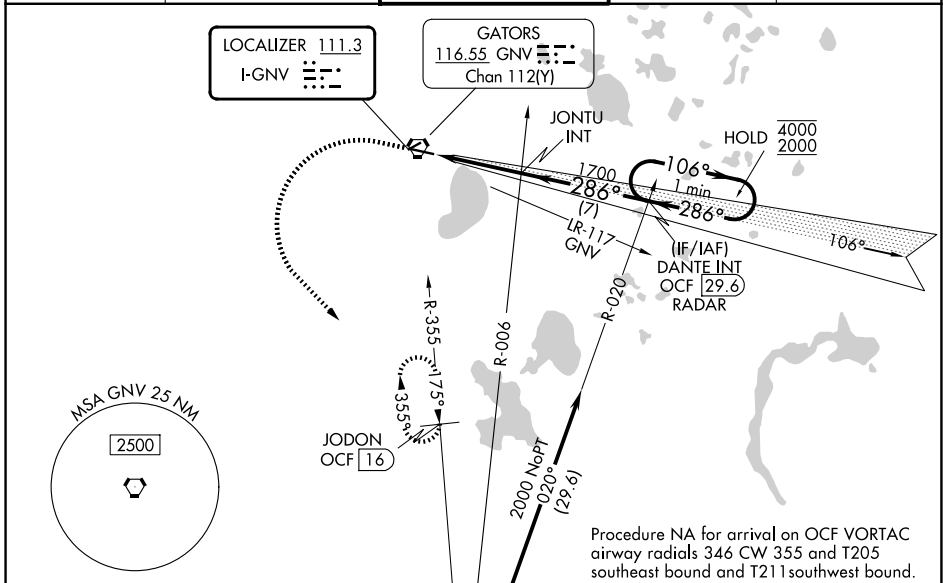
DME required. RADAR required for procedure entry at DANTE.

⚠ When local altimeter setting not received, use OCF altimeter setting and increase S-ILS 29 DA to 403 feet; increase all MDAs 100 feet and S-LOC 29 visibility Cat C/D to RVR 6000, and Circling visibility Cat C/D ½ SM. For inop ALS when using OCF altimeter setting, increase S-ILS 29 all Cats visibility to RVR 4500. * RVR 1800 authorized with use of FD or AP or HUD to DA (NA when using OCF altimeter setting.)

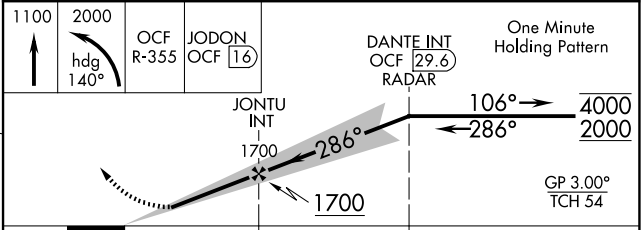
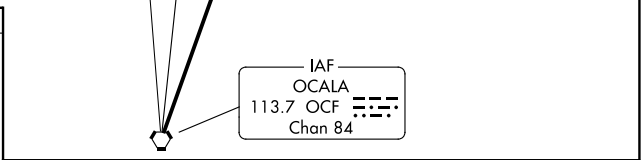
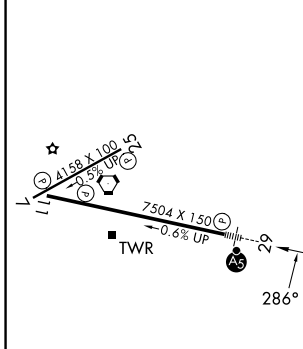
MALSR 

MISSED APPROACH: Climb to 1100 then climbing left turn to 2000 on heading 140° and OCF VORTAC R-355 to JODON/OCF 16 DME and hold.

ATIS 127.15	JACKSONVILLE APP CON 118.175 338.25	GAINESVILLE TOWER★ 119.55 (CTAF) 0 353.7	GND CON 121.7	UNICOM 122.95
-----------------------	---	--	-------------------------	-------------------------



ELEV 151	TDZE 122
----------	----------



REIL Rwy 11	MIRL Rwy 7-25	HIRL Rwy 11-29				
FAF to MAP 4.8 NM						
Knots	60	90	120	150	180	
Min:Sec	4:48	3:12	2:24	1:55	1:36	
CATEGORY	A		B		C	D
S-ILS 29 *	322/24		200 (200-½)			
S-LOC 29	580/24	458 (500-½)	580/45		458 (500-¾)	
CIRCLING	620-1 469 (500-1)	700-1 549 (600-1)	760-1¾ 609 (700-1¾)	820-2 669 (700-2)		

SE-3, 11 JUN 2026 to 09 JUL 2026

SE-3, 11 JUN 2026 to 09 JUL 2026