

WAAS CH <b>93729</b> <b>W05A</b>	APP CRS <b>052°</b>	Rwy Ldg TDZE Apt Elev	<b>3994</b> <b>771</b> <b>790</b>
--	------------------------	-----------------------------	---

# RNAV (GPS) RWY 5

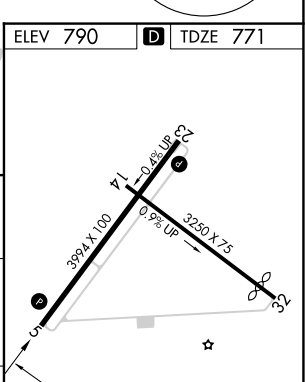
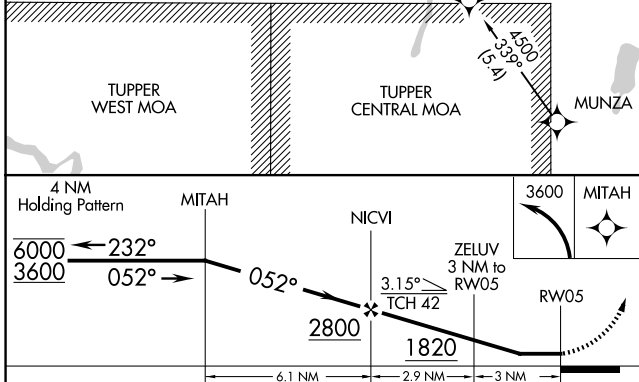
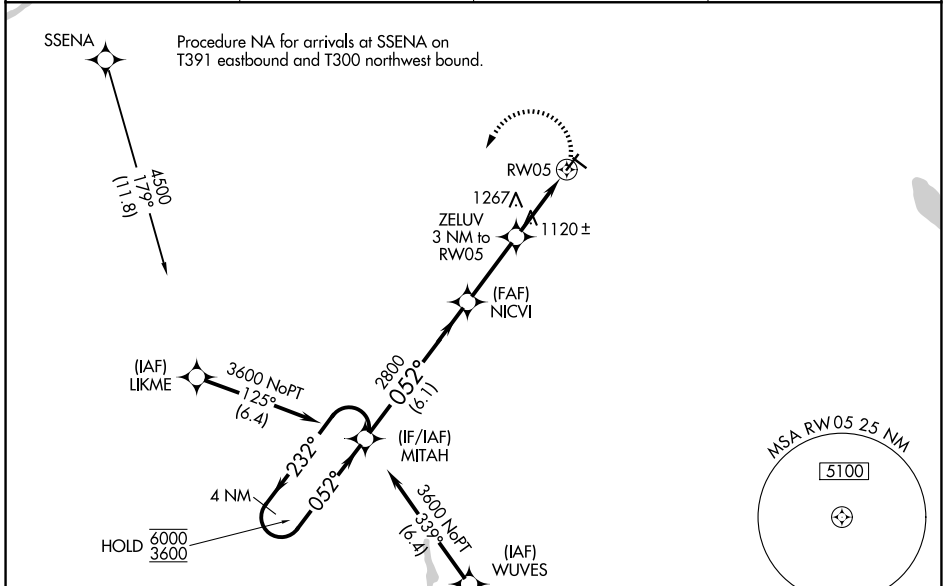
MALONE-DUFORT (MAL)

RNP APCH.

**NA** Rwy 5 helicopter visibility reduction below 1 SM NA. Use Massena Intl-Richards fld altimeter setting; when not received, use Adirondack Rgnl altimeter setting and increase all MDA 60 feet and increase LP Cat C visibility 1/2 SM and Circling Cat A and C visibility 1/2 SM. Straight-in and Circling Rwy 5 NA at night.

MISSED APPROACH:  
Climbing left turn to 3600 direct MITAH and hold.

AWOS-AV <b>122.8</b>	MSS ASOS <b>128.075</b>	BOSTON CENTER <b>135.25 377.1</b>	UNICOM <b>122.8 (CTAF)</b>
-------------------------	----------------------------	--------------------------------------	-------------------------------



CATEGORY	A	B	C	D
LP MDA	1520-1 749 (800-1)	1520-1 1/4 749 (800-1 1/4)	1520-2 749 (800-2)	NA
LNVA MDA	1580-1 809 (800-1)	1580-1 1/4 809 (800-1 1/4)	1580-2 1/2 809 (800-2 1/2)	NA
CIRCLING	1580-1 790 (800-1)	1580-1 1/4 790 (800-1 1/4)	1720-2 3/4 930 (1000-2 3/4)	NA

REIL Rwy 5 and 23  
MIRL Rwy 5-23 and 14-32

NE-2, 11 JUN 2026 to 09 JUL 2026

NE-2, 11 JUN 2026 to 09 JUL 2026