

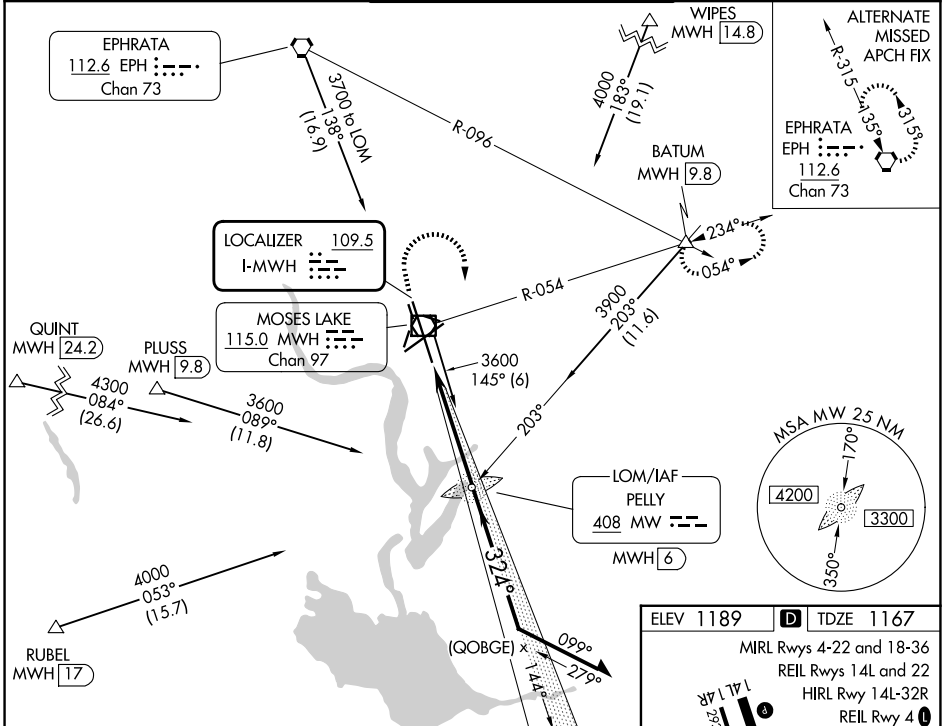
LOC I-MWH 109.5	APP CRS 324°	Rwy Ldg 13492 TDZE 1167 Apt Elev 1189
---------------------------	------------------------	--

ILS or LOC RWY 32R

GRANT COUNTY INTL (MWH)

ADF or DME required. ⚠ Circling Rwy 9, 27, 18, 36 NA at night. VDP NA when using EPH altimeter setting. When local altimeter setting not received, use EPH altimeter setting and increase S-ILS DA to 1403 feet; increase all MDAs 40 feet and S-LOC visibility Cats C/D ½ SM, and Circling Cat D visibility ¼ SM.	MALSR 	MISSED APPROACH: Climb to 1800 then climbing right turn to 4000 on MWH R-054 to BATUM INT/MWH VOR/DME 9.8 DME and hold, continue climb-in-hold to 4000.
---	-----------	---

ATIS 119.05	GRANT COUNTY APP CON * 126.4 379.95	GRANT COUNTY TOWER * 118.25 (CTAF) 257.8 (E) 128.0 257.8 (W)	GND CON 121.9	UNICOM 122.95
-----------------------	---	--	-------------------------	-------------------------



ELEV 1189	D	TDZE 1167			
MIRL Rwys 4-22 and 18-36 REIL Rwys 14L and 22 HIRL Rwy 14L-32R REIL Rwy 4					
FAF to MAP 4.7 NM					
Knots	60	90	120	150	180
Min:Sec	4:42	3:08	2:21	1:53	1:34

1800	4000	BATUM	MW LOM Pelly MWH 6	VGSI and ILS glidepath not coincident (VGSI Angle 3.00/TCH 76). Remain within 10 NM
↑	MWH R-054	△	2727	144°
			2800	324°
			3300	090°
			GS 3.00°	TCH 55
CATEGORY	A	B	C	D
S-ILS 32R		1367-½	200 (200-½)	
S-LOC 32R	1620-½	453 (500-½)	1620-⅞	453 (500-⅞)
CIRCLING	1680-1	491 (500-1)	1720-1½	1840-2
			531 (600-1½)	651 (700-2)

NW-1, 11 JUN 2026 to 09 JUL 2026

NW-1, 11 JUN 2026 to 09 JUL 2026