

LOC/DME I-PHF 110.1 Chan 38	APP CRS 067°	Rwy Ldg 8003 TDZE 40 Apt Elev 42
--	------------------------	---

ILS or LOC RWY 7

NEWPORT NEWS/WILLIAMSBURG INTL (PHF)

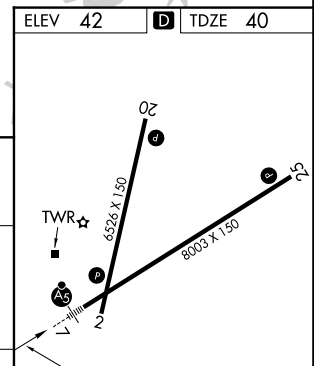
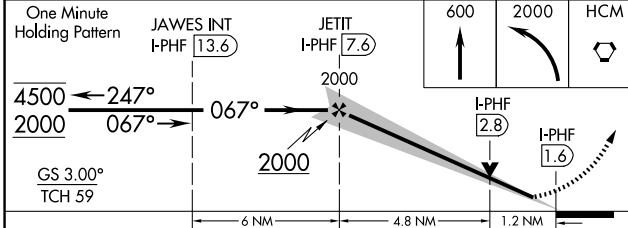
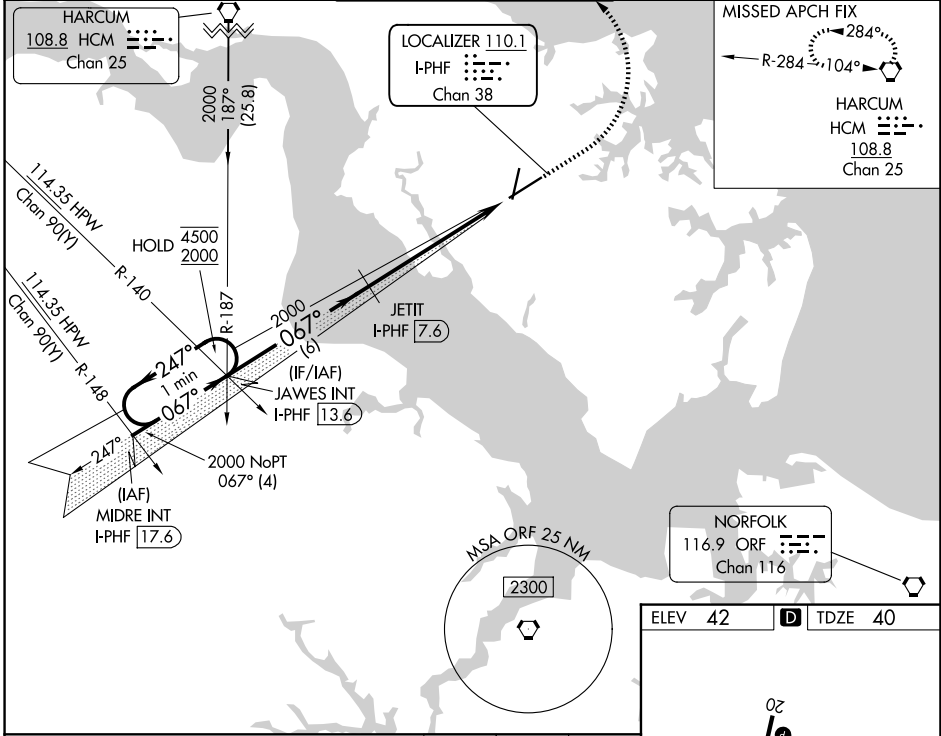
DME required.

⚠ VDP NA when using ORF altimeter setting. When local altimeter setting not received, use ORF altimeter setting and increase S-ILS 07 DA to 288 feet; increase all MDAs 60 feet and S-LOC 07 visibility Cat C/D to RVR 5000 and Circling visibility Cat C/D ¼ SM. RADAR required for procedure entry at MIDRE.
* RVR 1800 authorized with use of FD or AP or HUD to DA.



MISSED APPROACH:
Climb to 600 then climbing left turn to 2000 direct HCM VORTAC and hold.

ATIS 128.65	NORFOLK APP CON 125.7 335.625	NEWPORT NEWS TOWER* 118.7 (CTAF) 257.9 348.6	GND CON 121.9 348.6	UNICOM 122.95
-----------------------	---	--	-------------------------------	-------------------------



CATEGORY	A	B	C	D
S-ILS 7*	240/24		200 (200-½)	
S-LOC 7	480/24	440 (500-½)	480/40	440 (500-¾)
CIRCLING	520-1 478 (500-1)	540-1 498 (500-1)	760-2 718 (800-2)	780-2¼ 738 (800-2¼)

REIL Rwy 20 and 25

HIRL Rwy 2-20 and 7-25

NE-3, 11 JUN 2026 to 09 JUL 2026

NE-3, 11 JUN 2026 to 09 JUL 2026