

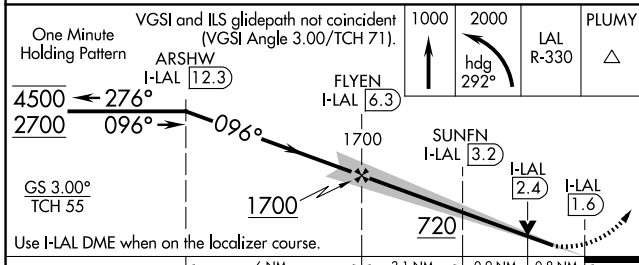
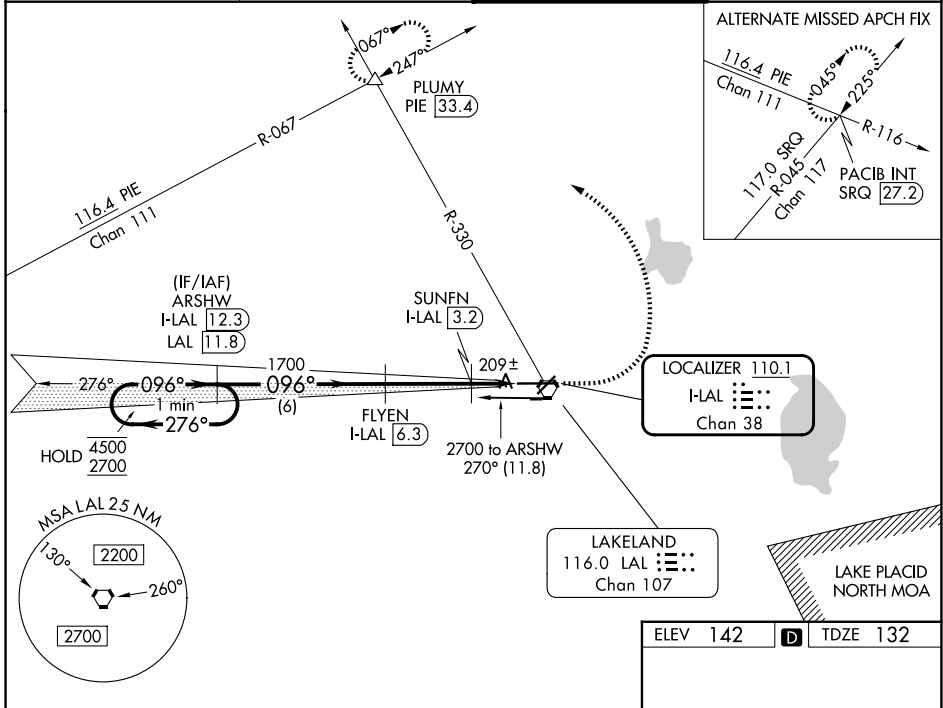
LOC/DME I-LAL 110.1 Chan 38	APP CRS 096°	Rwy Ldg TDZE 132 Apt Elev 142	8500
-------------------------------------------------	------------------------	---------------------------------------------------	-------------

ILS or LOC RWY 10

LAKELAND LINDER INTL (LAL)

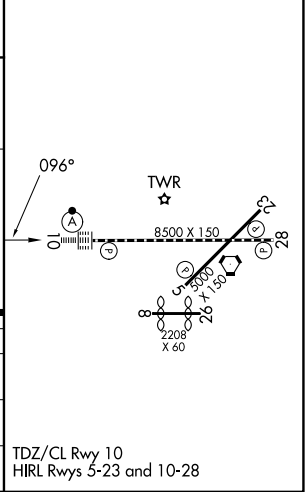
DME required.		ALSIF-2	MISSED APPROACH: Climb to 1000 then climbing left turn to 2000 on heading 292° and on LAL VORTAC R-330 to PLUMY INT/PIE 33.4 DME and hold.

ATIS 118.025	TAMPA APP CON 120.65 290.3	LAKELAND TOWER 124.5 236.775	GND CON 121.4
------------------------	--------------------------------------	----------------------------------------	-------------------------



ELEV 142	D TDZE 132
----------	-------------------

CATEGORY	A	B	C	D
S-ILS 10		332/18	200 (200-1/2)	
S-LOC 10		460/24	328 (400-1/2)	
CIRCLING	600-1 458 (500-1)	660-1 518 (600-1)	720-1 1/2 578 (600-1 1/2)	840-2 1/4 698 (700-2 1/4)



SE-3, 11 JUN 2026 to 09 JUL 2026

SE-3, 11 JUN 2026 to 09 JUL 2026