

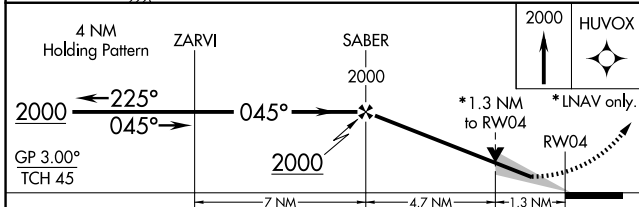
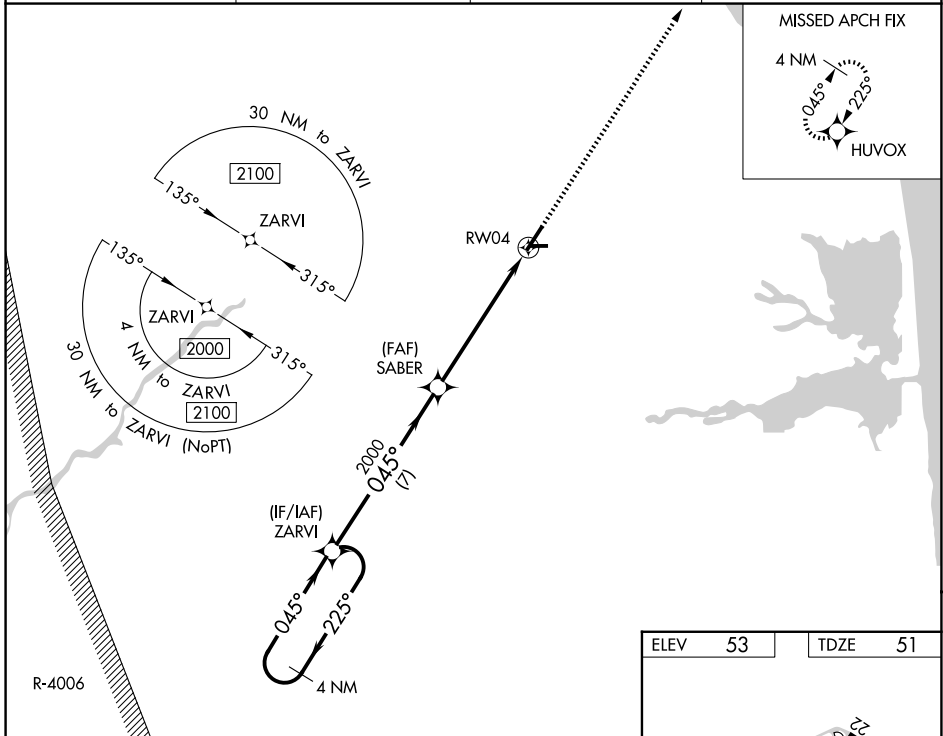
WAAS CH <b>65621</b> <b>W04A</b>	APP CRS <b>045°</b>	Rwy Ldg <b>5130</b> TDZE <b>51</b> Apt Elev <b>53</b>
--	------------------------	---

# RNAV (GPS) RWY 4

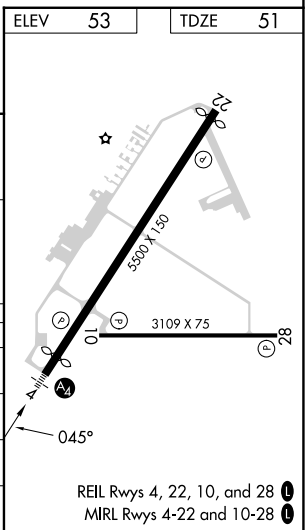
DELAWARE COASTAL (GED)

RNP APCH - GPS.	MALS	MISSED APPROACH: Climb to 2000 direct HUVOX and hold.
<p>▼ Rwy 4 helicopter visibility reduction below 3/4 SM NA. For uncompensated Baro-VNAV systems, LNAV/VNAV NA below -13°C or above 54°C. For inop ALS, increase LNAV/VNAV all Cats and LNAV Cats C/D visibility 1/4 mile.</p>		

ASOS <b>118.375</b>	DOVER APP CON <b>132.425 257.875</b>	GCO <b>125.55</b>	UNICOM <b>123.0 (CTAF)</b>
------------------------	---	----------------------	-------------------------------



CATEGORY	A	B	C	D
LPV DA		355-3/4	304 (400-3/4)	
LNAV/VNAV DA		503-1 1/4	452 (500-1 1/4)	
LNAV MDA	520-3/4	469 (500-3/4)	520-1 1/8	469 (500-1 1/8)
CIRCLING	560-1 507 (600-1)	580-1 527 (600-1)	720-1 3/4 667 (700-1 3/4)	720-2 667 (700-2)



NE-3, 11 JUN 2026 to 09 JUL 2026

NE-3, 11 JUN 2026 to 09 JUL 2026