

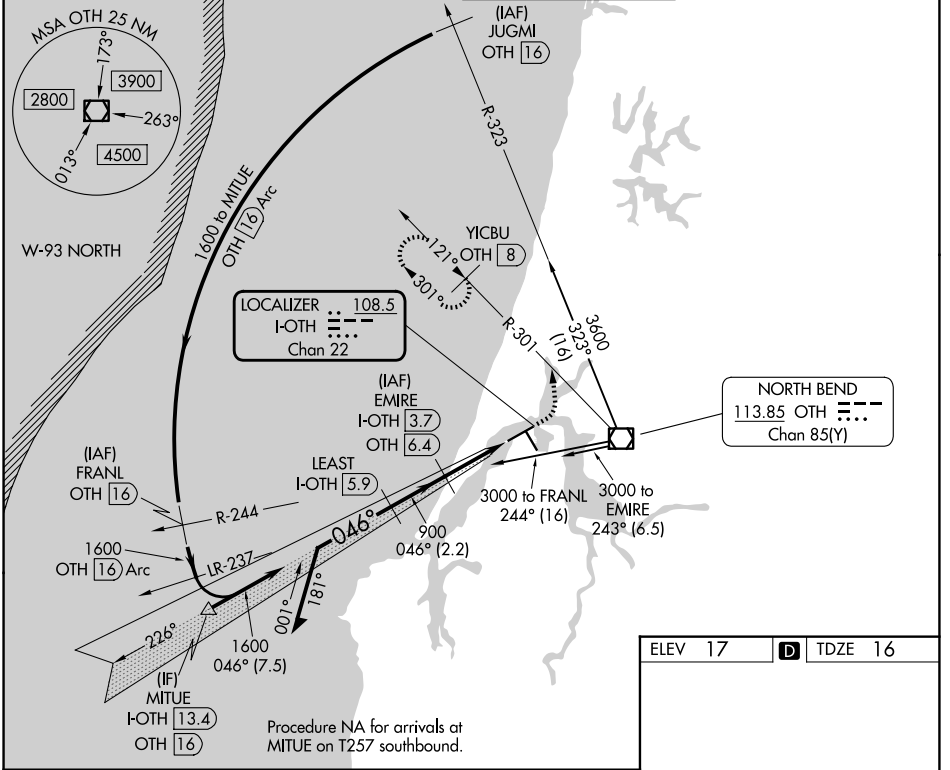
LOC/DME I-OTH 108.5 Chan 22	APP CRS 046°	Rwy Ldg TDZE Apt Elev	5320 16 17
--	------------------------	-----------------------------	---------------------------------------

COPTER ILS Y or LOC Y RWY 5

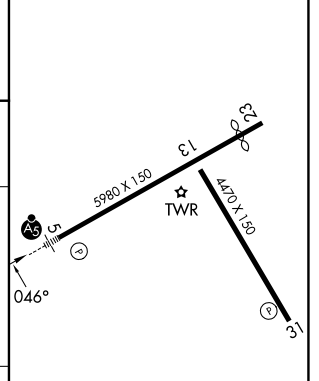
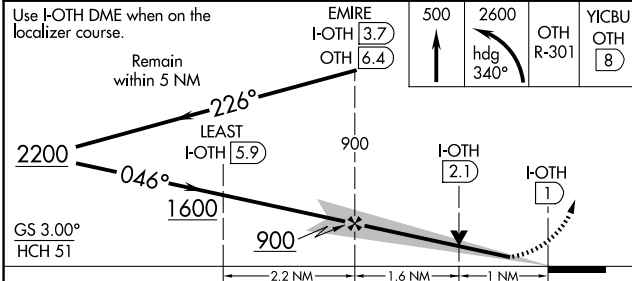
SOUTHWEST OREGON RGNL (OTH)

DME required.	MALSR 	MISSED APPROACH: Climb to 500 then climbing left turn to 2600 on heading 340° and OTH VOR/DME R-301 to YICBU/OTH 8 DME and hold, continue climb-in-hold to 2600.
---------------	-----------	--

AWOS-3PT 135.075	SEATTLE CENTER 127.55 254.35	NORTH BEND TOWER* 118.45 (CTAF) 0	GND CON 127.1
----------------------------	--	---	-------------------------



ELEV 17	D TDZE 16
---------	------------------



CATEGORY	COPTER	
H-ILS 5	216-½	200 (200-½)
H-LOC 5	400-½	384 (400-½)

HIRL Rwy 5-23
MIRL Rwy 13-31
REIL Rws 13, 23 and 31

NW-1, 11 JUN 2026 to 09 JUL 2026

NW-1, 11 JUN 2026 to 09 JUL 2026