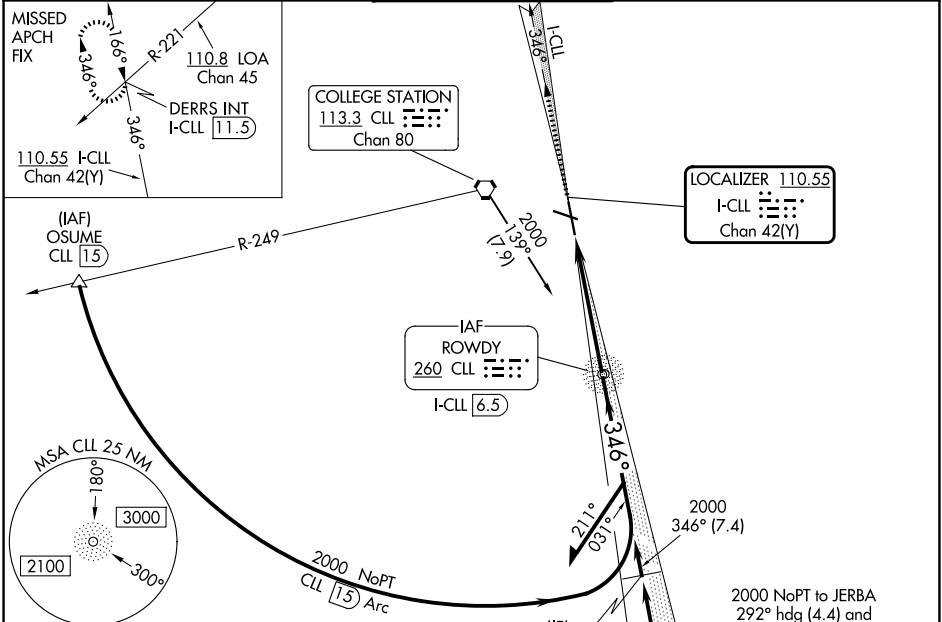


LOC/DME I-CLL 110.55 Chan 42(Y)	APP CRS 346°	Rwy Ldg TDZE Apt Elev 6932 311 321
----------------------------------------------	------------------------	------------------------------------------------------------------------

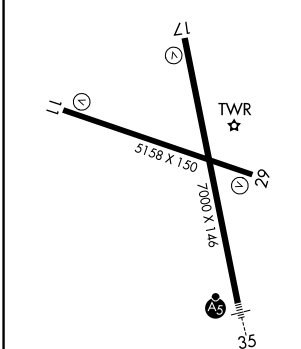
ILS or LOC RWY 35

EASTERWOOD FLD (CLL)

ADF or DME required for procedure entry. ADF or DME required for LOC only.				
<p>▼ For inop ALS, increase S-ILS 35 Cat E visibility to 3/4 SM and S-LOC 35 Cat E visibility to 1 1/2 SM. ILS glideslope unusable for coupled approaches below 1050 feet MSL.</p>			MALSR AS	MISSED APPROACH: Climb to 2500 on I-CLL north course to DERRS INT/I-CLL 11.5 DME and hold.
ATIS 126.85	HOUSTON APP CON 134.3 360.85	EASTERWOOD TOWER ★ 118.5 (CTAF) 284.7	GND CON 128.7 284.7	UNICOM 122.95



ELEV 321	D	TDZE 311
----------	----------	----------



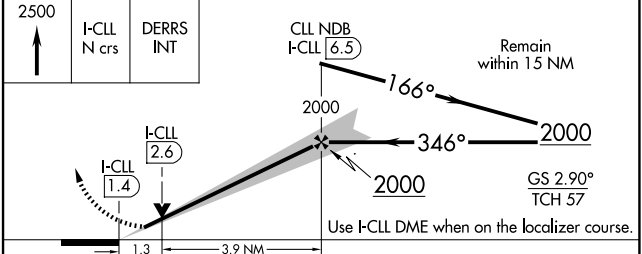
REIL Rwy 29
MIRL Rwy 11-29
HIRL Rwy 17-35

FAF to MAP 5.1 NM

Knots	60	90	120	150	180
Min:Sec	5:06	3:24	2:33	2:02	1:42

Procedure NA for arrival at COUTH on V306 eastbound.

(IAF) COUTH
CLL 20.9



CATEGORY	A	B	C	D	E
S-ILS 35		511-1/2	200 (200-1/2)		
S-LOC 35	760-1/2	449 (500-1/2)		760-7/8	449 (500-7/8)
CIRCLING	860-1 539 (600-1)	880-1 559 (600-1)	1000-2 679 (700-2)	1180-2 3/4 859 (900-2 3/4)	1180-3 859 (900-3)

SC-5, 11 JUN 2026 to 09 JUL 2026

SC-5, 11 JUN 2026 to 09 JUL 2026