


LOC I-LS 108.7	APP CRS 077°	Rwy Ldg TDZE Apt Elev	6118 399 403
--------------------------	------------------------	-----------------------------	---

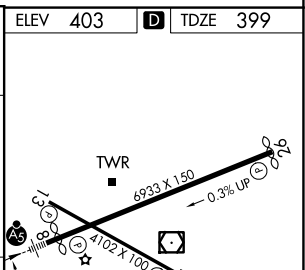
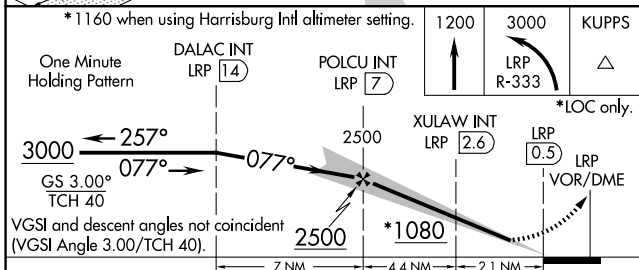
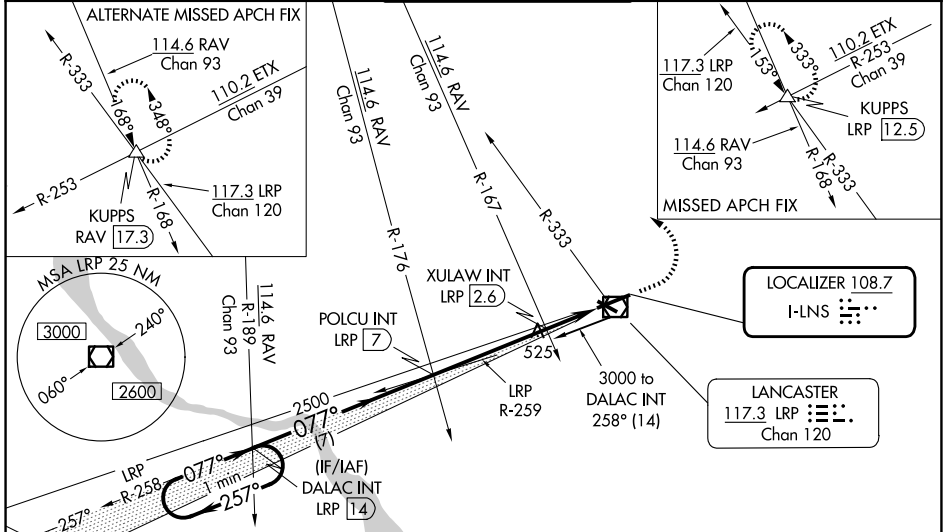
ILS or LOC RWY 8

LANCASTER (LNS)

▼ Night landing: Rwy 13, 31 NA. When local altimeter setting not received, use Harrisburg Intl altimeter setting and increase S-ILS DA to 664 feet; increase all MDA's 80 feet and visibility S-LOC 8 Cats C/D and Circling Cats B/D visibility ¼ SM, increase Circling Cat C visibility ½ SM, increase XULAW fix minimums S-LOC 8 and Circling Cats C/D visibility ¼ SM. For inop MALSR, increase S-LOC 8 Cats C and D visibility ¾ mile. For inop MALSR when using Harrisburg Intl altimeter setting increase S-ILS 8 visibility all Cats ½ mile, S-LOC 8 Cats B visibility ¾ mile, Cat C, D 1 mile, increase Circling Cat B, D visibility ¼ mile. XULAW Fix minimums increase S-LOC 8 Cats C and D visibility to 1 ½ mile and Circling Cat C visibility to 1 ¾ mile.

MALSR

MISSED APPROACH:
 Climb to 1200 then climbing left turn to 3000 on LRP VOR/DME R-333 to KUPPS INT/LRP 12.5 DME and hold.

ATIS 125.675	HARRISBURG APP CON 126.45 281.525	LANCASTER TOWER* 120.9 (CTAF) 0 251.1	GND CON 121.8	UNICOM 122.95
------------------------	---	--	-------------------------	-------------------------



CATEGORY	A	B	C	D
S-ILS 8	599-½		200 (200-½)	
S-LOC 8	1080-½	681 (700-½)		1080-1½ 681 (700-1½)
CIRCLING	1080-1 677 (700-1)		1080-2 677 (700-2)	1080-2¼ 677 (700-2¼)
XULAW FIX MINIMUMS (DUAL VOR RECEIVERS OR DME REQUIRED)				
S-LOC 8	800-½	401 (400-½)	800-¾ 401 (400-¾)	
CIRCLING	940-1	537 (600-1)	960-1 ½ 557 (600-1 ½)	1060-2 657 (700-2)

REIL Rwy 31 **0**
 HIRL Rwy 8-26 **0**
 MIRL Rwy 13-31 **0**

FAF to MAP 6.5 NM

Knots	60	90	120	150	180
Min:Sec	6:30	4:20	3:15	2:36	2:10