

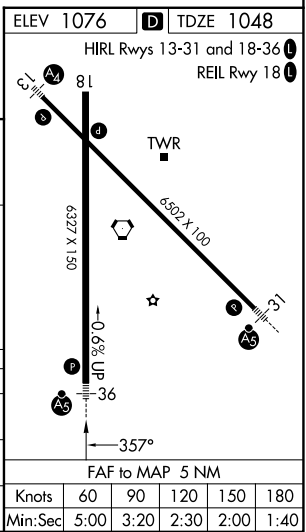
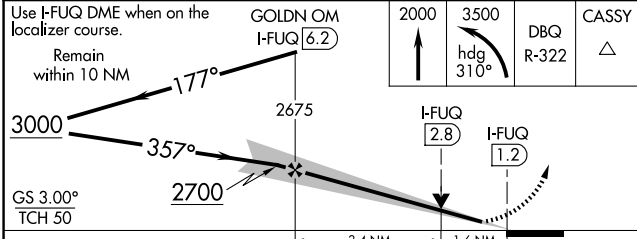
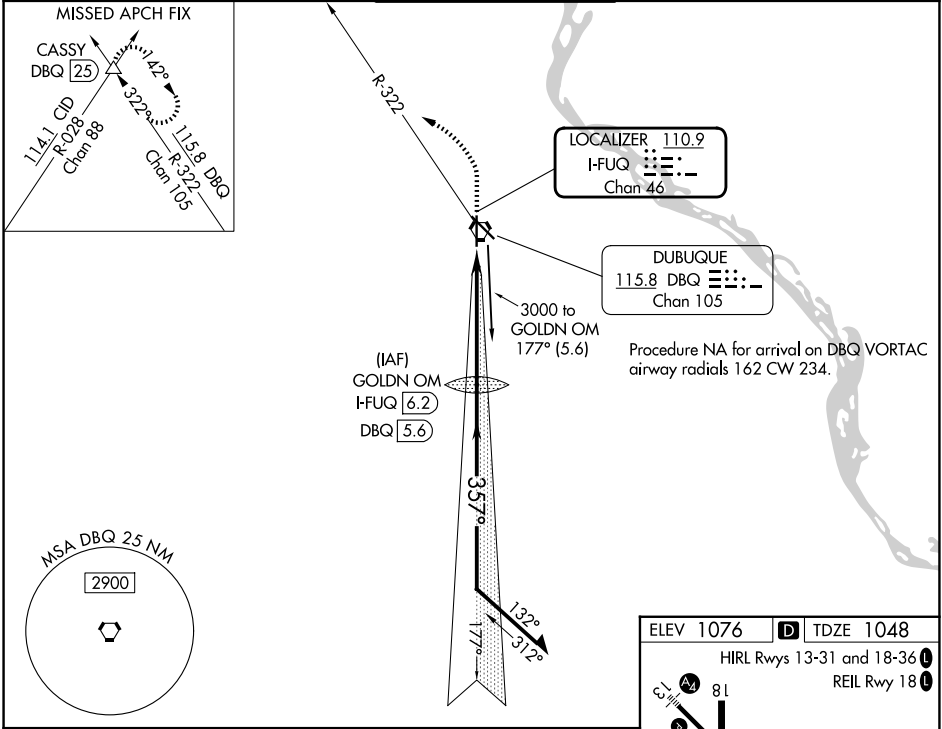
LOC/DME I-FUQ <b>110.9</b> Chan <b>46</b>	APP CRS <b>357°</b>	Rwy Ldg <b>6327</b> TDZE <b>1048</b> Apt Elev <b>1076</b>
---	------------------------	---

# ILS or LOC RWY 36

DUBUQUE RGNL (DBQ)

DME or RADAR required for procedure entry.		MALSR 	MISSED APPROACH: Climb to 2000 then climbing left turn to 3500 on heading 310° and DBQ VORTAC R-322 to CASSY INT/DBQ 25 DME and hold.
 Autopilot coupled approach NA below 1200. *RVR 1800 authorized with use of FD or AP or HUD to DA.			

ATIS <b>127.25</b>	CHICAGO CENTER <b>133.95 281.4</b>	DUBUQUE TOWER * <b>119.5 (CTAF) 254.4</b>	GND CON <b>121.8</b>	UNICOM <b>122.95</b>
-----------------------	---------------------------------------	--	-------------------------	-------------------------



CATEGORY	A	B	C	D
S-ILS 36*	1248/24 200 (200-½)			
S-LOC 36	1580/24	532 (600-½)	1580/55	532 (600-1)
CIRCLING	1580-1 504 (600-1)	1600-1 524 (600-1)	1600-1½ 524 (600-½)	1800-2¼ 724 (800-2¼)

NC-3, 11 JUN 2026 to 09 JUL 2026

NC-3, 11 JUN 2026 to 09 JUL 2026