

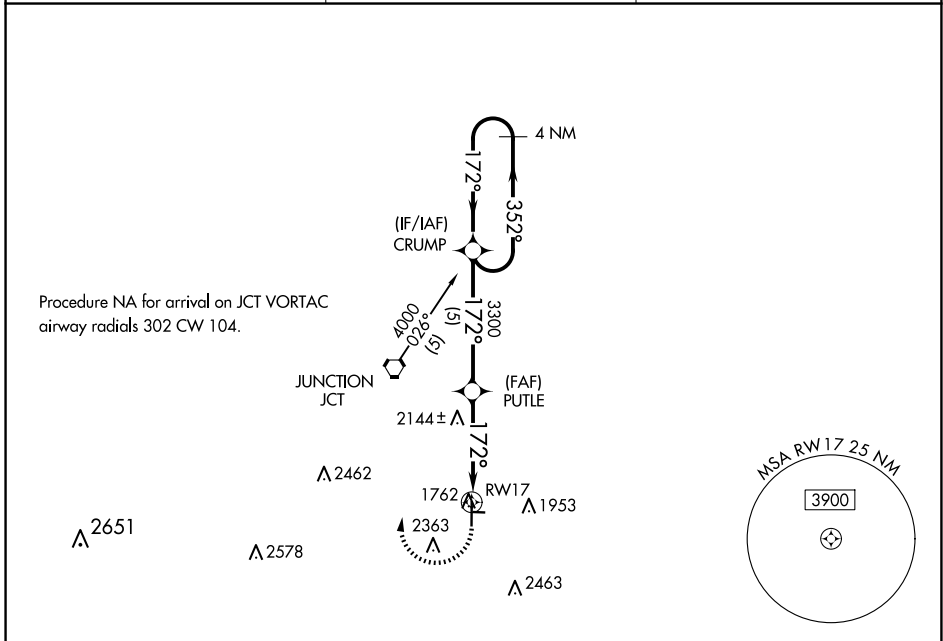
APP CRS 172°	Rwy Idg 5004
	TDZE 1751
	Apt Elev 1754

RNAV (GPS) RWY 17

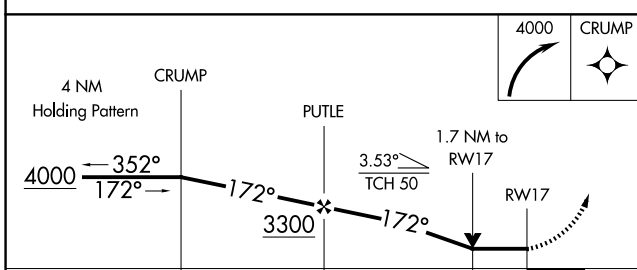
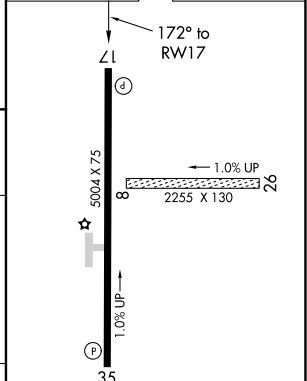
KIMBLE COUNTY (JCT)

RNP APCH - GPS.	MISSED APPROACH: Climbing right turn to 4000 direct CRUMP WP and hold.
<p>▼ Circling NA to Rwy 8-26. Rwy 17 helicopter visibility reduction below 3/4 SM NA.</p> <p>▲ NA</p>	

ASOS 119.275	HOUSTON CENTER 125.75 346.4	UNICOM 122.8 (CTAF) 1
------------------------	---------------------------------------	---------------------------------



ELEV 1754	TDZE 1751
-----------	-----------



CATEGORY	A	B	C	D
LNVA MDA	2420-1	669 (700-1)	2420-1 3/4 669 (700-1 3/4)	NA
CIRCLING	2420-1 666 (700-1)	2680-1 1/4 926 (1000-1 1/4)	2780-3 1026 (1100-3)	NA

MIRL Rwy 17-35 1

SC-3, 11 JUN 2026 to 09 JUL 2026

SC-3, 11 JUN 2026 to 09 JUL 2026