

WAAS CH <b>61236</b> <b>W13A</b>	APP CRS <b>129°</b>	Rwy Idg <b>6005</b> TDZE <b>474</b> Apt Elev <b>474</b>
--	------------------------	---

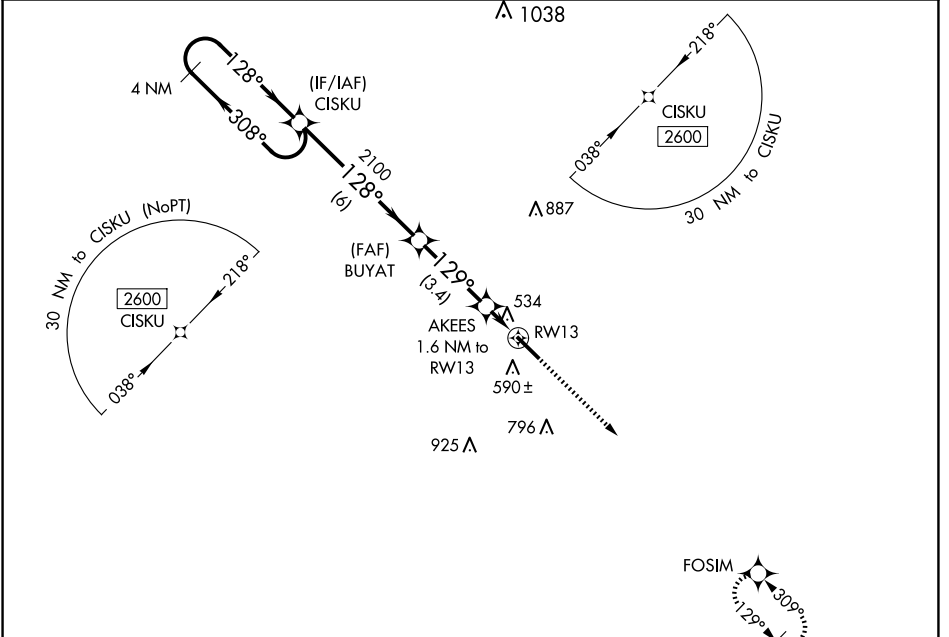
# RNAV (GPS) RWY 13

COTULLA-LA SALLE COUNTY (COT)

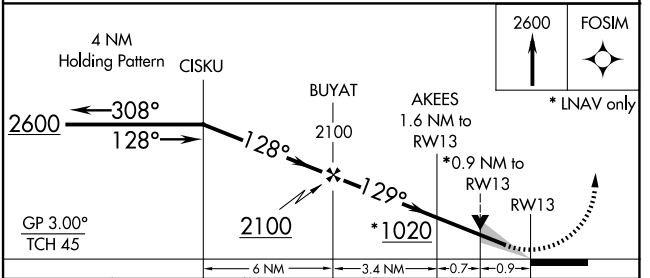
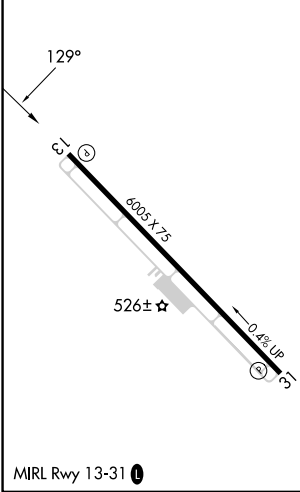
**▼** For uncompensated Baro-VNAV systems, LNAV/VNAV NA below -5°C (23°F) or above 54°C (130°F). DME/DME RNP-0.3 NA.

MISSED APPROACH: Climb to 2600 direct FOSIM and hold.

ASOS <b>118.325</b>	HOUSTON CENTER <b>134.6 322.5</b>	UNICOM <b>122.7 (CTAF) 0</b>
------------------------	--------------------------------------	---------------------------------



ELEV <b>474</b>	TDZE <b>474</b>
-----------------	-----------------



CATEGORY	A	B	C	D
LPV DA	724-1	250 (300-1)		NA
LNAV/VNAV DA	724-1	250 (300-1)		NA
LNAV MDA	800-1	326 (400-1)		NA
<b>C</b> CIRCLING	920-1 446 (500-1)	940-1 466 (500-1)	1120-1¾ 646 (700-1¾)	NA

SC-3, 11 JUN 2026 to 09 JUL 2026

SC-3, 11 JUN 2026 to 09 JUL 2026