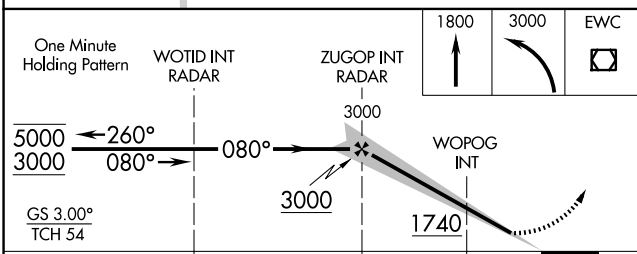
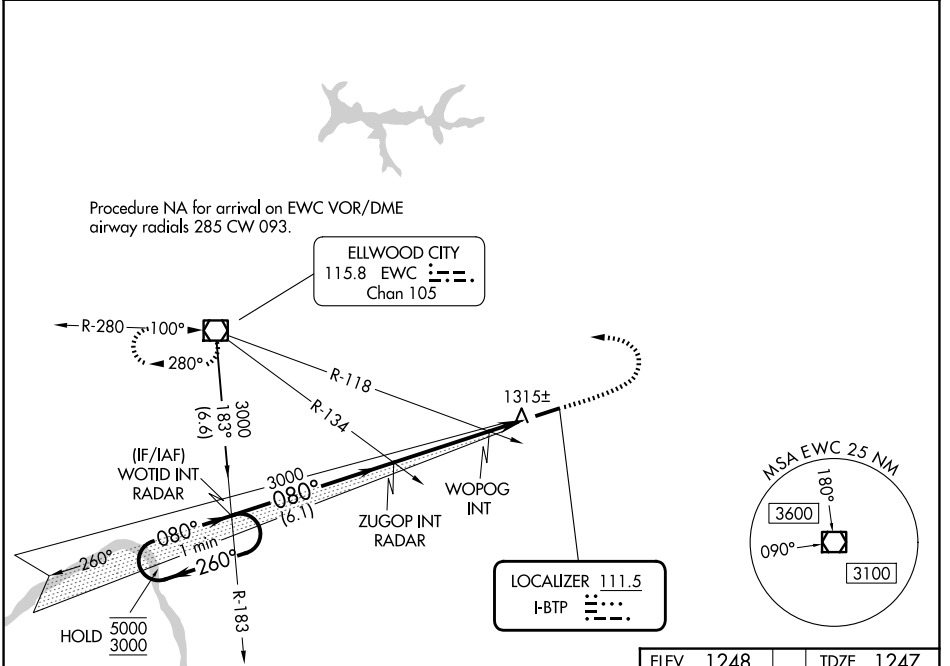


LOC I-BTP 111.5	APP CRS 080°	Rwy Ldg 4801
		TDZE 1247
		Apt Elev 1248

ILS or LOC RWY 8

PITTSBURGH/BUTLER RGNL (BTP)

<p>▼ Rwy 8 helicopter visibility reduction below 3/4 SM NA. ▲ Inop table does not apply to S-ILS 8 all Cats.</p>	<p>MALSF</p>	<p>MISSED APPROACH: Climb to 1800 then climbing left turn to 3000 direct EWC VOR/DME and hold.</p>	
		AWOS-3PT 121.45	PITTSBURGH APP CON 124.75 338.2



ELEV 1248	TDZE 1247				
1800	3000	EWC			
↑	↶				
CATEGORY	A	B	C	D	
S-ILS 8		1497-3/4	250 (300-3/4)		
S-LOC 8	1740-3/4	493 (500-3/4)	1740-1 1/8	493 (500-1 1/8)	
CIRCLING	1820-1	572 (600-1)	2080-2 1/2 832 (900-2 1/2)	2080-2 3/4 832 (900-2 3/4)	
WOPOG FIX MINIMUMS (DUAL VOR RECEIVERS REQUIRED)					
S-LOC 8		1600-3/4	353 (400-3/4)		
CIRCLING	1820-1	572 (600-1)	2080-2 1/2 832 (900-2 1/2)	2080-2 3/4 832 (900-2 3/4)	
REIL Rwy 26 HIRL Rwy 8-26					
FAF to MAP 5.4 NM					
Knots	60	90	120	150	180
Min:Sec	5:24	3:36	2:42	2:10	1:48

NE-4, 11 JUN 2026 to 09 JUL 2026

NE-4, 11 JUN 2026 to 09 JUL 2026