

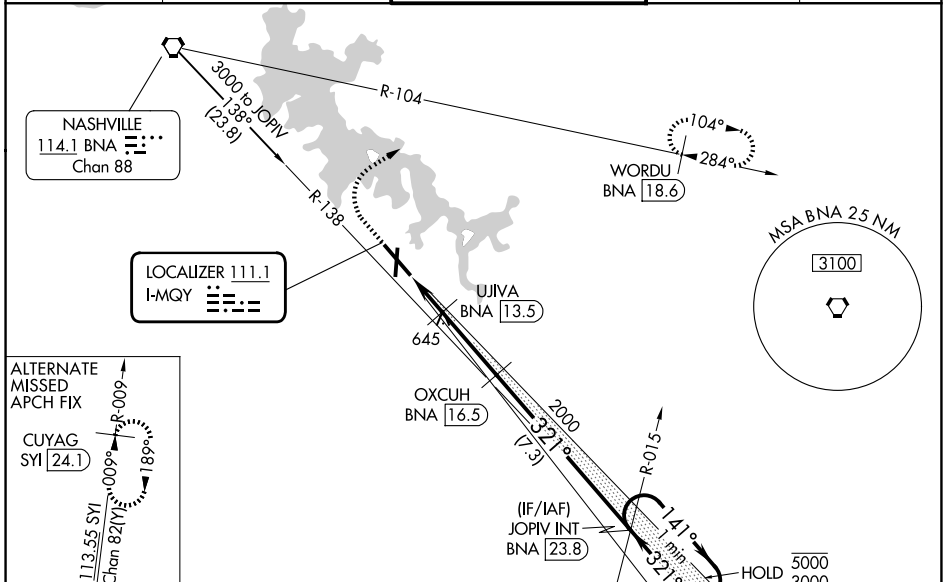
LOC I-MQY 111.1	APP CRS 321°	Rwy Ldg TDZE Apt Elev	8038 518 543
---------------------------	------------------------	-----------------------------	---

ILS or LOC RWY 32

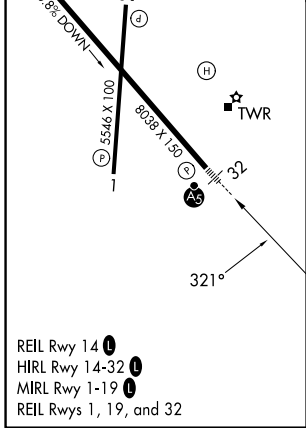
SMYRNA (MQY)

DME required.			MISSED APPROACH: Climb to 1500 then climbing right turn to 3000 on heading 060° and on BNA VORTAC R-104 to WORDU/ BNA 18.6 DME and hold.
NA	Circling Rwy 14 NA at night. DME from BNA VORTAC, simultaneous reception of I-MQY and BNA DME required. For Inop ALS, increase S-LOC 32 Cats C/D visibility to 1 SM.		

AWOS-3PT 119.125	NASHVILLE APP CON 118.4 360.7	SMYRNA TOWER ★ 118.5 (CTAF) 0 233.1	GND CON 121.4	UNICOM 122.95
----------------------------	---	---	-------------------------	-------------------------



ELEV 543	TDZE 518
-----------------	-----------------



1500 3000 hdg 060°	BNA R-104 WORDU BNA 18.6	VGSi and ILS glidepath not coincident (VGSi Angle 3.00/TCH 57).	JOPIV INT BNA 23.8	One Minute Holding Pattern
BNA 11.7 BNA 12.8 UJIVA BNA 13.5 OXCUH BNA 16.5	2000 1100 2000	141° → 5000 ← 321° 3000	GS 2.83° TCH 51	
CATEGORY	A	B	C	D
S-ILS 32	718-1/2 200 (200-1/2)			
S-LOC 32	900-1/2 382 (400-1/2)	900-5/8 382 (400-5/8)		
CIRCLING	1100-1 557 (600-1)	1180-1 637 (700-1)	1260-2 717 (800-2)	1480-3 937 (1000-3)

SE-1, 11 JUN 2026 to 09 JUL 2026

SE-1, 11 JUN 2026 to 09 JUL 2026