

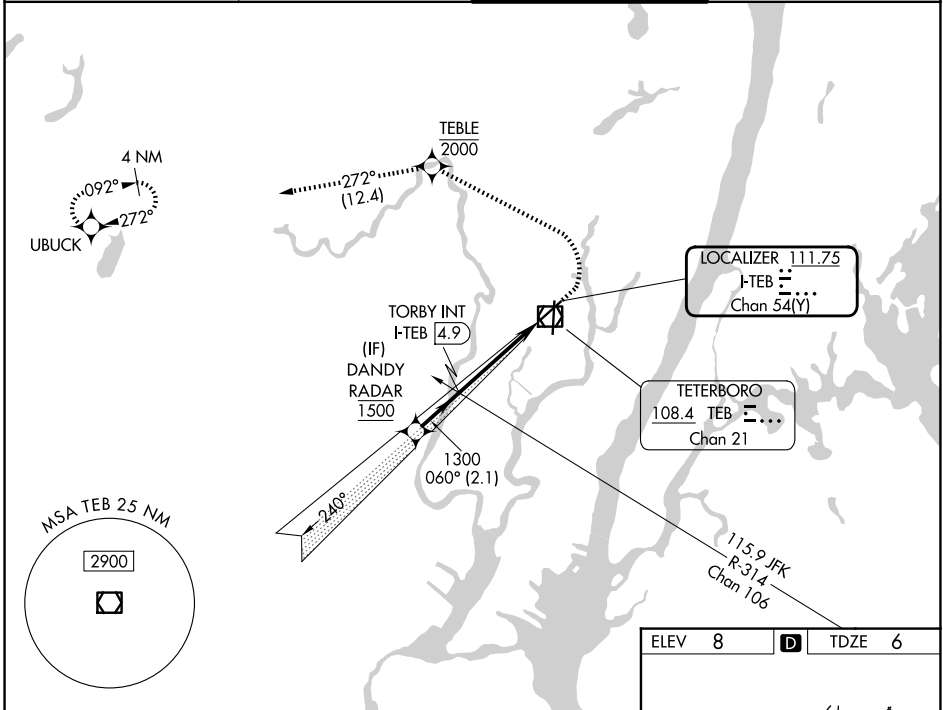
LOC/DME I-TEB 111.75 Chan 54 (Y)	APP CRS 060°	Rwy Ldg 6014 TDZE 6 Apt Elev 8
--	------------------------	---

COPTER ILS Y or LOC Y RWY 6

TETERBORO (TEB)

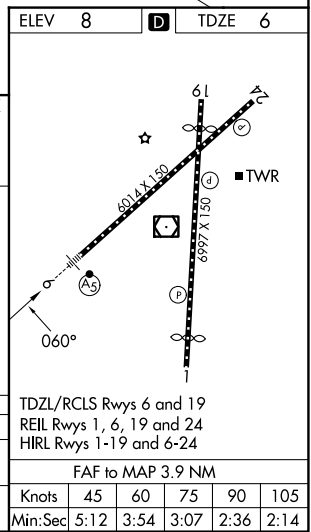
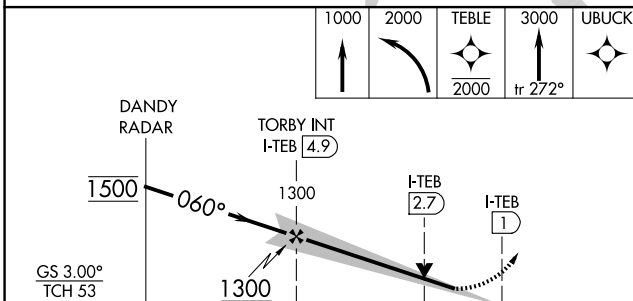
RNP APCH - GPS. RADAR required. ▼ ▲NA	MALSRL AS	MISSED APPROACH: Climb to 1000, then climbing left turn to 2000 direct TEBLE, cross TEBLE at or below 2000, then climb to 3000 on track 272° to UBUCK and hold.
--	--------------	---

D-ATIS 114.2 132.85	NEWARK APP CON 127.6 379.9	TETERBORO TOWER 119.5	GND CON 121.9
-------------------------------	--------------------------------------	---------------------------------	-------------------------



NE-2, 11 JUN 2026 to 09 JUL 2026

NE-2, 11 JUN 2026 to 09 JUL 2026



CATEGORY	COPTER	
H-ILS 6	206/12	200 (200-¼)
H-LOC 6	580/24	574 (600-½)

ELEV	8	TDZE	6		
TDZL/RCLS Rwy 6 and 19 REIL Rwy 1, 6, 19 and 24 HIRL Rwy 1-19 and 6-24					
FAF to MAP 3.9 NM					
Knots	45	60	75	90	105
Min:Sec	5:12	3:54	3:07	2:36	2:14