

NDB MOG 404	APP CRS 356°	Rwy Idg TDZE Apt Elev	N/A N/A 2651
-----------------------	------------------------	-----------------------------	---

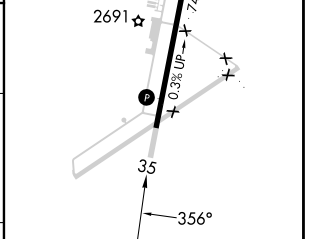
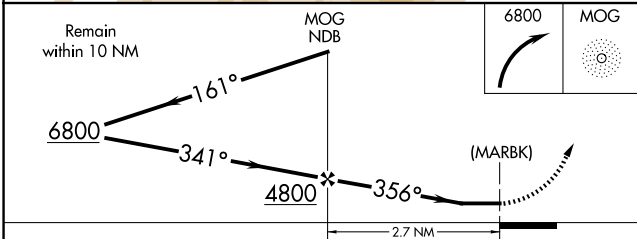
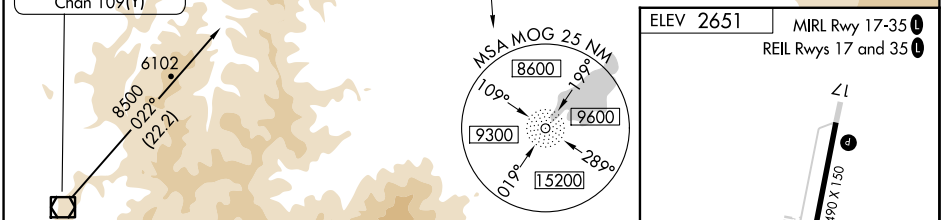
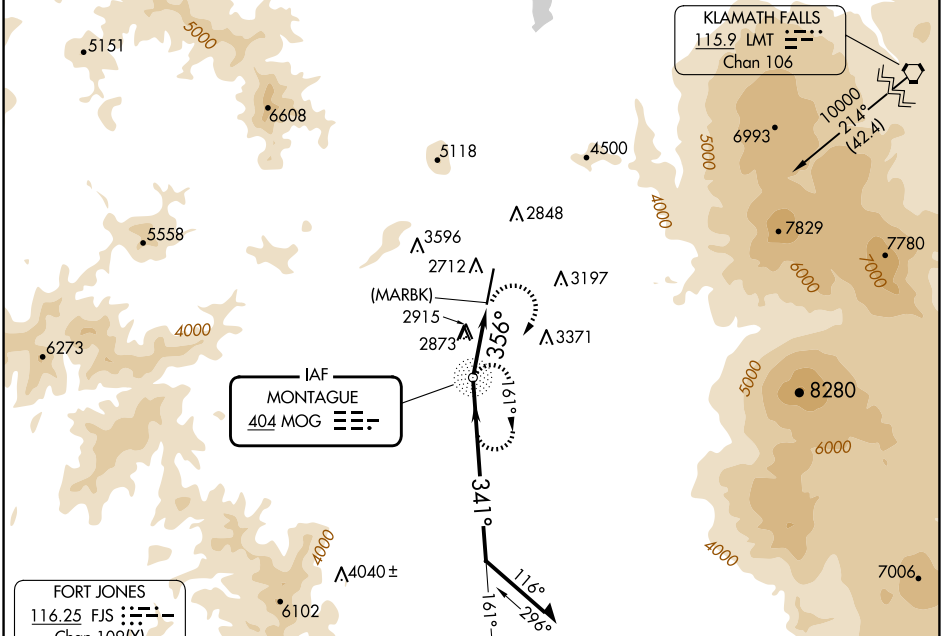
NDB or GPS-A

SISKIYOU COUNTY (SIY)

NA Use Siskiyou County altimeter setting; when not available, use Montague-Yreka Rohrer Fld altimeter setting; when neither received, procedure not authorized. Circling NA for Cats C and D west of Rwy 17-35.

MISSED APPROACH: Climbing right turn to 6800 direct MOG NDB and hold.

ASOS 121.125	SEATTLE CENTER 124.85 306.3	UNICOM 123.0 (CTAF) 0
------------------------	---------------------------------------	---------------------------------



CATEGORY	FAF to MAP 2.7 NM				
	A	B	C	D	
CIRCLING	3760-1¼ 1109 (1200-1¼)	3760-1½ 1109 (1200-1½)	3980-3 1329 (1400-3)	4220-3 1569 (1600-3)	
	Knots 60 90 120 150 180				
	Min:Sec 2:42 1:48 1:21 1:05 0:54				

SW-2, 11 JUN 2026 to 09 JUL 2026

SW-2, 11 JUN 2026 to 09 JUL 2026