

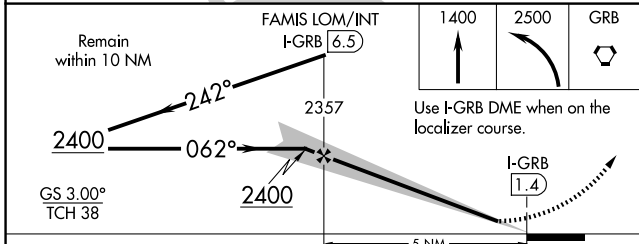
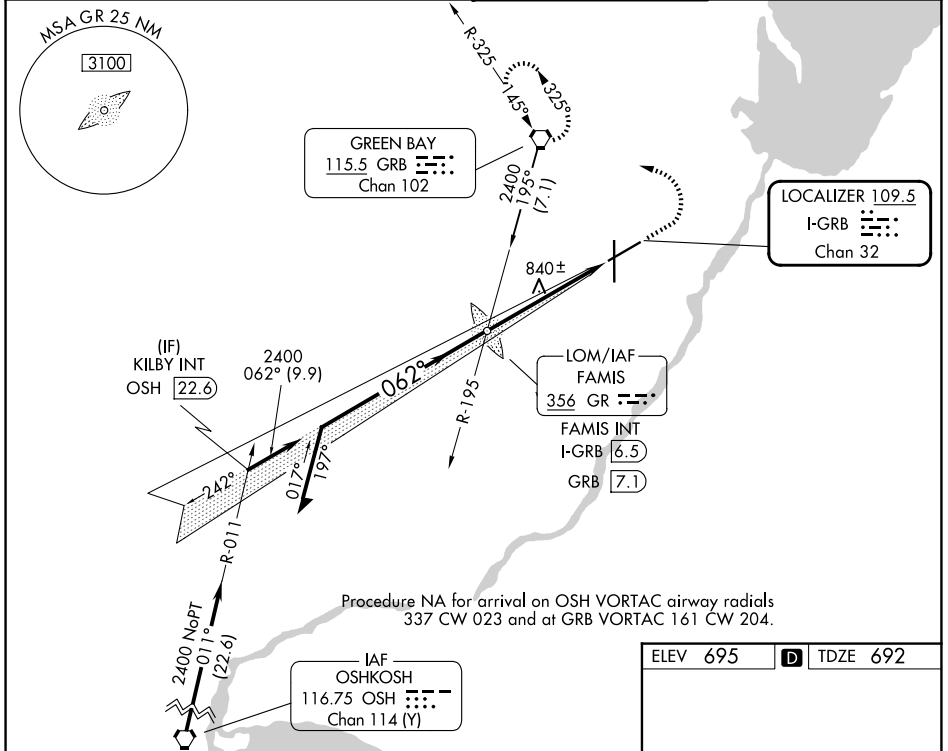
LOC/DME I-GRB <b>109.5</b> Chan <b>32</b>	APP CRS <b>062°</b>	Rwy Ldg <b>7699</b> TDZE <b>692</b> Apt Elev <b>695</b>
---	------------------------	---

# ILS or LOC RWY 6

GREEN BAY/AUSTIN STRAUBEL INTL (GRB)

<p><b>⚠</b> For inop ALS, increase S-LOC 6 Cats C/D visibility to 1 3/8 SM. *RVR 1800 authorized with the use of FD or AP or HUD to DA.</p> <p><b>ASR</b></p>	<p><b>MALSR</b></p>	<p><b>MISSED APPROACH:</b> Climb to 1400 then climbing left turn to 2500 direct GRB VORTAC and hold.</p>
---	---------------------	--

<p>ATIS <b>124.1</b></p>	<p>GREEN BAY APP CON* <b>119.4 338.2</b></p>	<p>GREEN BAY TOWER* <b>118.7(CTAF) 257.8</b></p>	<p>GND CON <b>121.9</b></p>
------------------------------	--	--	---------------------------------



ELEV 695	<b>D</b> TDZE 692
----------	-------------------

REIL Rwy 18 **Ⓛ**  
HIRL Rwy 6-24 and 18-36 **Ⓛ**  
FAF to MAP 5 NM

Knots	60	90	120	150	180
Min:Sec	5:00	3:20	2:30	2:00	1:40

CATEGORY	A	B	C	D
S-ILS 6 *	892/24 200 (200-1/2)			
S-LOC 6	1200/24	508 (600-1/2)	1200/55	508 (600-1)
CIRCLING	1200-1 505 (600-1)		1300-1 3/4 605 (700-1 3/4)	1300-2 605 (700-2)

EC-3, 11 JUN 2026 to 09 JUL 2026

EC-3, 11 JUN 2026 to 09 JUL 2026