

LOC I-UIIN <b>110.1</b>	APP CRS <b>038°</b>	Rwy Ldg <b>7098</b>
		TDZE <b>763</b>
		Apt Elev <b>768</b>

# ILS or LOC RWY 4

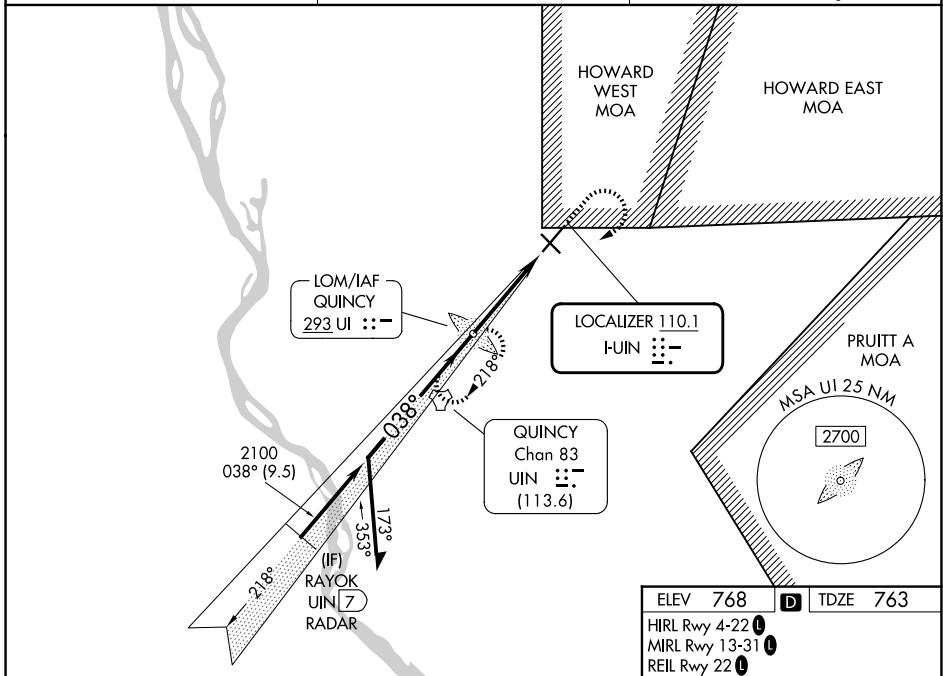
QUINCY RGNL-BALDWIN FLD (UIIN)

ADF required.  
RADAR required for procedure entry at RAYOK.

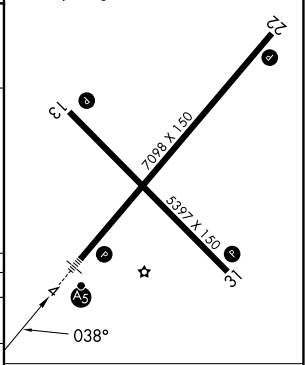
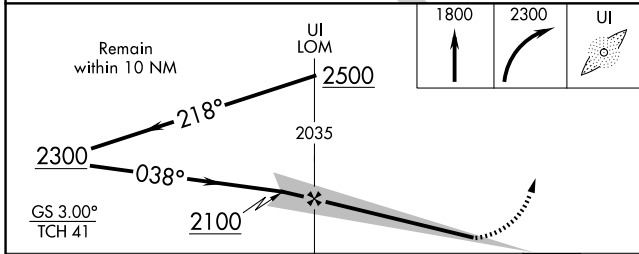
**NA** DME from UIIN TACAN. DME use requires simultaneous reception of I-UIIN and UIIN TACAN. When local altimeter setting not received, use Pittsfield altimeter setting and increase S-ILS 04 DA to 1033 feet; increase all MDAs 80 feet and S-LOC 04 visibility Cat C/D 3/8 SM. For inop ALS when local altimeter not received, increase S-ILS 4 all Cats visibility to 7/8 SM and S-LOC 4 Cat C and D visibility to 1 3/8 SM.

MALSRL  
 MISSED APPROACH: Climb to 1800 then climbing right turn to 2300 direct QUINCY LOM and hold.

ASOS <b>121.425</b>	KANSAS CITY CENTER <b>126.225 317.775</b>	UNICOM <b>123.0(CTAF) 1</b>
------------------------	--	--------------------------------



ELEV 768	TDZE 763
HIRL Rwy 4-22	MIRL Rwy 13-31
REIL Rwy 22	



CATEGORY	A	B	C	D
S-ILS 4		963-1/2	200 (200-1/2)	
S-LOC 4	1160-1/2	397 (400-1/2)	1160-5/8	397 (400-5/8)
CIRCLING	1180-1 412 (500-1)	1220-1 452 (500-1)	1240-1 1/2 472 (500-1 1/2)	1320-2 552 (600-2)

FAF to MAP 3.9 NM					
Knots	60	90	120	150	180
Min:Sec	3:54	2:36	1:57	1:34	1:18

EC-3, 11 JUN 2026 to 09 JUL 2026

EC-3, 11 JUN 2026 to 09 JUL 2026