

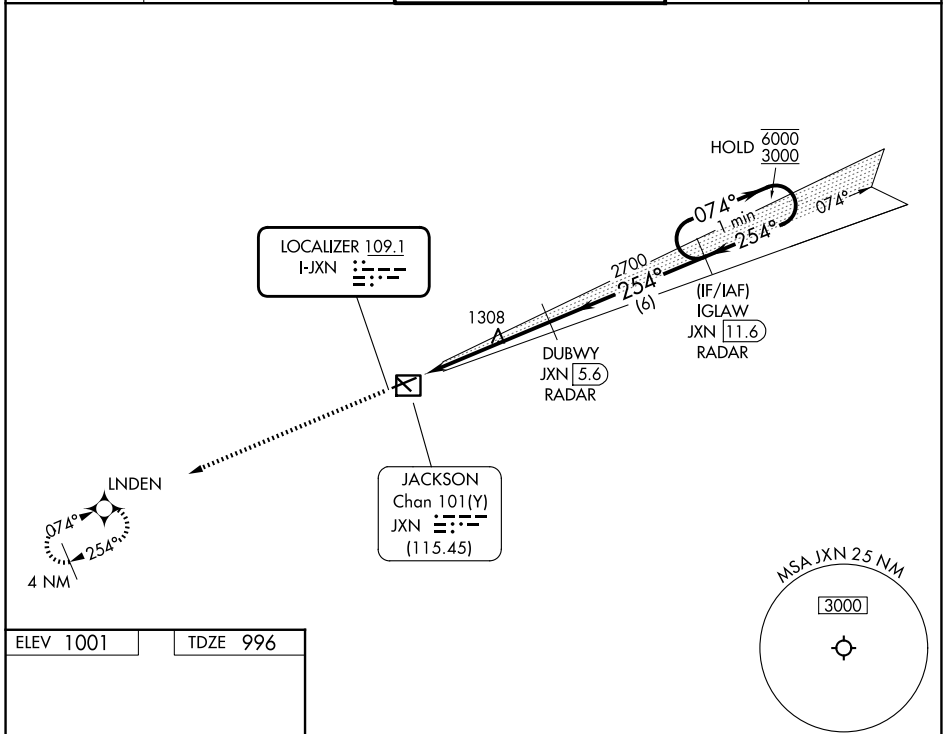
LOC I-JXN 109.1	APP CRS 254°	Rwy Ldg TDZE Apt Elev	5351 996 1001
---------------------------	------------------------	-----------------------------	--

ILS or LOC RWY 25

JACKSON COUNTY/REYNOLDS FLD (JXN)

RNAV-1 GPS required. RADAR required for procedure entry. DME or RADAR required.		MALSR	MISSED APPROACH: Climb to 3000 direct LNDEN and hold.	
For inop ALS, increase S-LOC 25 Cat C/D visibility to 1¾ SM.				

ATIS 125.725	GREAT LAKES APP CON* 127.3 335.575	JACKSON TOWER* 128.475 (CTAF) 257.8	GND CON 121.9	UNICOM 122.95
------------------------	--	--	-------------------------	-------------------------



ELEV 1001	TDZE 996
-----------	----------

HIRL Rwy 7-25
MIRL Rwy 14-32
REIL Rws 7 and 32

FAF to MAP 5.2 NM

Knots	60	90	120	150	180
Min:Sec	5:12	3:28	2:36	2:05	1:44

	3000	LNDEN	IGLAW JXN 11.6 RADAR	1 Minute Holding Pattern
*LOC only.	JXN 0.4	JXN 2.1	DUBWY JXN 5.6 RADAR	IGLAW JXN 11.6 RADAR
	1.8	3.4 NM	6 NM	
CATEGORY	A	B	C	D
S-ILS 25	1196-½		200 (200-½)	
S-LOC 25	1620-½	624 (700-½)	1620-1¾	624 (700-1¾)
CIRCLING	1620-1	619 (700-1)	1660-1¾ 659 (700-1¾)	1660-2 659 (700-2)

GS 3.00°
TCH 45

EC-1, 11 JUN 2026 to 09 JUL 2026

EC-1, 11 JUN 2026 to 09 JUL 2026