

LOC/DME I-HCV 110.3 Chan 40	APP CRS 052°	Rwy Ldg 6215 TDZE 947 Apt Elev 947
---	------------------------	---

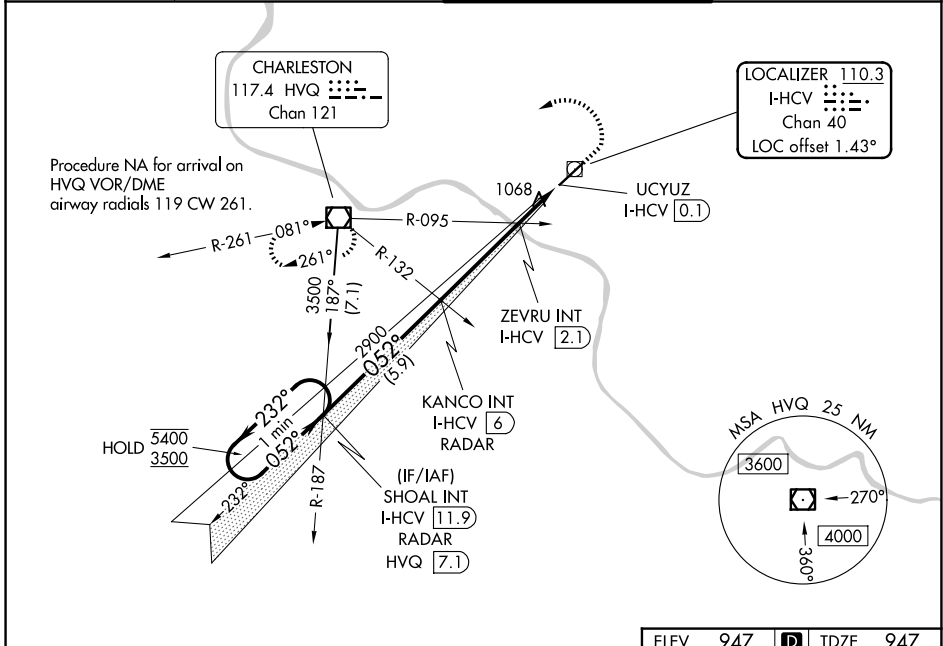
ILS or LOC RWY 5

WEST VIRGINIA INTL YEAGER (CRW)

Autopilot coupled approach NA below 1300.

MISSED APPROACH: Climb to 1800 then climbing left turn to 3500 direct HVQ VOR/DME and hold.

ATIS 127.6	CHARLESTON APP CON 124.1 269.125	CHARLESTON TOWER 125.7 257.8	GND CON 121.8 348.6
----------------------	--	--	-------------------------------



	ELEV 947	D	TDZE 947
One Minute Holding Pattern	SHOAL INT I-HCV 11.9 RADAR	1800	3500 HVQ
5400 ← 232°	← 052° →	2900	1640
3500	052°	2900	1640
GS 3.00°	TCH 56	1 NM	1 NM 0.1
	5.9 NM	3.9 NM	
CATEGORY	A	B	C
S-ILS 5		1197/40	250 (300-¾)
S-LOC 5	1640/55	693 (700-1)	1640-2 693 (700-2)
CIRCLING	1640-1	693 (700-1)	1760-2½ 813 (900-2½) 1880-3 933 (1000-3)
ZEVUR FIX MINIMUMS (DUAL VOR RECEIVERS OR DME REQUIRED)			
S-LOC 5		1320/55	373 (400-1)
CIRCLING	1600-1	653 (700-1)	1760-2½ 813 (900-2½) 1880-3 933 (1000-3)
HIRL Rwy 5-23 REIL Rwys 5			
FAF to MAP 5.9 NM			
Knots	60	90	120 150 180
Min:Sec	5:54	3:56	2:57 2:22 1:58

NE-4, 11 JUN 2026 to 09 JUL 2026

NE-4, 11 JUN 2026 to 09 JUL 2026