

26134

AIRPORT DIAGRAM

AL-851 (FAA)

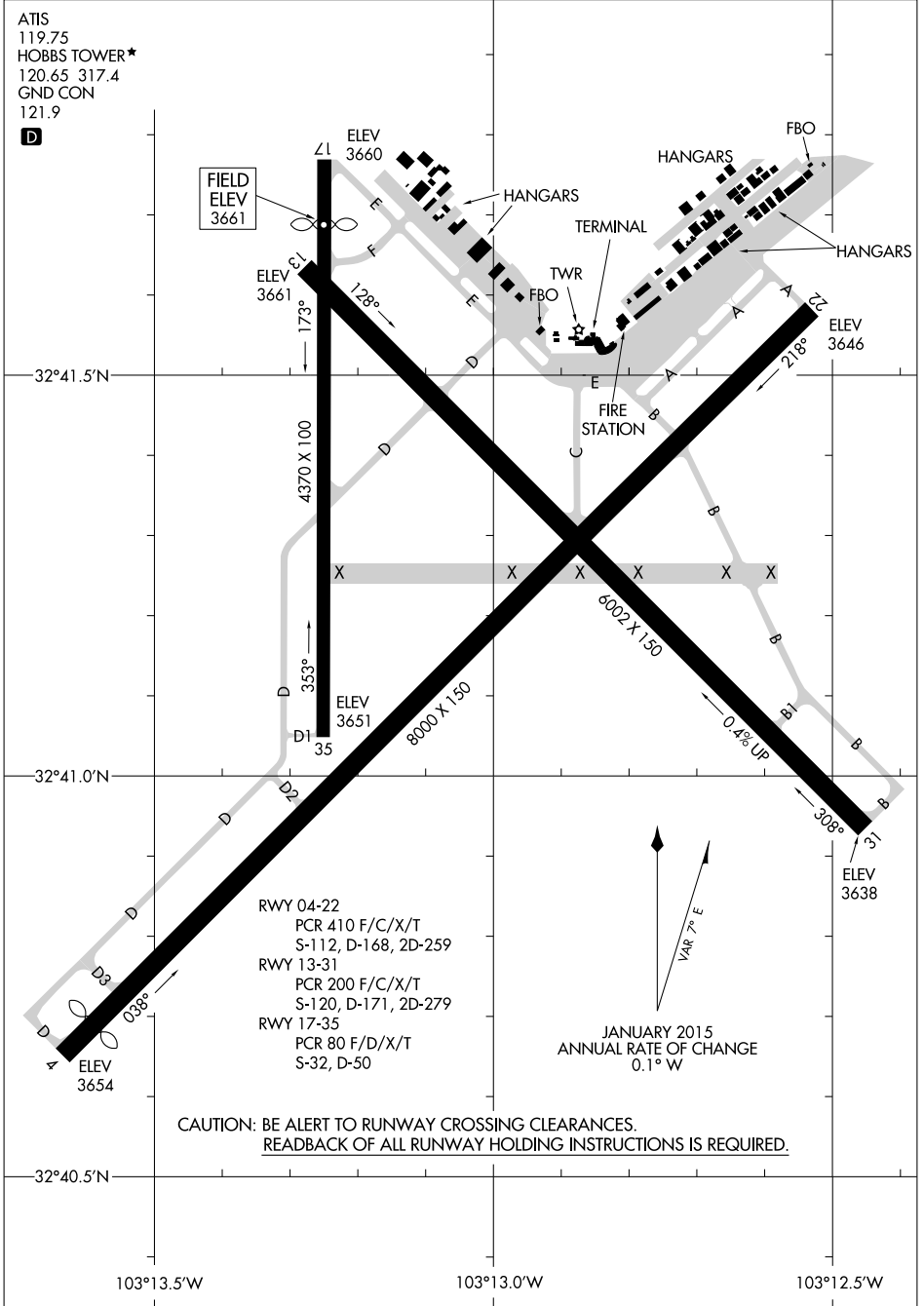
LEA COUNTY RGNL (HOB)
HOBBES, NEW MEXICO

ATIS
119.75
HOBBES TOWER*
120.65 317.4
GND CON
121.9



SW-1, 11 JUN 2026 to 09 JUL 2026

SW-1, 11 JUN 2026 to 09 JUL 2026



RWY 04-22
PCR 410 F/C/X/T
S-112, D-168, 2D-259

RWY 13-31
PCR 200 F/C/X/T
S-120, D-171, 2D-279

RWY 17-35
PCR 80 F/D/X/T
S-32, D-50

VAR 7° E

JANUARY 2015
ANNUAL RATE OF CHANGE
0.1° W

CAUTION: BE ALERT TO RUNWAY CROSSING CLEARANCES.
READBCK OF ALL RUNWAY HOLDING INSTRUCTIONS IS REQUIRED.

AIRPORT DIAGRAM

26134

HOBBES, NEW MEXICO
LEA COUNTY RGNL (HOB)