

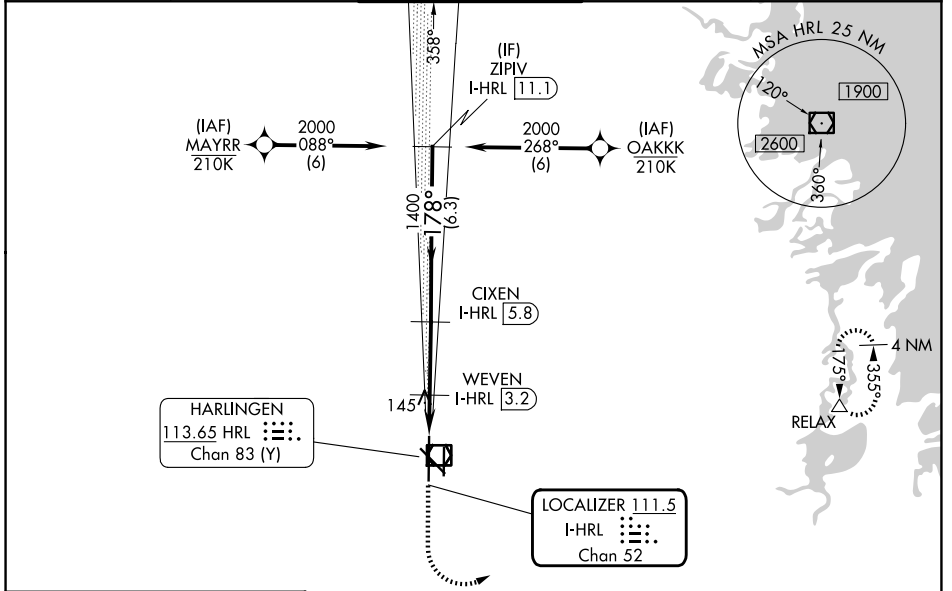
LOC/DME I-HRL	APP CRS	Rwy Ldg	9400
111.5	178°	TDZE	35
Chan 52		Apt Elev	36

ILS or LOC RWY 18R

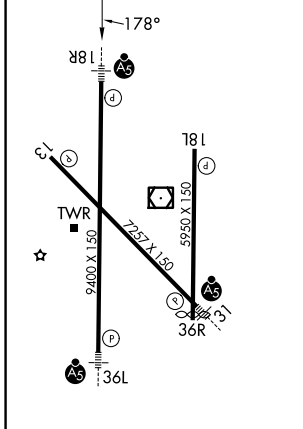
VALLEY INTL (H.R.L.)

RNP APCH - GPS.		MALSRR MISSED APPROACH: Climb to 500 then climbing left turn to 2000 direct RELAX and hold.	
⚠ When local altimeter setting not received, use Port Isabel altimeter setting: increase S-ILS 18R DA to 277 feet; increase all MDAs 60 feet and S-LOC 18R visibility Cat C/D to RVR 4000 and Circling Cat C/D ¼ SM. For inop ALS when using Port Isabel altimeter setting, increase S-LOC 18R visibility Cat C/D to RVR 5500. VDP NA when using Port Isabel altimeter setting. *RVR 1800 authorized with use of FD or AP or HUD to DA. (NA when using secondary altimeter setting).			

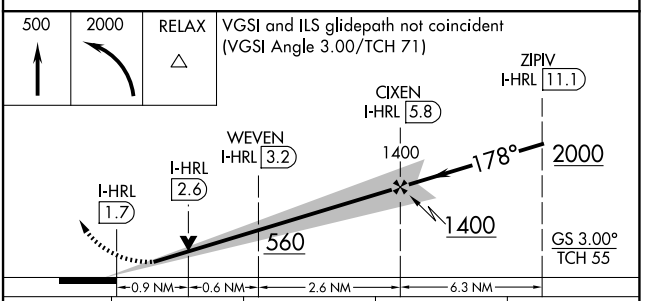
ATIS	VALLEY APP CON	HARLINGEN TOWER ★	GND CON	UNICOM
124.85	120.7 279.5	119.3 (CTAF) 0 317.6	121.7	122.95



ELEV 36	D	TDZE 35
---------	----------	---------



MIRL Rwy 18L-36R
 REIL Rwy 13 and 18L
 HIRL Rwy 13-31 and 18R-36L



VGSI and ILS glidepath not coincident (VGSI Angle 3.00/TCH 71)				
CATEGORY	A	B	C	D
S-ILS 18R*	235/24 200 (200-½)			
S-LOC 18R	400/24	365 (400-½)	400/35	365 (400-¾)
CIRCLING	460-1 424 (500-1)	560-1 524 (600-1)	600-1½ 564 (700-1½)	680-2 644 (700-2)

SC-3, 11 JUN 2026 to 09 JUL 2026

SC-3, 11 JUN 2026 to 09 JUL 2026