

RNAV (GPS) RWY 10

LAKE CITY GATEWAY (LCQ)

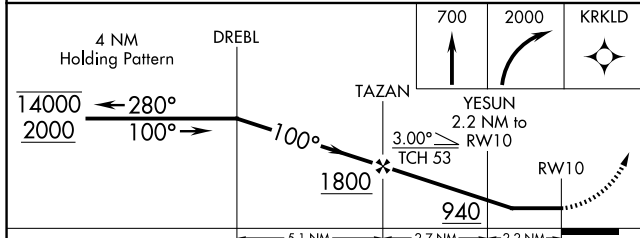
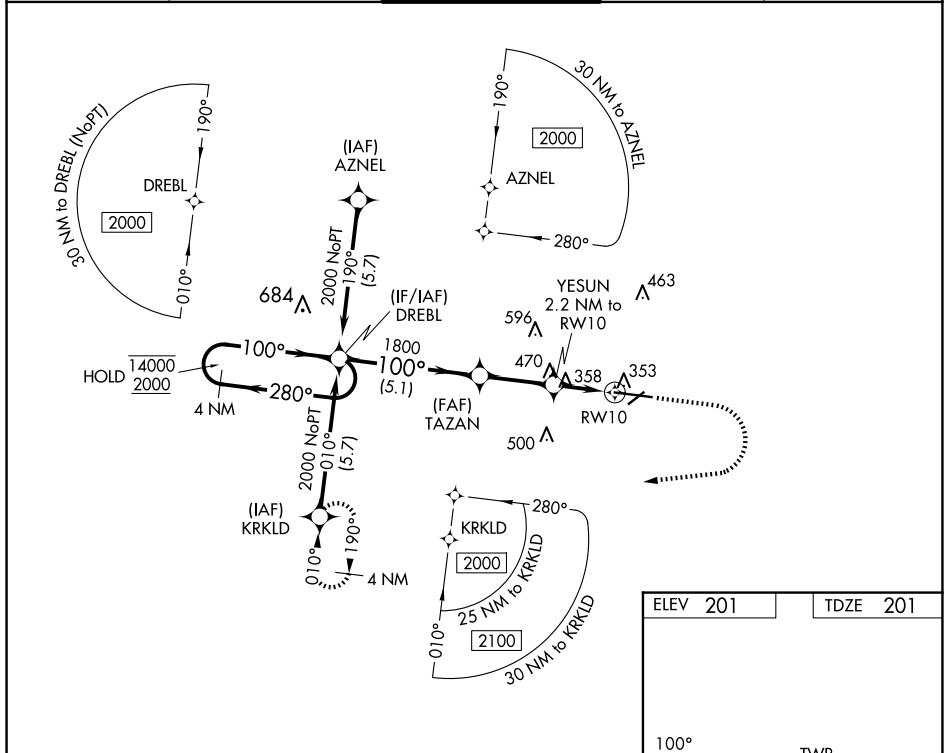
APP CRS	Rwy Ldg	8003
100°	TDZE	201
	Apt Elev	201

RNP APCH - GPS.

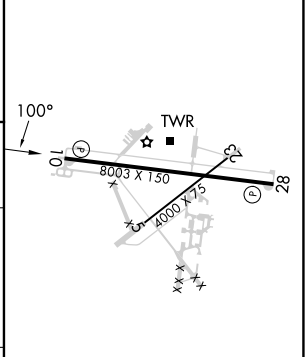
⚠ Rwy 10 helicopter visibility reduction below 1 SM NA. When local altimeter setting not received, use GNV altimeter setting and increase all MDAs 100 feet, increase LNAV Cat C/D visibility $\frac{3}{8}$ SM and Circling Cat C visibility $\frac{1}{2}$ SM and Cat D $\frac{1}{4}$ SM. Straight-in Rwy 10 NA at night, Circling Rwy 5, 10, 23 NA at night.

MISSED APPROACH: Climb to 700 then climbing right turn to 2000 direct KRKLD and hold.

AWOS-3 120.675	JACKSONVILLE CENTER 125.375 254.325	LAKE CITY TOWER ★ 119.2 (CTAF) 0 314.6	GND CON 121.9	UNICOM 122.95
--------------------------	---	--	-------------------------	-------------------------



ELEV 201	TDZE 201
----------	----------



CATEGORY	A	B	C	D
LNAV MDA	700-1 499 (500-1)		700-1 $\frac{3}{8}$ 499 (500-1 $\frac{3}{8}$)	
CIRCLING	760-1 559 (600-1)		780-1 $\frac{1}{2}$ 579 (600-1 $\frac{1}{2}$)	960-2 $\frac{1}{2}$ 759 (800-2 $\frac{1}{2}$)

REIL Rwy 10 and 28 **0**
MIRL Rwy 5-23 and 10-28 **0**

SE-3, 11 JUN 2026 to 09 JUL 2026

SE-3, 11 JUN 2026 to 09 JUL 2026