


LOC I-CIU 110.3	APP CRS 157°	Rwy Ldg 7203
		TDZE 799
		Apt Elev 799

ILS or LOC RWY 16

CHIPPEWA COUNTY INTL (CIU)

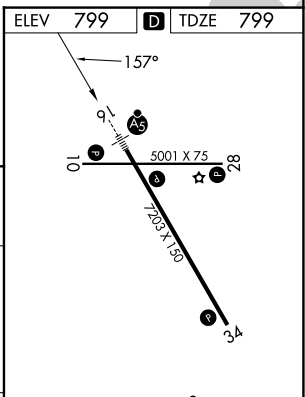
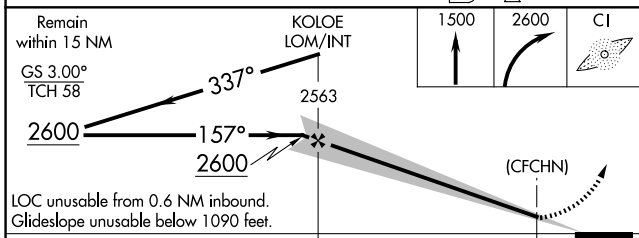
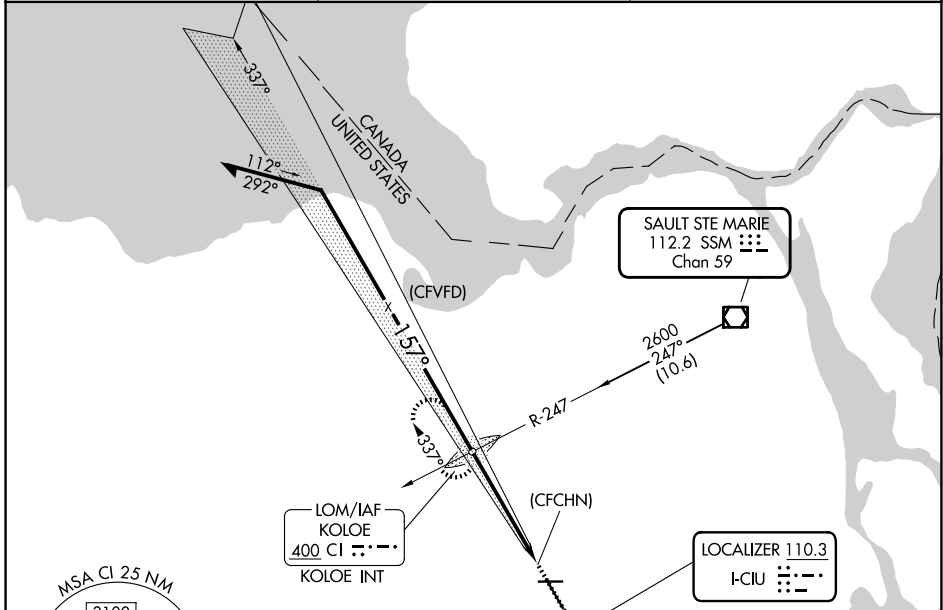
ADF required.

▲ Autopilot coupled approach NA below 1380.
▲NA For inop ALS, increase S-ILS 16 visibility to 7/8 SM all Cats and S-LOC 16 Cat C/D/E to 1 SM.

MALSRL


MISSED APPROACH: Climb to 1500 then climbing right turn to 2600 direct KOLOE LOM/INT and hold, continue climb-in-hold to 2600.

AWOS-3PT 127.575	TORONTO CENTER 132.65 344.5	UNICOM 123.0 (CTAF) 0
----------------------------	---------------------------------------	---------------------------------



CATEGORY	A	B	C	D	E
S-ILS 16	1090-1/2 291 (300-1/2)				
S-LOC 16	1160-1/2	361 (400-1/2)	1160-5/8	361 (400-5/8)	
CIRCLING	1260-1	461 (500-1)	1260-1 1/2	1360-2	1380-2
			461 (500-1 1/2)	561 (600-2)	581 (600-2)

ELEV	799	TDZE	799
REIL Rwy 10, 28 and 34			
MRL Rwy 10-28			
HIRL Rwy 16-34			
FAF to MAP	4.7 NM		
Knots	60	90	120 150 180
Min:Sec	4:42	3:08	2:21 1:53 1:34

EC-1, 11 JUN 2026 to 09 JUL 2026

EC-1, 11 JUN 2026 to 09 JUL 2026