

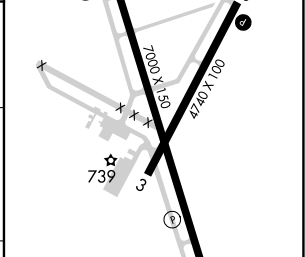
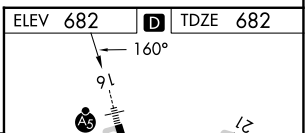
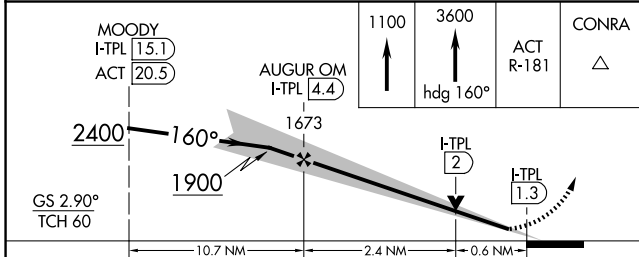
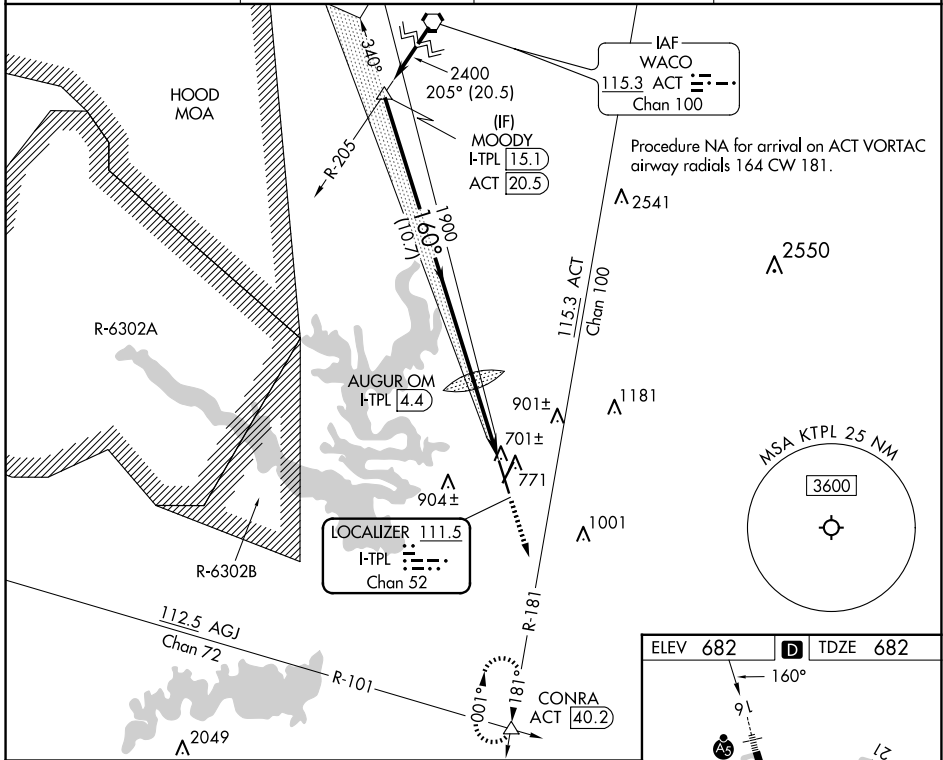
LOC/DME I-TPL 111.5 Chan 52	APP CRS 160°	Rwy Idg 7000 TDZE 682 Apt Elev 682
--	------------------------	---

ILS or LOC RWY 16

DRAUGHON-MILLER CENTRAL TEXAS RGNL (T'PL)

<p>⚠ Autopilot coupled approach NA below 990. ⚠ NA For inop ALS, increase S-LOC 16 Cats C/D visibility to 1 SM.</p>	<p>MALSR </p>	<p>MISSED APPROACH: Climb to 1100 then continue climb to 3600 on heading 160° and on ACT VORTAC R-181 to CONRA INT/ACT 40.2 DME and hold, continue climb-in-hold to 3600.</p>
---	--------------------------	--

AWOS-3PT 134.975	GRAY APP CON 120.075 370.0	CINC DEL 125.9	UNICOM 123.0 (CTAF) 0
----------------------------	--------------------------------------	--------------------------	---------------------------------



CATEGORY	A	B	C	D
S-ILS 16		882-½	200 (200-½)	
S-LOC 16		980-½	298 (300-½)	
C CIRCLING	1120-1 438 (500-1)	1180-1 498 (500-1)	1280-1½ 598 (600-1½)	1420-2¼ 738 (800-2¼)

MIRL Rwy 3-21
MIRL Rwy 16-34 **0**

FAF to MAP 3 NM

Knots	60	90	120	150	180
Min:Sec	3:00	2:00	1:30	1:12	1:00

SC-3, 11 JUN 2026 to 09 JUL 2026

SC-3, 11 JUN 2026 to 09 JUL 2026