

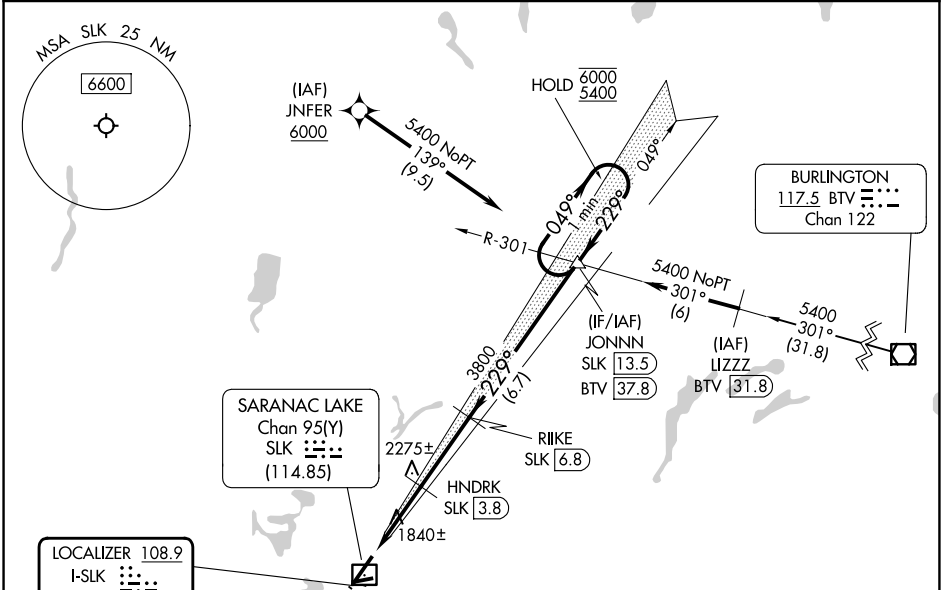
LOC I-SLK <b>108.9</b>	APP CRS <b>229°</b>	Rwy Ldg TDZE Apt Elev	<b>6333</b> <b>1663</b> <b>1663</b>
---------------------------	------------------------	-----------------------------	---

# ILS or LOC RWY 23

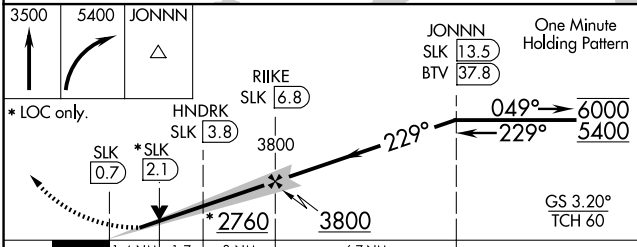
ADIRONDACK RGNL (SLK)

DME required. RNAV 1-GPS required.	MALSR 	MISSED APPROACH: Climb to 3500 then climbing right turn to 5400 direct JONNN and hold.
 Circling Rwy 5, 9, 27 NA at night. DME from SLK DME. Simultaneous reception of I-SLK and SLK DME required. LOC only Rwy 23 helicopter visibility reduction below 3/4 SM NA. For inop ALS, increase S-LOC 23 Cat A/B visibility to 1 SM.		

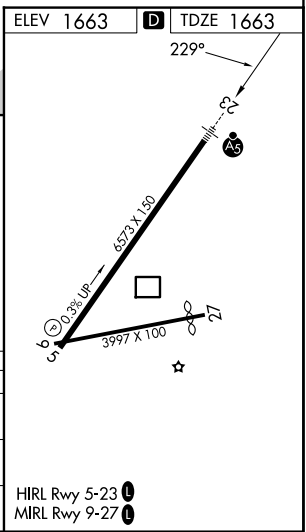
ASOS <b>124.175</b>	BOSTON CENTER <b>120.35 342.25</b>	UNICOM <b>123.0 (CTAF)</b>
------------------------	---------------------------------------	-------------------------------



ELEV 1663	TDZE 1663
-----------	-----------



CATEGORY	A	B	C	D
S-ILS 23		1863-1/2	200 (200-1/2)	
S-LOC 23	2200-3/4	537 (600-3/4)	2200-1	537 (600-1)
CIRCLING	2500-1 1/4 837 (900-1 1/4)	2660-1 1/2 997 (1000-1 1/2)	2660-3 997 (1000-3)	2700-3 1037 (1100-3)



NE-2, 11 JUN 2026 to 09 JUL 2026

NE-2, 11 JUN 2026 to 09 JUL 2026