

WAAS CH 69401 W17A	APP CRS 175°	Rwy Ldg 6002 TDZE 541 Apt Elev 548
--	------------------------	---

RNAV (GPS) RWY 17

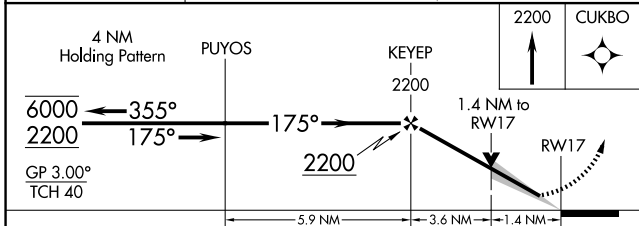
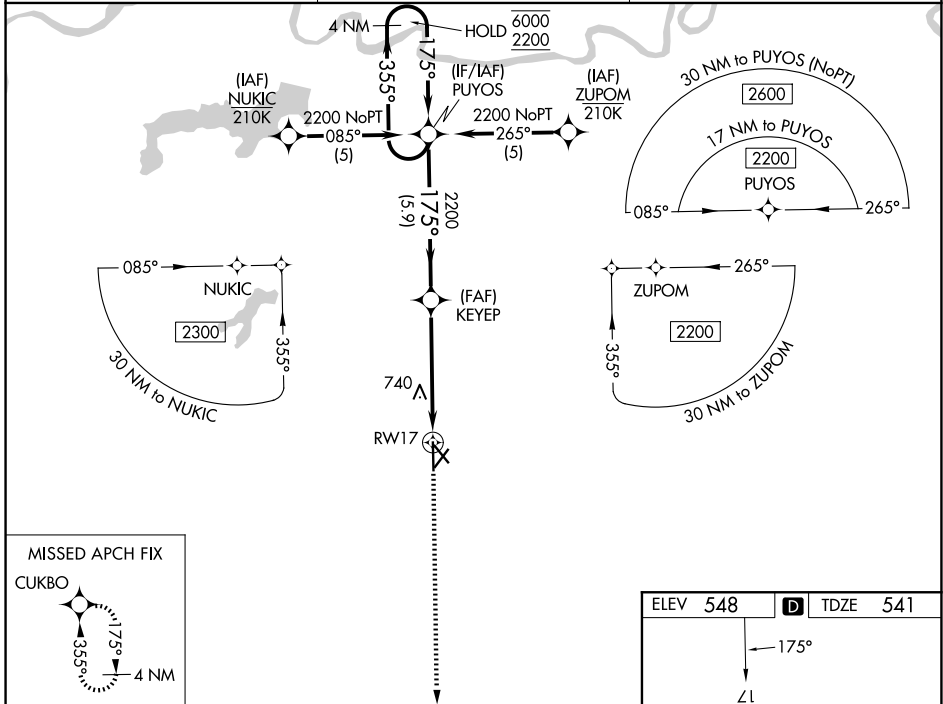
COX FLD (PRX)

RNP APCH - GPS.

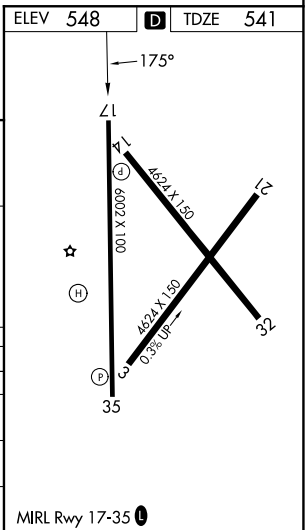
⚠ Baro-VNAV and VDP NA when using SLR altimeter setting. For uncompensated Baro-VNAV systems, LNAV/VNAV NA below -8°C or above 54°C. When local altimeter setting not received, use SLR altimeter setting and increase LPV DA to 868 feet and all visibilities ¼ SM. Increase LNAV/VNAV DA to 1016 feet and all visibilities ¼ SM. Increase all MDAs 80 feet and LNAV visibility Cat C/D ¼ SM, and Circling visibility Cat C/D ¼ SM.

MISSED APPROACH:
Climb to 2200 direct CUKBO and hold.

AWOS-3PT 119.675	FORT WORTH CENTER 124.875 370.95	UNICOM 122.975 (CTAF)
----------------------------	--	---------------------------------



CATEGORY	A	B	C	D
LPV DA		791- ³ / ₄	250 (300- ³ / ₄)	
LNAV/VNAV DA		939-1 ¹ / ₈	398 (400-1 ¹ / ₈)	
LNAV MDA	1040-1	499 (500-1)	1040-1 ³ / ₈	499 (500-1 ³ / ₈)
CIRCLING	1060-1	512 (600-1)	1100-1 ¹ / ₂ 552 (600-1 ¹ / ₂)	1220-2 ¹ / ₄ 672 (700-2 ¹ / ₄)



SC-2, 11 JUN 2026 to 09 JUL 2026

SC-2, 11 JUN 2026 to 09 JUL 2026