

|  |                        |                             |   |
|--|------------------------|-----------------------------|---|
| WAAS<br>CH <b>40228</b><br><b>W16A</b> | APP CRS<br><b>162°</b> | Rwy Idg<br>TDZE<br>Apf Elev | <b>7000</b><br><b>4202</b><br><b>4252</b> |
|--|------------------------|-----------------------------|---|

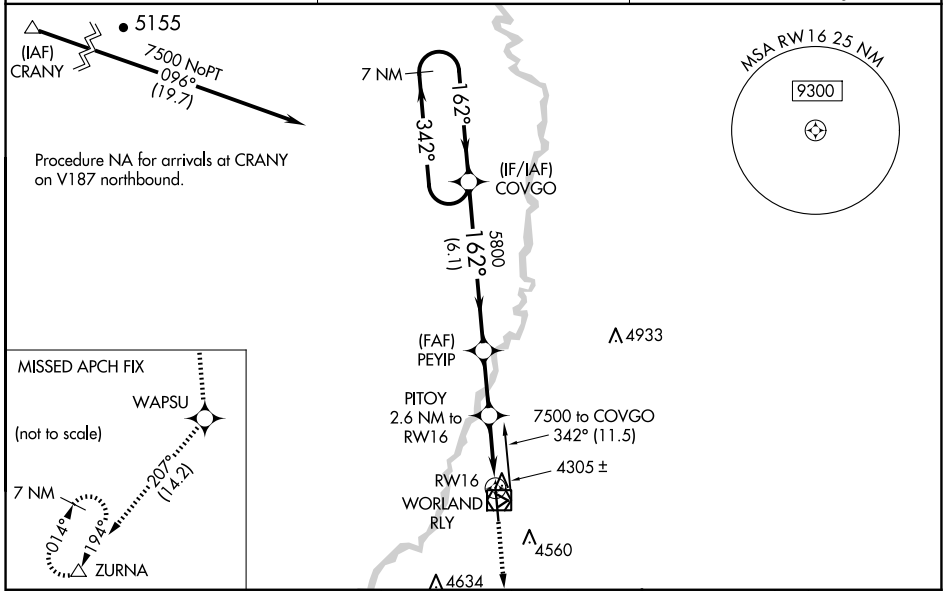
# RNAV (GPS) RWY 16

WORLAND MUNI (WRL)

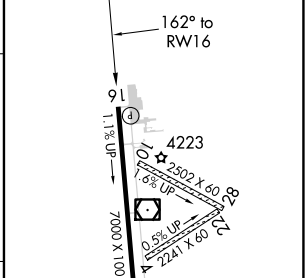
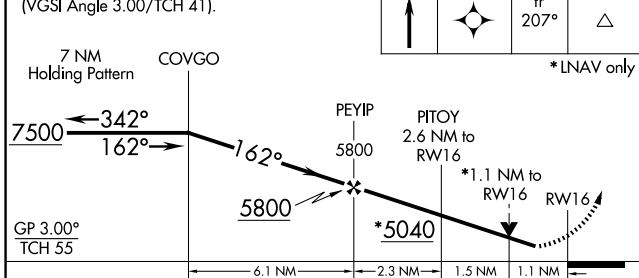
**⚠** For uncompensated Baro-VNAV systems, LNAV/VNAV NA below -32°C (-25°F) or above 17°C (62°F). DME/DME RNP-0.3 NA. VDP and Baro-VNAV NA with Greybull altimeter setting. When local altimeter setting not received, use Greybull altimeter setting: increase LPV DA to 4574 feet, LNAV/VNAV DA to 4616 feet, and all MDA's 140 feet; increase LPV, LNAV/VNAV and LNAV all Cats, and Circling Cat C/D visibilities ½ SM. Helicopter visibility reduction below ¾ SM NA.

**MISSED APPROACH:** Climb to 9600 direct WAPSU and on track 207° to ZURNA and hold, continue climb-in-hold to 9600.

|                        |   |                                  |
|------------------------|---|----------------------------------|
| ASOS<br><b>135.475</b> | SALT LAKE CENTER<br><b>133.25 285.6</b> | UNICOM<br><b>123.05 (CTAF) 0</b> |
|------------------------|---|----------------------------------|



|  |            |       |           |           |
|--|------------|-------|-----------|-----------|
| VGSI and RNAV glidepath not coincident (VGSI Angle 3.00/TCH 41). | 9600 WAPSU | ZURNA | ELEV 4252 | TDZE 4202 |
|--|------------|-------|-----------|-----------|



| CATEGORY     | A                  | B | C   | D |
|--------------|--------------------|---|---|---|
| LPV DA       | 4452-¾             |   | 250 (200-¾)                               |   |
| LNAV/VNAV DA | 4494-⅞             |   | 292 (300-⅞)                               |   |
| LNAV MDA     | 4560-1 358 (400-1) |   | 4560-1½ 358 (400-1½)                      |   |
| CIRCLING     | 4920-1 668 (700-1) |   | 4920-1¾ 668 (700-1¾) 5020-2½ 768 (800-2½) |   |

REIL Rwy 16 and 34  
MIRL Rwy 16-34

NW-1, 11 JUN 2026 to 09 JUL 2026

NW-1, 11 JUN 2026 to 09 JUL 2026