

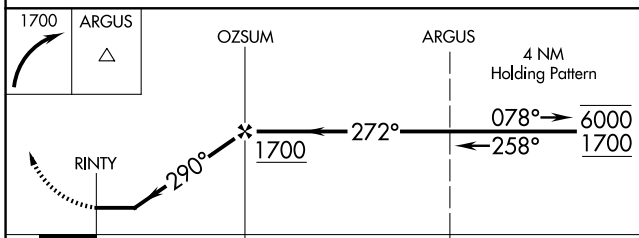
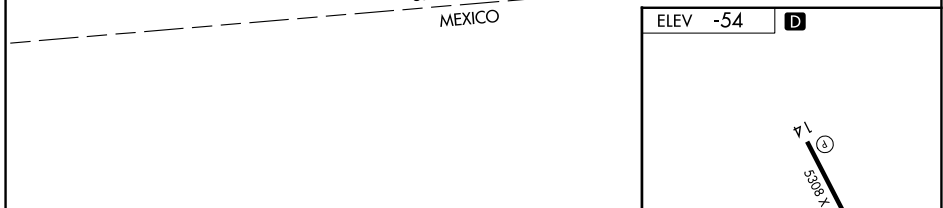
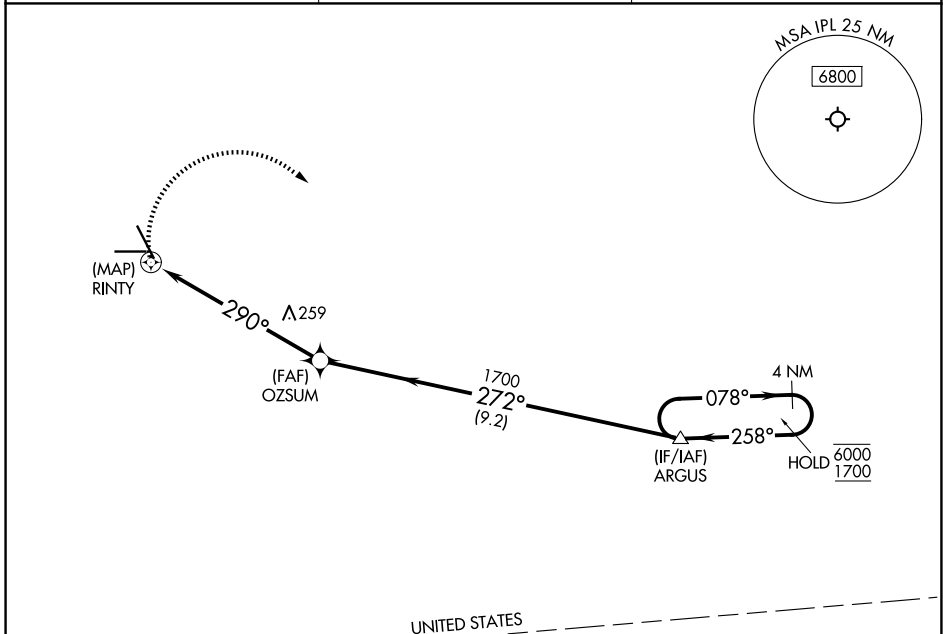
APP CRS	Rwy Ldg	N/A
290°	TDZE	N/A
	Apt Elev	-54

RNAV (GPS)-B

IMPERIAL COUNTY (IPL)

RNP APCH - GPS.	MISSED APPROACH: Climbing right turn to 1700 direct ARGUS and hold.
▼ When local altimeter setting not received, procedure NA. Circling Rwy 32 NA at night.	

ASOS 132.175	YUMA CERAP 132.275 292.2	UNICOM 122.7 (CTAF) 0
------------------------	------------------------------------	---------------------------------



CATEGORY	A	B	C	D
CIRCLING	560-1	614 (700-1)	560-1¾ 614 (700-1¾)	560-2 614 (700-2)

ELEV -54 **D**

MIRL Rwy 8-26 and 14-32 **0**

SW-3, 11 JUN 2026 to 09 JUL 2026

SW-3, 11 JUN 2026 to 09 JUL 2026