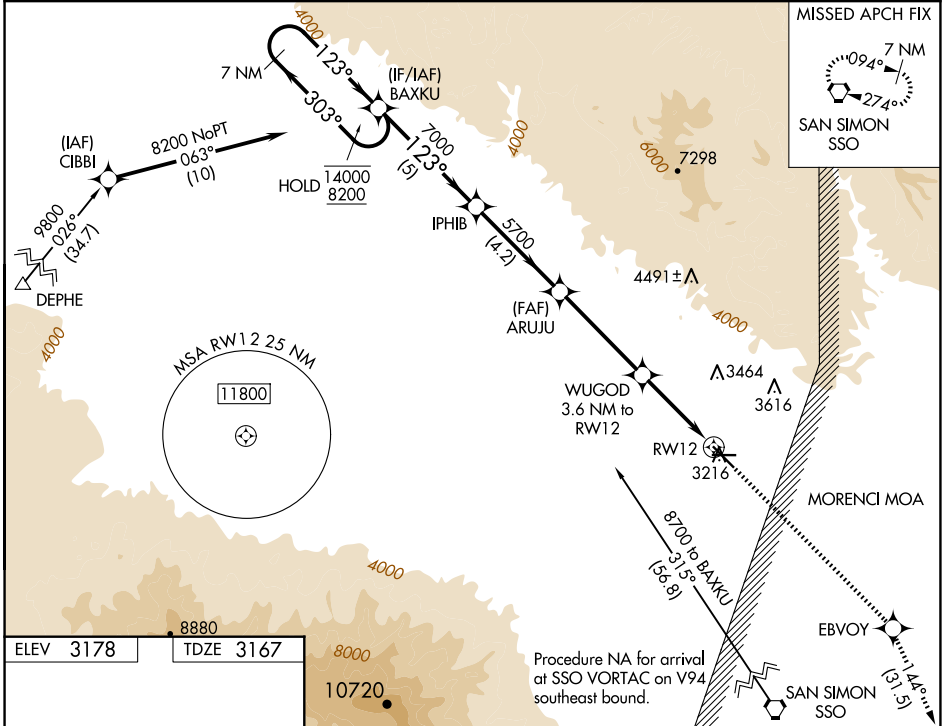


WAAS CH 69516 W12A	APP CRS 123°	Rwy Idg TDZE Apt Elev	6007 3167 3178
--	------------------------	-----------------------------	---

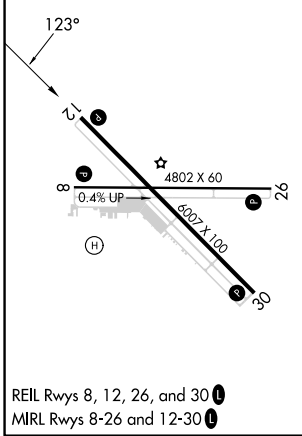
RNAV (GPS) RWY 12

SAFFORD RGNL/1LT DUANE SPALSBURY FLD (SAD)

RNP APCH - GPS.		ALBUQUERQUE CENTER 134.45 327.15		UNICOM 122.8 (CTAF) 0	
<p>⚠ Circling to Rwy 8 NA at night. Circling NA northeast of Rwy 12 and north of Rwy 26. For uncompensated Baro-VNAV systems, LNAV/VNAV NA below -6°C or above 54°C.</p>		<p>MISSED APPROACH: Climb to 10000 direct EBVOY and on track 144° to SSO VORTAC and hold.</p>			



ELEV 3178	TDZE 3167
-----------	-----------



7 NM Holding Pattern		BAXKU		IPHIB		ARUJU		WUGOD		EBVOY		SSO	
14000 ← 303°		8200 123° →		7000		5700		3.6 NM to RWY 12		144°		31.5	
GP 3.00°		TCH 40		5700		4360		3.6 NM to RWY 12		1 NM to RWY 12		RWY 12	
		5 NM		4.2 NM		4.2 NM		2.7 NM		1 NM			
CATEGORY		A		B		C		D					
LPV DA				3417-3/4		250 (300-3/4)							
LNAV/VNAV DA				3417-3/4		250 (300-3/4)							
LNAV MDA				3520-1		353 (400-1)							
CIRCLING		3580-1 402 (500-1)		3640-1 462 (500-1)		3640-1 1/2 462 (500-1 1/2)		3900-2 1/4 722 (800-2 1/4)					

SAFFORD, ARIZONA
Amdt 1 30NOV23

SAFFORD RGNL/1LT DUANE SPALSBURY FLD (SAD)
32°51'N-109°38'W
RNAV (GPS) RWY 12

SW-4, 11 JUN 2026 to 09 JUL 2026

SW-4, 11 JUN 2026 to 09 JUL 2026