


LOC/DME I-LSI <b>108.5</b> Chan <b>22</b>	APP CRS <b>084°</b>	Rwy Ldg TDZE Apt Elev	<b>5646</b> <b>545</b> <b>545</b>
---	------------------------	-----------------------------	---

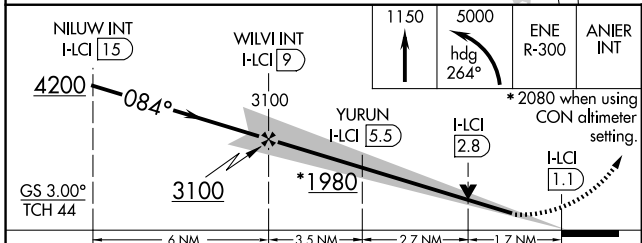
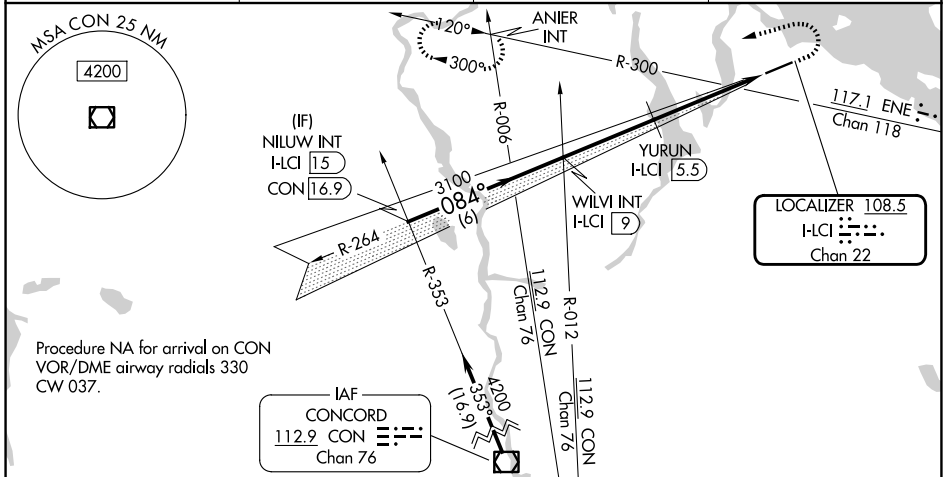
# ILS or LOC RWY 8

LACONIA MUNI (LCI)

**⚠** Circling Rwy 26 NA at night. Circling NA south of Rwy 8-26. VDP NA when using CON altimeter setting. Inop table does not apply to S-LOC 8 Cats C/D. Helicopter visibility reduction below 3/4 SM NA. For inop ALS, increase S-ILS 8 visibility to 1 1/4 SM, YURUN fix minimums increase S-LOC 8 Cats A/B visibility to 1 SM and Cats C/D visibility to 1 3/4 SM. When local altimeter setting not received, use CON altimeter setting and increase S-ILS 8 DA to 1030 feet and visibility 1/2 SM. Increase S-ILS 8# DA to 982 feet. Increase all MDAs 100 feet. YURUN fix minimums: increase all MDAs 100 feet S-LOC 8 visibilities Cats C/D 1/2 SM and Circling visibilities Cats A/B/C 1/4 SM.

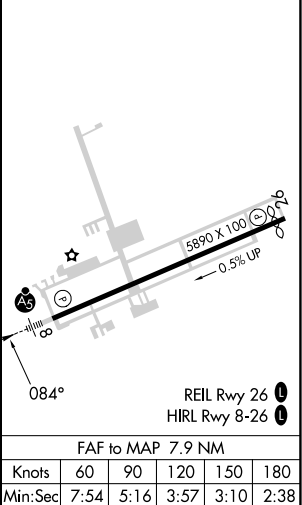
**MALSR**  
  
 MISSED APPROACH: Climb to 1150 then climbing left turn to 5000 on heading 264° and ENE VOR/DME R-300 to ANIER INT and hold, continue climb-in-hold to 5000.  
 # Missed approach requires minimum climb of 295 feet per NM to 1500.

AWOS-3PT <b>133.525</b>	BOSTON APP CON <b>134.75 254.25</b>	CLNC DEL <b>119.85</b>	UNICOM <b>123.0 (CTAF) 0</b>
----------------------------	--	---------------------------	---------------------------------



ELEV 545	<b>D</b>	TDZE 545
----------	----------	----------

CATEGORY	A	B	C	D
S-ILS 8#		901-3/4	356 (400-3/4)	
S-ILS 8		949-3/4	404 (500-3/4)	
S-LOC 8	1980-3/4 1435 (1500-3/4)	1980-1 1435 (1500-1)	1980-3	1435 (1500-3)
CIRCLING	1980-1 1/4 1435 (1500-1 1/4)	1980-1 1/2 1435 (1500-1 1/2)	1980-3	1435 (1500-3)
YURUN FIX MINIMUMS				
S-LOC 8	1120-3/4	575 (600-3/4)	1120-1 1/4	575 (600-1 1/4)
CIRCLING	1320-1	775 (800-1)	1320-2 1/4 775 (800-2 1/4)	1480-3 935 (1000-3)



FAF to MAP 7.9 NM					
Knots	60	90	120	150	180
Min:Sec	7:54	5:16	3:57	3:10	2:38

NE-1, 11 JUN 2026 to 09 JUL 2026

NE-1, 11 JUN 2026 to 09 JUL 2026