

LOC I-ITH 108.7	APP CRS 325°	Rwy Ldg 6602
		TDZE 1099
		Apt Elev 1099

ILS or LOC RWY 32

ITHACA TOMPKINS INTL (ITH)

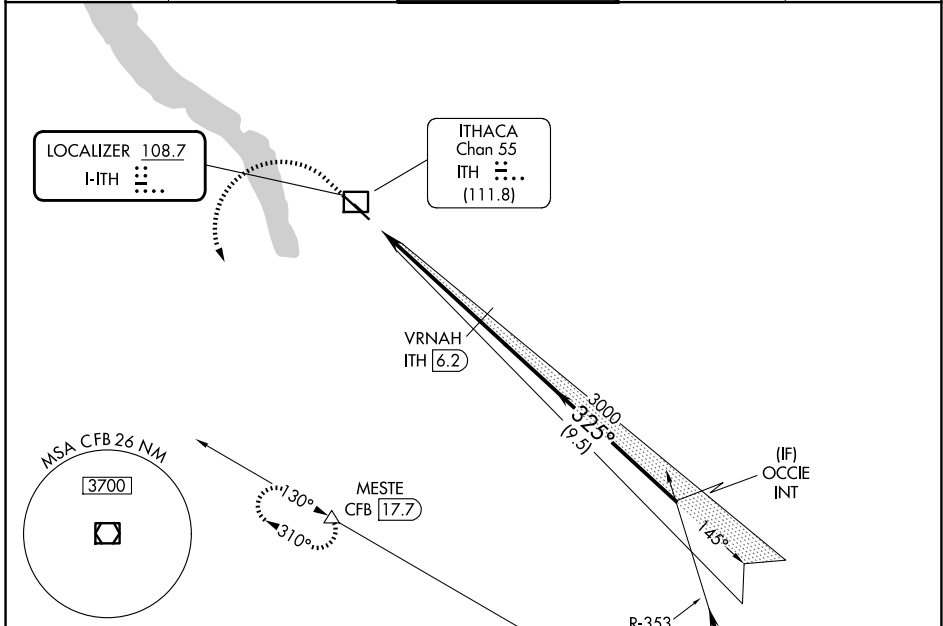
DME required.

Circling NA to Rwy 15 and 33. DME from ITH DME.
 DME use requires simultaneous reception of I-ITH and ITH DME.
 -18°C

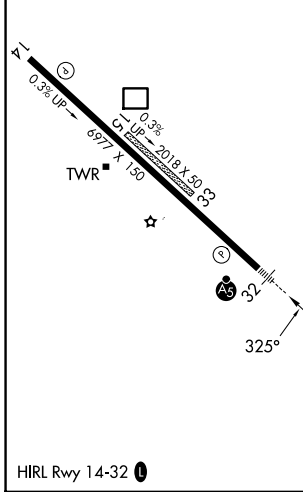
MALSR

MISSED APPROACH: Climb to 2600 then climbing left turn to 4000 on heading 180° and CFB VOR/DME R-310 to MESTE/CFB VOR/DME 17.7 DME and hold.

ATIS 125.175	ELMIRA APP CON★ 124.3 257.8	ITHACA TOWER★ 119.6 (CTAF)	GND CON 121.8	UNICOM 122.95
------------------------	---------------------------------------	--------------------------------------	-------------------------	-------------------------

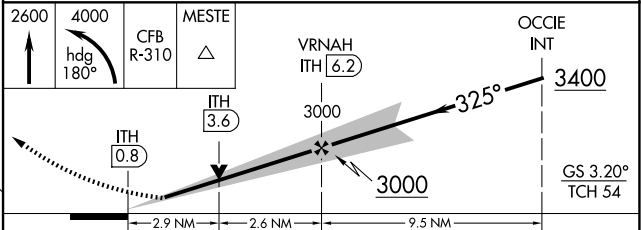


ELEV 1099	D	TDZE 1099
-----------	----------	-----------



Procedure NA for arrival on CFB VOR/DME airway radials 310 CW 015 and V374 northwest bound.

IAF BINGHAMTON 112.2 CFB Chan 59



CATEGORY	A	B	C	D
S-ILS 32	1349/24		250 (300-½)	
S-LOC 32	2140/40 1041 (1100-¾)	2140/55 1041 (1100-1)	2140-2½	1041 (1100-2½)
CIRCLING	2140-1¼ 1041 (1100-1¼)	2140-1½ 1041 (1100-½)	2140-3 1041 (1100-3)	2440-3 1341 (1400-3)

NE-2, 11 JUN 2026 to 09 JUL 2026

NE-2, 11 JUN 2026 to 09 JUL 2026