

# HI-VOR or TACAN RWY 17R

[USAF] INFINITY ONE OKLAHOMA SPACEPORT (KCSM)

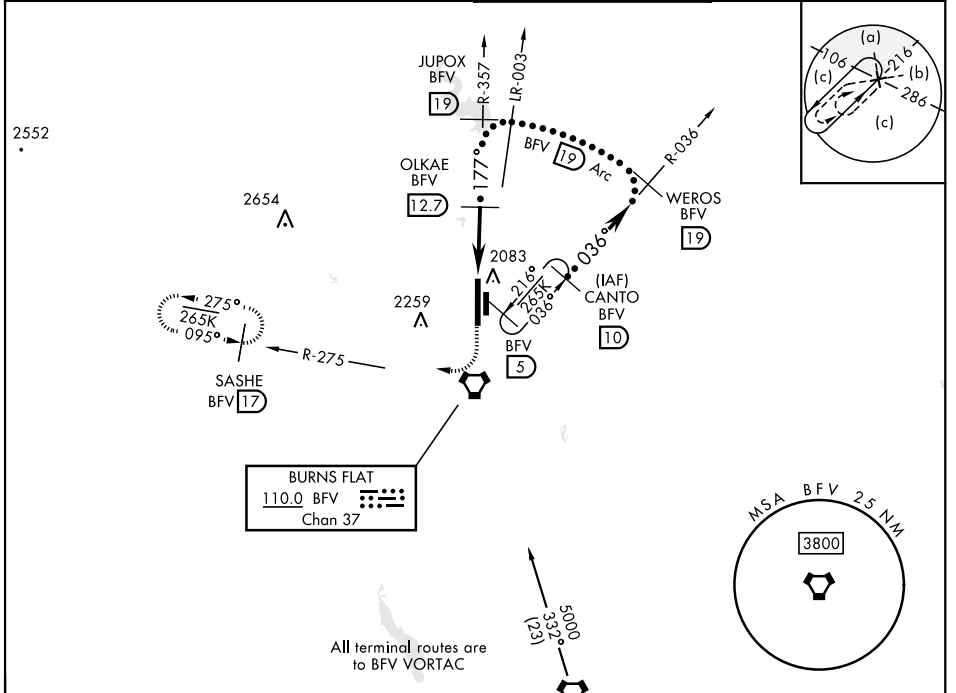
VORTAC BFV <b>110.0</b> Chan <b>37</b>	APCH CRS <b>177°</b>	Rwy Idg <b>13,502</b> TDZE <b>1922</b> Arprt Elev <b>1922</b>
--	-------------------------	---

DME required

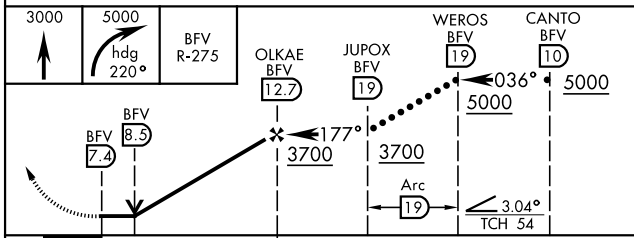
\* Circling not authorized E of Rwy 17R-35L.

MISSED APPROACH: Climb to 3000 then climbing right turn to 5000 via heading 220° and BFV R-275 to SASHE/17 DME and hold.

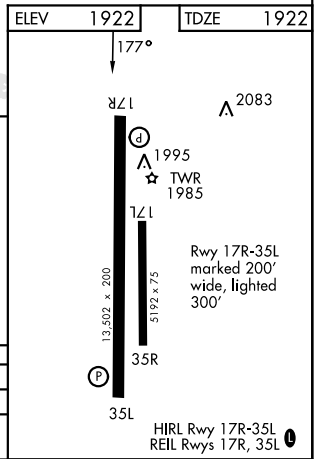
ASOS <b>118.45</b>	FORT WORTH CENTER <b>128.4 269.375</b>	TOWER <b>119.6 (CTAF) 0 256.9</b>	GND CON <b>121.7 239.0</b>
-----------------------	---	--------------------------------------	-------------------------------



EMERG SAFE ALT 100 NM 5000



CATEGORY	C	D	E
S-17R	2340-1¼	418 (500-1¼)	
CIRCLING*	2380-1½ 458 (500-1½)	2620-2¼ 698 (700-2¼)	2620-2½ 698 (700-2½)



BURNS FLAT, OKLAHOMA

35° 20' N - 99° 12' W

INFINITY ONE OKLAHOMA SPACEPORT (KCSM)

Amtd 3 25FEB21

# HI-VOR or TACAN RWY 17R

SC-1, 11 JUN 2026 to 09 JUL 2026

SC-1, 11 JUN 2026 to 09 JUL 2026