

LOC/DME I-CHO 111.7 Chan 54	APP CRS 030°	Rwy Ldg 6801 TDZE 640 Apt Elev 640
--	------------------------	--

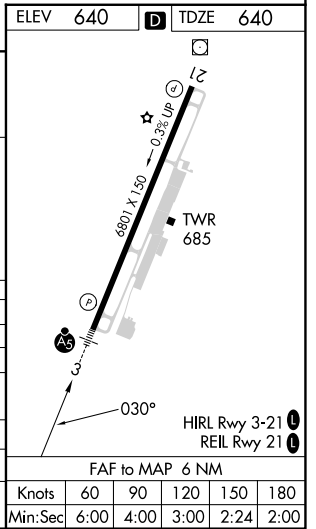
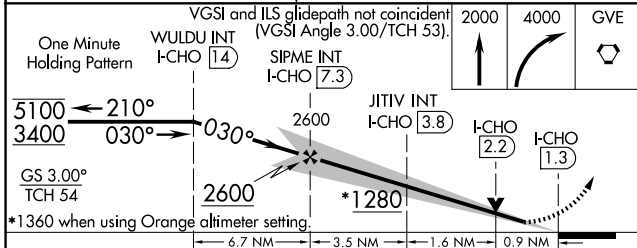
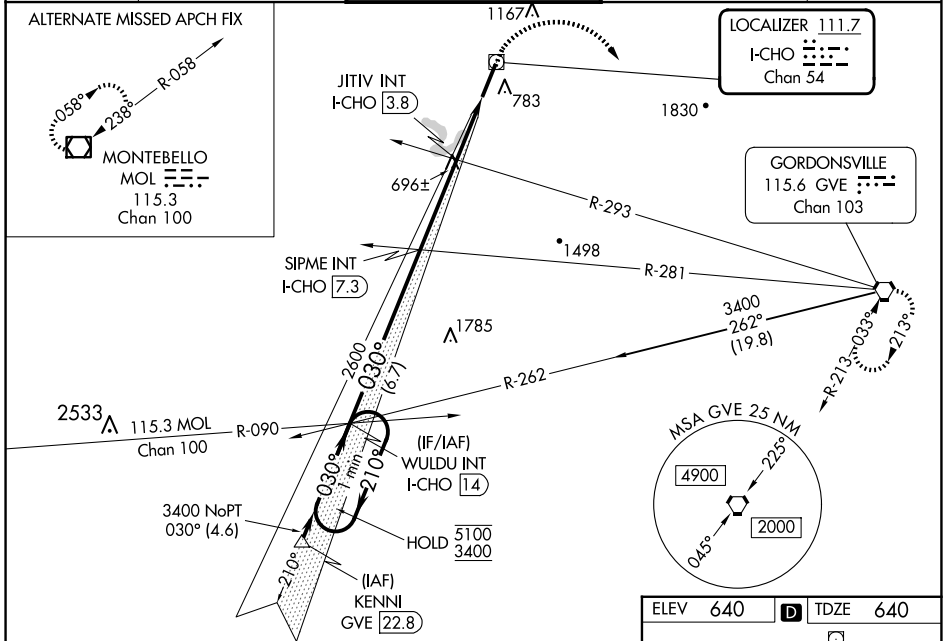
ILS or LOC RWY 3

CHARLOTTESVILLE-ALBEMARLE (CHO)

VDP NA when using Orange altimeter setting. When local altimeter setting not received, use Orange altimeter setting and increase S-ILS 3 DA to 911 and all MDA 80 feet;
▲ increase S-LOC 3 JITIV fix minimums Cats C/D, S-LOC 3 Cats C/D, Circling Cats C/D, and JITIV fix minimums Circling Cats C/D visibility 1/2 SM. For Inop ALS when using Orange altimeter setting, increase S-ILS 3 all Cats visibility to 2/3 SM, S-LOC 3 Cats C/D visibility to 2 SM, and S-LOC 3 JITIV fix minimums Cats C/D visibility to 1 1/2 SM.

MALS R **MISSED APPROACH:** Climb to 2000 then climbing right turn to 4000 direct GVE VORTAC and hold.

ATIS 118.425	POTOMAC APP CON 132.85 323.125	CHARLOTTESVILLE TOWER ★ 124.5 (CTAF) 338.275	GND CON 121.9 338.275	UNICOM 122.95
------------------------	--	--	---------------------------------	-------------------------



CATEGORY	A	B	C	D
S-ILS 3		840-1/2	200 (200-1/2)	
S-LOC 3	1280-1/2	640 (700-1/2)	1280-1 3/8	640 (700-1 3/8)
C CIRCLING	1280-1	640 (700-1)	1500-2 1/2 860 (900-2 1/2)	1500-2 3/4 860 (900-2 3/4)
JITIV FIX MINIMUMS (DUAL VOR RECEIVERS OR DME REQUIRED)				
S-LOC 3	980-1/2	340 (400-1/2)	980-5/8	340 (400-5/8)
C CIRCLING	1100-1	460 (500-1)	1500-2 1/2 860 (900-2 1/2)	1500-2 3/4 860 (900-2 3/4)

NE-3, 11 JUN 2026 to 09 JUL 2026

NE-3, 11 JUN 2026 to 09 JUL 2026