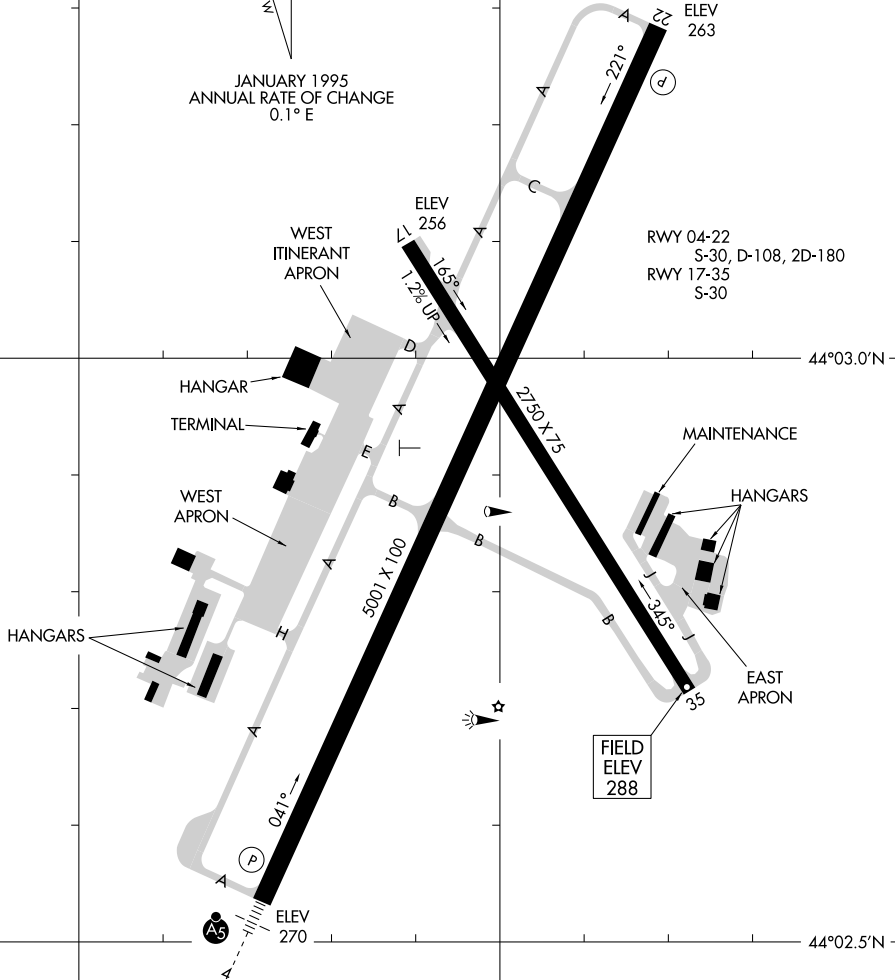


AWOS-3PT
 118.025
 CLNC DEL
 124.05
 CTAF/UNICOM
 122.8

VAR 17° W
 JANUARY 1995
 ANNUAL RATE OF CHANGE
 0.1° E



RWY 04-22
 S-30, D-108, 2D-180
 RWY 17-35
 S-30

FIELD
 ELEV
 288

HIRL Rwy 4-22
 MIRL Rwy 17-35
 REIL Rwy 22

NE-1, 11 JUN 2026 to 09 JUL 2026

NE-1, 11 JUN 2026 to 09 JUL 2026