

LOC I-FTY 109.1	APP CRS 085°	Rwy Ldg TDZE 5797 808	Apt Elev 841
---------------------------	------------------------	---	------------------------


ILS or LOC RWY 8

FULTON COUNTY EXEC/CHARLIE BROWN FLD (FTY)

RADAR required to define TALDE.
RADAR required for procedure entry.

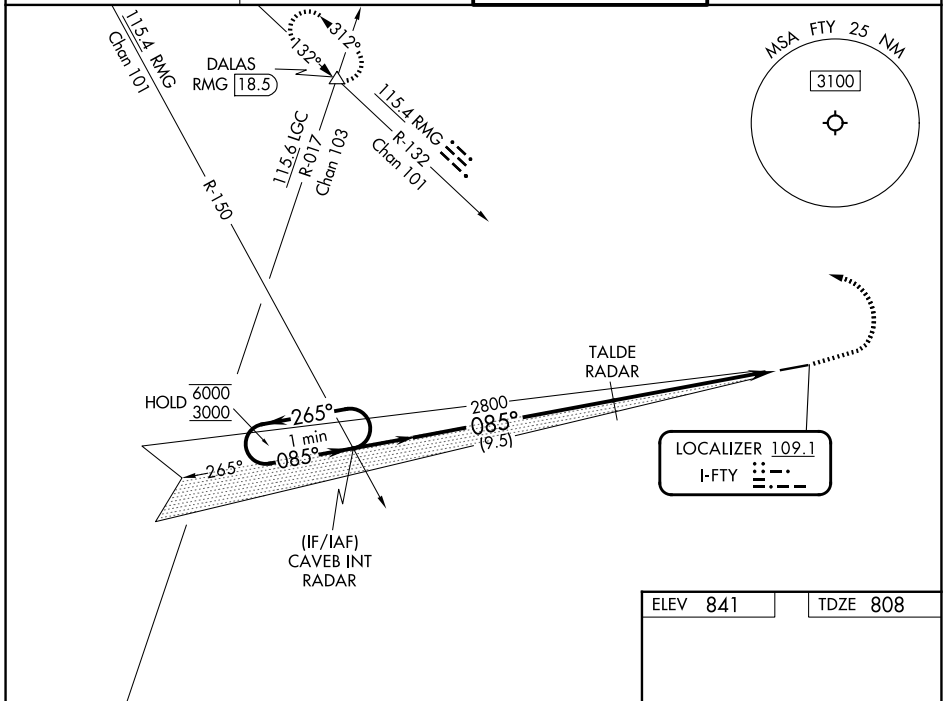
⚠ Rwy 8 helicopter visibility reduction below $\frac{3}{4}$ SM NA. For inop ALS, increase S-LOC 8 Cat A visibility to 1 SM, Cat C/D visibility to $2\frac{1}{2}$ SM. Ridge with trees to 1299' MSL between FAF and runway threshold may be obscured by clouds even with airfield ceiling at or above procedure minimums.

MALSR



MISSED APPROACH: Climb to 1800 then climbing left turn to 4000 on heading 290° and RMG R-132 to DALAS INT/ RMG VORTAC 18.5 DME and hold.

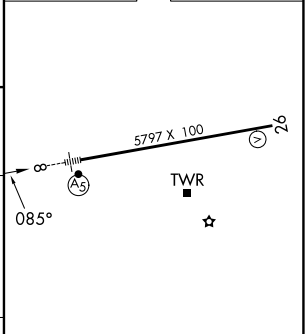
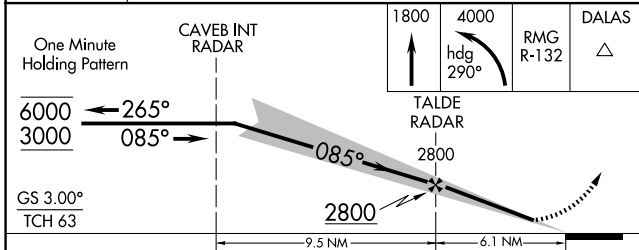
ATIS 120.175	ATLANTA APP CON 121.0 268.7	FULTON COUNTY TOWER 118.45 257.8	GND CON 121.7 348.6
------------------------	---------------------------------------	--	-------------------------------



SE-4, 11 JUN 2026 to 09 JUL 2026

SE-4, 11 JUN 2026 to 09 JUL 2026

ELEV 841	TDZE 808
----------	----------



CATEGORY	A	B	C	D
S-ILS 8	1058- $\frac{1}{2}$ 250 (300- $\frac{1}{2}$)			
S-LOC 8	1640- $\frac{3}{4}$	832 (800- $\frac{3}{4}$)	1640-1 $\frac{7}{8}$	832 (800-1 $\frac{7}{8}$)
CIRCLING	1640-1 799 (800-1)	1640-1 $\frac{1}{4}$ 799 (800-1 $\frac{1}{4}$)	1740-2 $\frac{3}{4}$ 899 (900-2 $\frac{3}{4}$)	1740-3 899 (900-3)

HIRL Rwy 8-26
REIL Rwy 26

FAF to MAP 6.1 NM					
Knots	60	90	120	150	180
Min:Sec	6:06	4:04	3:03	2:26	2:02