

LOC I-PWA <b>110.15</b>	APP CRS <b>175°</b>	Rwy Ldg TDZE Apt Elev <b>6844</b> <b>1291</b> <b>1300</b>
----------------------------	------------------------	--

# ILS or LOC RWY 17L

WILEY POST (PWA)

DME or RADAR required.

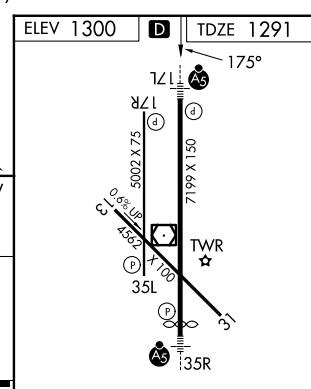
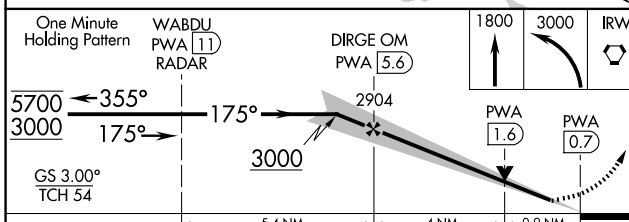
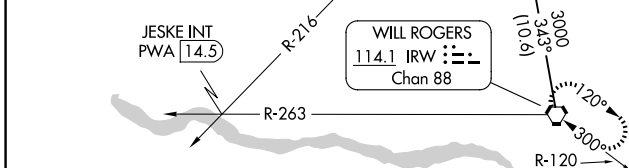
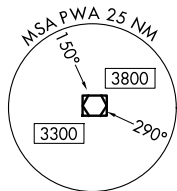
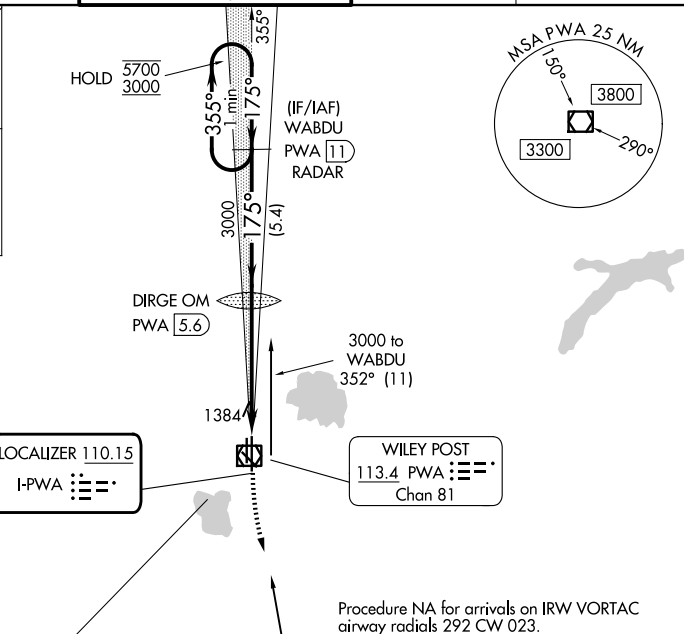
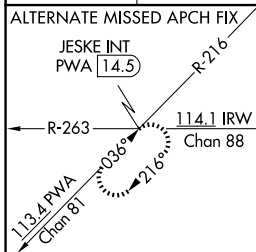


MALSR



MISSED APPROACH: Climb to 1800 then climbing left turn to 3000 direct IRW VORTAC and hold.

ATIS <b>128.725</b>	OKE CITY APP CON <b>124.6 266.8</b>	WILEY POST TOWER ★ <b>126.9 (CTAF) 0 306.9</b>	GND CON <b>121.7</b>	UNICOM <b>122.95</b>
------------------------	--	---	-------------------------	-------------------------



CATEGORY	A	B	C	D
S-ILS 17L		1491-1/2	200 (200-1/2)	
S-LOC 17L	1640-1/2	349 (400-1/2)	1640-5/8	349 (400-5/8)
CIRCLING	1780-1	480 (500-1)	1880-1/2 580 (600-1/2)	1880-2 580 (600-2)

HIRL Rwy 17L-35R	
REIL Rwy 17R and 35L	
MIRL Rwy 13-31 and 17R-35L	
FAF to MAP 4.9 NM	
Knots	60 90 120 150 180
Min:Sec	4:54 3:16 2:27 1:58 1:38

SC-1, 11 JUN 2026 to 09 JUL 2026

SC-1, 11 JUN 2026 to 09 JUL 2026