

LOC/DME I-JHW 109.7 Chan 34	APP CRS 249°	Rwy Ldg TDZE Apt Elev	5300 1721 1723
---	------------------------	-----------------------------	---

ILS or LOC RWY 25

CHAUTAUQUA COUNTY/JAMESTOWN (JHW)

NA Autopilot coupled approach NA below 2420. Circling to Rwy 13/31 NA at night. VDP NA when using DKK altimeter setting. When local altimeter setting not received, use DKK altimeter setting and increase S-ILS 25 DA to 2166 feet and all visibilities $\frac{3}{8}$ SM, increase all MDA 200 feet, increase S-LOC 25 visibilities Cat A/B $\frac{1}{4}$ SM, Cat C/D $\frac{1}{2}$ SM, increase Circling Cat C/D $\frac{1}{2}$ SM, DIPRE fix minimums increase S-LOC 25 visibilities Cat C/D $\frac{1}{2}$ SM, Circling visibilities Cat C $\frac{1}{2}$ SM, Cat D $\frac{3}{4}$ SM.

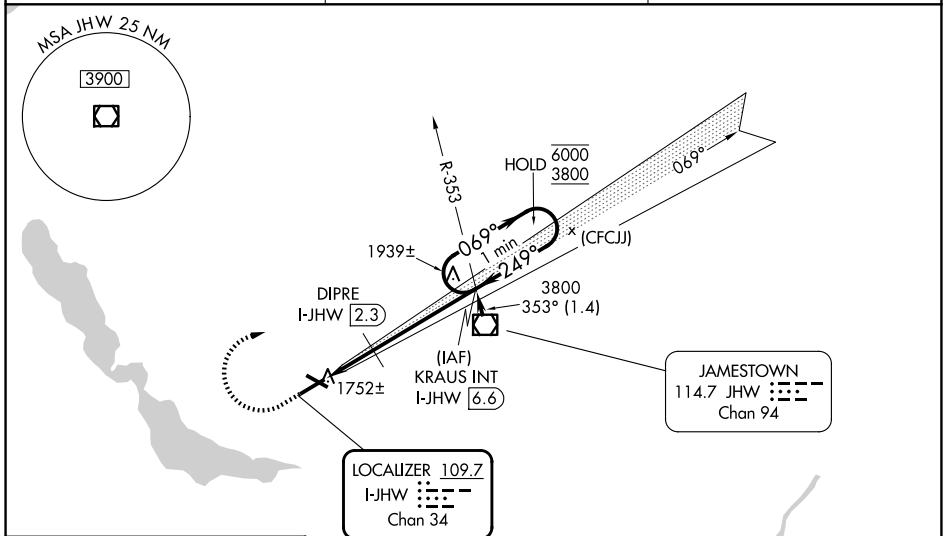
MALS

MISSED APPROACH: Climb to 2420 then climbing right turn to 3800 on heading 125° and I-JHW localizer course NE (069°) to KRAUS INT/I-JHW 6.6 DME and hold. Continue climb-in-hold.

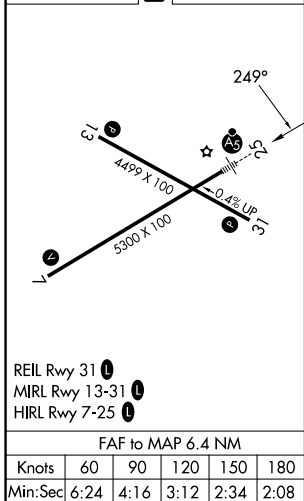
AWOS-3PT
118.425

BUFFALO APP CON *
126.05

UNICOM
122.975 (CTAF) **0**



ELEV 1723 **D** TDZE 1721



2420	3800	I-JHW LOC crs NE (069°)	KRAUS INT	KRAUS INT I-JHW [6.6]	One Minute Holding Pattern
↑	hdg 125°				
		I-JHW [0.2]	I-JHW [1.1]	DIPRE I-JHW [2.3]	3800
					069° → 6000
					← 249° 3800
					GS 3.00° TCH 48
					*2420 when using DKK altimeter setting.
					← 1 NM ← 1.1 NM ← 4.3 NM
CATEGORY	A	B	C	D	
S-ILS 25	1971- $\frac{1}{2}$		250 (300- $\frac{1}{2}$)		
S-LOC 25	2420- $\frac{1}{2}$	699 (700- $\frac{1}{2}$)	2420-1 $\frac{1}{2}$	699 (700-1 $\frac{1}{2}$)	
CIRCLING	2420-1	697 (700-1)	2420-2	2420-2 $\frac{1}{4}$	697 (700-2 $\frac{1}{4}$)
DIPRE FIX MINIMUMS (DME REQUIRED)					
S-LOC 25	2080- $\frac{1}{2}$	359 (400- $\frac{1}{2}$)	2080- $\frac{5}{8}$	359 (400- $\frac{5}{8}$)	
CIRCLING	2200-1	477 (500-1)	2260-1 $\frac{1}{2}$	2340-2	537 (600-1 $\frac{1}{2}$) 617 (700-2)

NE-2, 11 JUN 2026 to 09 JUL 2026

NE-2, 11 JUN 2026 to 09 JUL 2026