

LOC I-OSH 110.5	APP CRS 004°	Rwy Ldg 8002
		TDZE 809
		Apt Elev 809

ILS or LOC RWY 36

WITTMAN RGNL (OSH)

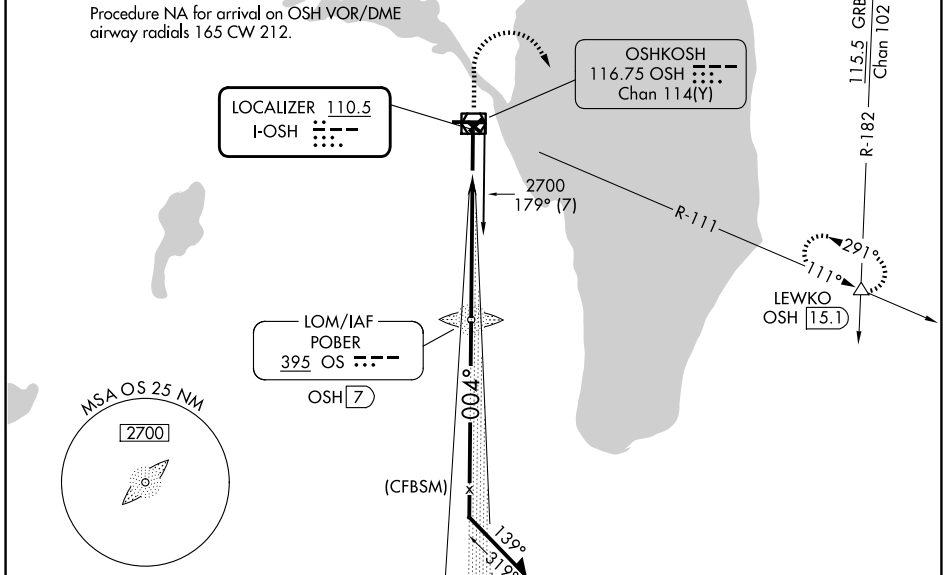
▼ Circling Rwy 5, 13, 23, 31 NA at night. VDP NA when using FLD altimeter setting. DME from OSH VOR/DME. DME use requires simultaneous reception of I-OSH and OSH DME. When local altimeter setting not received, use FLD altimeter setting; increase DA to 1042 feet; increase all MDAs 40 feet and S-LOC 36 Cat C and D visibility to 1¼ SM; increase Circling Cats C and D visibility ¼ SM. *RVR 1800 authorized with use of FD or AP or HUD to DA (NA when using FLD altimeter setting).



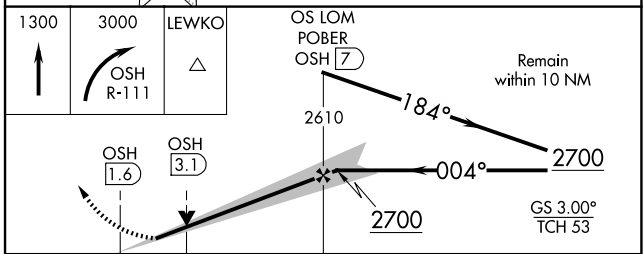
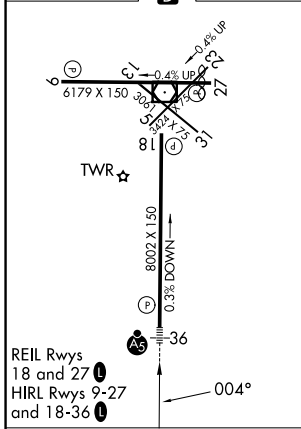
MISSED APPROACH: Climb to 1300 then climbing right turn to 3000 on OSH R-111 to LEWKO INT/OSH 15.1 DME and hold.

ATIS 125.9	MILWAUKEE APP CON 127.0 263.075	OSHKOSH TOWER ★ 118.5 (CTAF) 0 290.9	GND CON 132.3	UNICOM 122.95
----------------------	---	--	-------------------------	-------------------------

Procedure NA for arrival on OSH VOR/DME airway radials 165 CW 212.



ELEV 809	D	TDZE 809
-----------------	----------	-----------------



CATEGORY	A	B	C	D
S-ILS 36 *	1009/24 200 (200-½)			
S-LOC 36	1340/24 531 (600-½)	1340/55 531 (600-1)		
CIRCLING	1340-1 531 (600-1)	1360-1½ 551 (600-½)	1440-2 631 (700-2)	

FAF to MAP 5.4 NM					
Knots	60	90	120	150	180
Min:Sec	5:24	3:36	2:42	2:10	1:48

EC-3, 11 JUN 2026 to 09 JUL 2026

EC-3, 11 JUN 2026 to 09 JUL 2026