

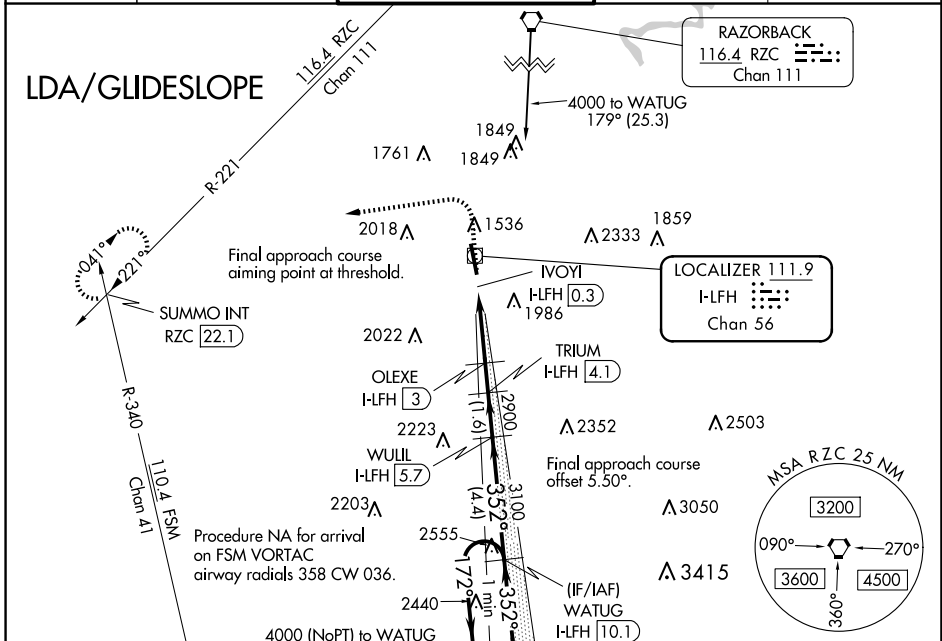
LOC/DME I-LFH 111.9 Chan 56	APP CRS 352°	Rwy Idg TDZE 1241 Apt Elev 1252	6005
--	------------------------	---	-------------

LDA RWY 34

DRAKE FLD (FYV)

DME required for procedure entry.		ODALS	MISSED APPROACH: Climb to 2200 then climbing left turn to 4000 on heading 260° and on RZC VORTAC R-221 to SUMMO INT/ RZC 22.1 DME and hold.
<p>⚠ Inop table does not apply. Circling NA east of Rwy 16-34. Rwy 34 helicopter visibility reduction below 3/4 SM NA.</p>			

ATIS 119.575	RAZORBACK APP CON* 121.0 244.575	DRAKE TOWER* 128.0(CTAF) 371.9	GND CON 121.8	UNICOM 122.95
------------------------	--	--	-------------------------	-------------------------



SC-1, 11 JUN 2026 to 09 JUL 2026

SC-1, 11 JUN 2026 to 09 JUL 2026

2200	4000	RZC R-221	SUMMO INT	Use I-FLH DME when on the localizer course.	WATUG I-FLH 10.1
↑	hdg 260°				
*LDA only.					One Minute Holding Pattern.
					352°
					172°
					4000
					3100
					2900
					2900
					2500
					OLEXE I-FLH 3
					IVOIY I-FLH 0.3
					TRIUIM I-FLH 4.1
					WUULL I-FLH 5.7
					GS 3.50°
					TCH 57
					0.4
					2.8 NM
					1.1 NM
					1.6 NM
					4.4 NM
CATEGORY	A	B	C	D	
S-LDA/GS 34		1593-1 1/4	352 (400-1 1/4)	NA	
S-LDA 34	2020-1 1/4	2020-1 1/2	2020-2 1/2	NA	
	779 (800-1 1/4)	779 (800-1 1/2)	779 (800-2 1/2)		
CIRCLING	2020-1 1/4	2020-1 1/2	2320-3	NA	
	768 (800-1 1/4)	768 (800-1 1/2)	1068 (1100-3)		