

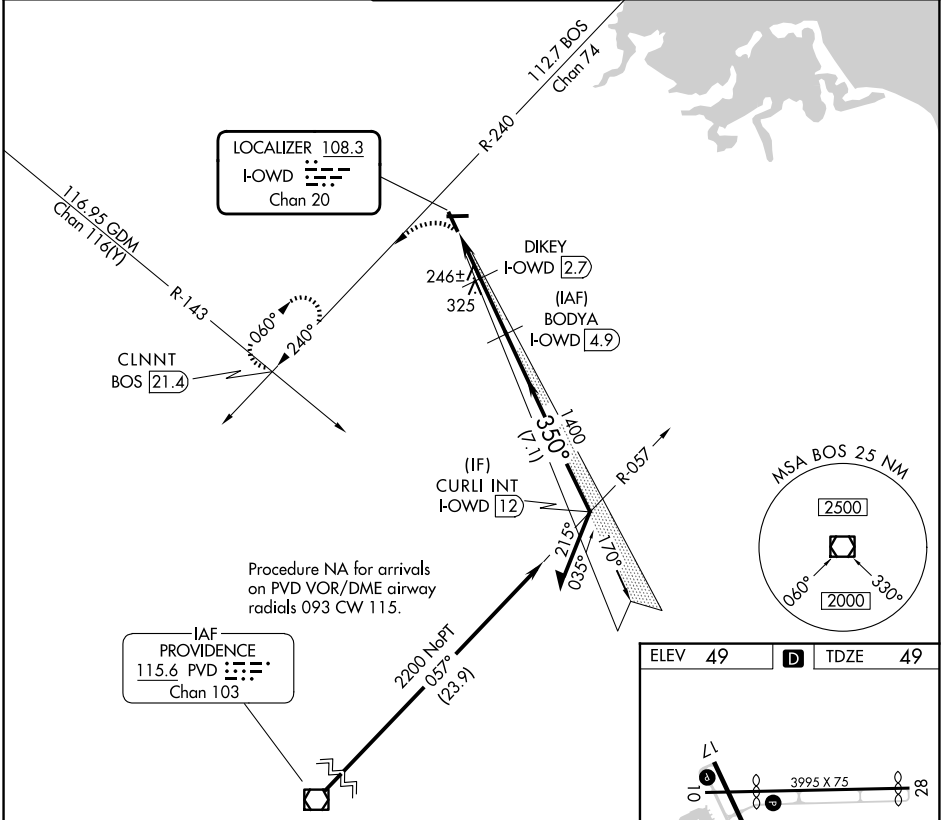
LOC/DME I-OWD <b>108.3</b> Chan 20	APP CRS <b>350°</b>	Rwy Ldg <b>4007</b> TDZE <b>49</b> Apt Elev <b>49</b>
--	------------------------	---

# LOC RWY 35

NORWOOD MEML (OWD)

DME required.	MALSF	MISSED APPROACH: Climbing left turn to 2000 on heading 200 and on BOS VOR/DME R-240 to CLNNT INT/ BOS VOR/DME 21.4 DME and hold.
Helicopter visibility reduction below 3/4 SM NA. Circling NA at night. For inop ALS, increase S-35 Cat C/D visibility to 1 3/8 SM. 		

ATIS <b>119.95</b>	BOSTON APP CON <b>124.1 263.1</b>	NORWOOD TOWER ★ <b>126.0 (CTAF) 0</b>	GND CON <b>121.8</b>	CLNC DEL <b>121.8</b>
-----------------------	--------------------------------------	--	-------------------------	--------------------------



NE-1, 11 JUN 2026 to 09 JUL 2026

NE-1, 11 JUN 2026 to 09 JUL 2026

2000 hdg 200	BOS R-240	CLNNT INT	BODYA I-OWD 4.9	Remain within 10 NM
		DIKEY I-OWD 2.7	2100	170° → 2100
		I-OWD 0.8	I-OWD 2.1	350° → 1400
	1.3 NM	0.6 NM	2.2 NM	≤ 3.00° TCH 40
CATEGORY	A	B	C	D
S-LOC 35	500-3/4	451 (500-3/4)	500-1	451 (500-1)
CIRCLING	600-1 551 (600-1)	700-1 651 (700-1)	1220-3	1171 (1200-3)

